



FIRST RELEASE



You are required to specify a data source when allowed in your product or application.

YEAR VIII

SARAJEVO, 25/08/2021

NUMBER 2

BUSINESS STATISTICS

DISTRIBUTIVE TRADE TURNOVER INDICES IN BIH, II QUARTER 2021

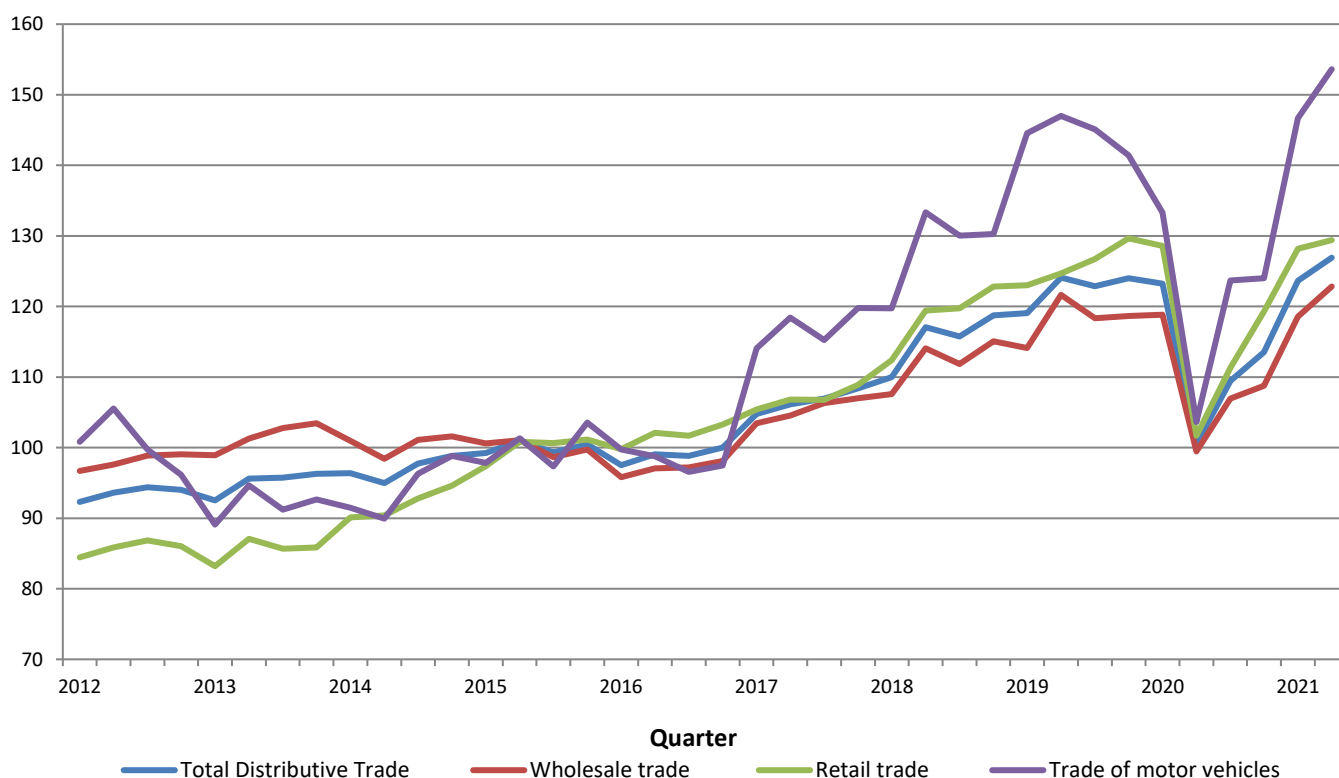
The total seasonally adjusted distributive trade turnover in the second quarter of 2021 in BiH increased by 2.6% compared with the first quarter of 2020. An increase in turnover was recorded in wholesale and retail trade of motor vehicles and motorcycles wholesale trade by 4.7%, in wholesale trade by 3.6% and retail trade by 1.0%.

The largest increase in turnover was realized in the activity of Sale, maintenance and repair of motorcycles and related parts and accessories in the amount of 30.6%, while the largest decrease in turnover was realized in the activity of Wholesale on a fee or contract basis in the amount of 5.9%.

Indices of distributive trade turnover in BiH in the second quarter of 2021 increased by 26.9% compared to the base (2015) year. The increase in turnover was recorded in wholesale and retail trade of motor vehicles and motorcycles by 53.6%, in retail trade by 29.4%, while in wholesale trade the increase of turnover growth was 22.8% compared to the base (2015) year.

The data are seasonally adjusted.

Indices of Distributive Trade Turnover, seasonally adjusted series BiH, 2015=100

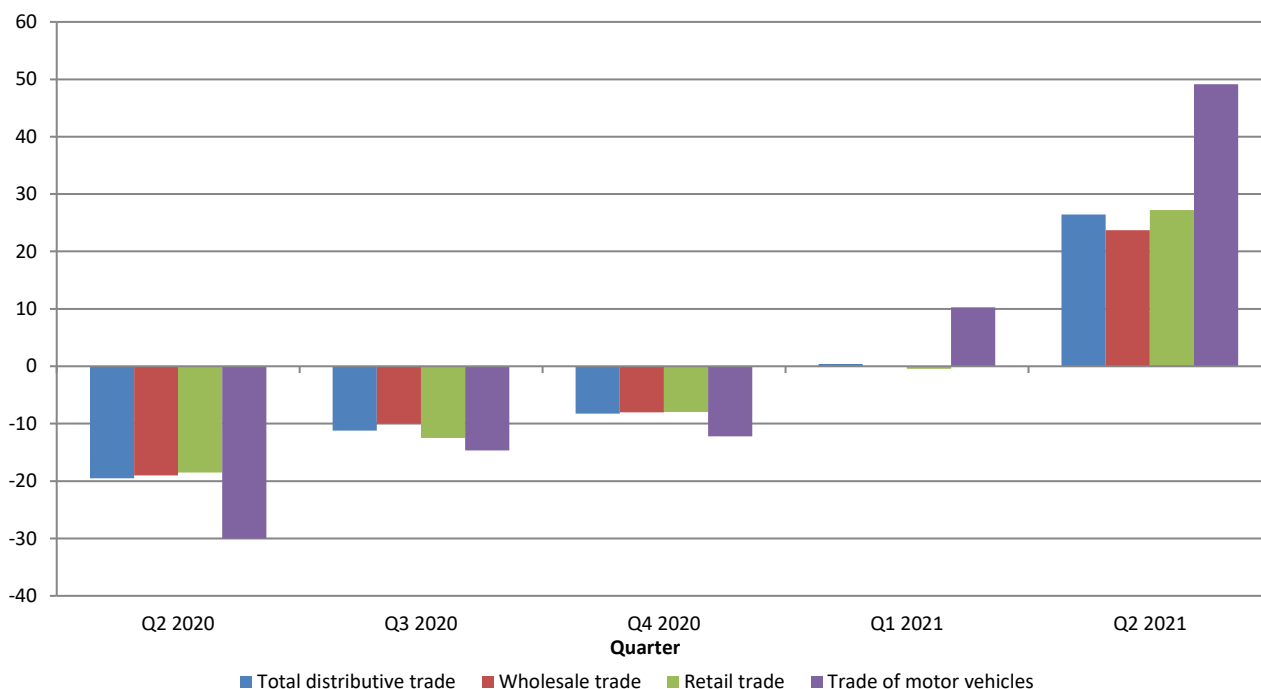


Total distributive trade turnover in BiH, working day adjusted, in the second quarter of 2021 recorded an increase of 26.4% compared with the same quarter of the previous year. The turnover increased in wholesale and retail trade of motor vehicles and motorcycles by 49.2%, in wholesale trade by 23.7% and in retail trade by 27.2%.

The highest increase in turnover was recorded in Sales, maintenance and repair of motorcycles and related parts and accessories by 168.2%, while the largest decrease was recorded in the Sales of motor vehicles by 63.1%.

Data are working day adjusted.

Annual growth rates in Distributive Trade, working day adjusted series



In the structure of total trade turnover (gross, non-adjusted data) in the second quarter of 2021, the greatest share is realized in the wholesale trade (55.2%), followed by retail trade (38.4%) and trade and maintenance of motor vehicles and motorcycles (6.4%).

Table 1: Basic value indicators of distributive trade turnover in BiH

Name of activity- KD BiH 2010	seasonally adjusted data				working day adjusted data		
	<u>II 2021</u>	<u>I 2021</u>	<u>II 2021</u>	<u>II 2021</u>	<u>II 2021</u>	<u>I 2021</u>	<u>IV 2020</u>
	I 2021	IV 2020	ø2020	ø2015	II 2020	I 2020	IV 2019
Total distributive trade	2.6	8.9	13.6	26.9	26.4	0.4	-8.3
Wholesale and retail trade of motor vehicles and motorcycles	4.7	18.3	26.8	53.6	49.2	10.3	-12.2
Wholesale trade	3.6	9.0	13.2	22.8	23.7	-0.1	-8.0
Retail trade	1.0	7.4	12.3	29.4	27.2	-0.4	-8.0

**data for the previous period are revised*

Table 2: Quarterly growth rates of distributive trade turnover calculated from value indices

Code KD BiH 2010	Activity- KD BiH 2010	<u>II 2020</u> I 2020	<u>III 2020</u> II 2020	<u>IV 2020</u> III 2020	<u>I 2021</u> IV 2020	<u>II 2021</u> I 2021
G	Wholesale and retail trade, repair of motor vehicles and motorcycles	-18.4	8.9	3.7	8.9	2.6
45	Wholesale and retail trade and repair of motor vehicles and motorcycles	-22.3	19.4	0.3	18.3	4.7
45.1	Sale of motor vehicles	-26.1	28.3	-0.4	20.0	6.3
45.2	Maintenance and repair of motor vehicles	-28.5	25.9	-1.8	0.5	9.3
45.3	Sale of motor vehicle parts and accessories	-16.2	7.9	1.3	19.4	1.6
45.4	Sale, maintenance and repair of motorcycles and related parts and accessories	-3.3	42.3	23.1	19.3	30.6
46	Wholesale trade, except of motor vehicles and motorcycles	-16.3	7.5	1.7	9.0	3.6
46.1	Wholesale on a fee or contract basis	-15.7	17.1	-1.6	26.1	-5.9
46.2	Wholesale of agricultural raw materials and live animals	5.4	3.0	3.3	0.7	-0.7
46.3	Wholesale of food, beverages and tobacco	-15.4	6.3	-2.0	7.1	3.1
46.4	Wholesale of household goods	-13.9	10.0	5.4	-0.1	7.7
46.5	Wholesale of information and communication equipment	2.3	7.0	0.1	-5.2	0.1
46.6	Wholesale of other machinery, equipment and supplies	-12.4	8.5	5.1	3.0	-3.1
46.7	Other specialised wholesale	-21.1	6.8	3.5	16.5	4.5
46.9	Non-specialised wholesale trade	-16.5	7.8	-0.4	8.8	2.4
47	Retail trade, except of motor vehicles and motorcycles	-20.9	9.4	7.2	7.4	1.0
47.3	Retail sale of automotive fuel in specialised stores	-29.6	11.0	8.2	19.1	4.3
47-47.3	Retail trade, excluding retail trade of automotive fuel	-18.2	9.0	6.9	4.2	-0.1

* seasonally adjusted data

*data for the previous period are revised

Table 3: Annual growth rates of distributive trade turnover calculated from value indices

Code KD BiH 2010	Activity- KD BiH 2010	<u>III 2020</u> III 2019	<u>IV 2020</u> IV 2019	<u>I 2021</u> I 2020	<u>II 2021</u> II 2020	<u>I-II 2021</u> I-II 2020
G	Wholesale and retail trade, repair of motor vehicles and motorcycles	-11.2	-8.3	0.4	26.4	13.0
45	Wholesale and retail trade and repair of motor vehicles and motorcycles	-14.7	-12.2	10.3	49.2	28.8
45.1	Sale of motor vehicles	-17.0	-14.2	13.4	63.1	36.4
45.2	Maintenance and repair of motor vehicles	-14.6	-14.6	-11.1	35.6	10.7
45.3	Sale of motor vehicle parts and accessories	-11.9	-9.9	9.4	32.6	20.9
45.4	Sale, maintenance and repair of motorcycles and related parts and accessories	104.0	105.0	99.8	168.2	140.2
46	Wholesale trade, except of motor vehicles and motorcycles	-10.0	-8.0	-0.1	23.7	11.6
46.1	Wholesale on a fee or contract basis	-2.7	-6.2	22.5	36.6	29.9
46.2	Wholesale of agricultural raw materials and live animals	17.8	20.8	12.5	5.1	8.8
46.3	Wholesale of food, beverages and tobacco	-7.5	-7.7	-5.6	15.0	4.8
46.4	Wholesale of household goods	-2.2	4.7	-0.6	25.4	11.3
46.5	Wholesale of information and communication equipment	23.6	10.7	3.1	1.3	2.2
46.6	Wholesale of other machinery, equipment and supplies	-21.8	-16.0	3.5	13.2	8.4
46.7	Other specialised wholesale	-18.2	-15.3	2.0	34.7	18.1
46.9	Non-specialised wholesale trade	-7.3	-9.8	-2.0	19.6	8.5
47	Retail trade, except of motor vehicles and motorcycles	-12.5	-8.0	-0.4	27.2	12.8
47.3	Retail sale of automotive fuel in specialised stores	-29.8	-22.8	0.7	49.1	22.8
47-47.3	Retail trade, excluding retail trade of automotive fuel	-5.7	-2.7	-0.8	21.3	10.0

working day adjusted data

**data for the previous period are revised*

Table 4: Quarterly value indices of distributive trade turnover, 2015=100

Code KD BiH 2010	Activity- KD BiH 2010	2020			2021	
		II	III	IV	I	II
G	Wholesale and retail trade, repair of motor vehicles and motorcycles	100.5	109.4	113.5	123.6	126.9
45	Wholesale and retail trade and repair of motor vehicles and motorcycles	103.6	123.7	124.0	146.7	153.6
45.1	Sale of motor vehicles	105.4	135.3	134.7	161.8	171.9
45.2	Maintenance and repair of motor vehicles	91.3	115.0	112.9	113.4	124.0
45.3	Sale of motor vehicle parts and accessories	103.8	112.0	113.4	135.4	137.6
45.4	Sale, maintenance and repair of motorcycles and related parts and accessories	143.4	204.0	251.2	299.6	391.2
46	Wholesale trade, except of motor vehicles and motorcycles	99.5	106.9	108.8	118.6	122.8
46.1	Wholesale on a fee or contract basis	77.3	90.6	89.1	112.4	105.7
46.2	Wholesale of agricultural raw materials and live animals	123.5	127.2	131.3	132.3	131.4
46.3	Wholesale of food, beverages and tobacco	96.4	102.5	100.4	107.5	110.9
46.4	Wholesale of household goods	109.2	120.1	126.6	126.4	136.1
46.5	Wholesale of information and communication equipment	130.0	139.1	139.2	132.0	132.1
46.6	Wholesale of other machinery, equipment and supplies	154.5	167.6	176.1	181.3	175.6
46.7	Other specialised wholesale	96.7	103.4	107.0	124.6	130.3
46.9	Non-specialised wholesale trade	89.3	96.3	95.9	104.4	106.9
47	Retail trade, except of motor vehicles and motorcycles	101.7	111.3	119.3	128.2	129.4
47.3	Retail sale of automotive fuel in specialised stores	85.0	94.4	102.1	121.6	126.9
47-47.3	Retail trade, excluding retail trade of automotive fuel	107.4	117.1	125.2	130.4	130.3

* seasonally adjusted data

*data for the previous period are revised

Table 5: Distributive trade turnover indices - gross (non-adjusted) series

Code KD BiH 2010	Activity- KD BiH 2010	stope promjene			indeksi prometa 2015=100				
		II 2021 I 2021	II 2021 II 2020	II 2021 ø2020	II 2020	III 2020	IV 2020	I 2021	II 2021
		G	Wholesale and retail trade, repair of motor vehicles and motorcycles	19.1	26.2	15.2	101.3	118.4	117.7
45	Wholesale and retail trade and repair of motor vehicles and motorcycles	23.3	49.4	31.1	105.7	126.1	133.6	128.0	157.8
45.1	Sale of motor vehicles	23.9	63.1	44.4	113.9	136.9	131.7	149.9	185.8
45.2	Maintenance and repair of motor vehicles	33.5	35.6	11.7	90.7	120.9	125.3	92.2	123.1
45.3	Sale of motor vehicle parts and accessories	19.2	32.6	16.3	99.0	114.3	137.2	110.0	131.2
45.4	Sale, maintenance and repair of motorcycles and related parts and accessories	137.1	220.8	210.3	167.1	254.8	167.9	226.1	536.1
46	Wholesale trade, except of motor vehicles and motorcycles	19.0	23.7	14.3	99.8	115.0	113.5	103.7	123.5
46.1	Wholesale on a fee or contract basis	22.8	36.6	27.5	81.4	100.8	92.8	90.6	111.3
46.2	Wholesale of agricultural raw materials and live animals	-3.8	5.1	10.5	129.9	118.9	119.1	142.0	136.5
46.3	Wholesale of food, beverages and tobacco	23.2	15.0	9.7	98.0	113.2	102.8	91.5	112.7
46.4	Wholesale of household goods	6.4	25.4	5.5	102.0	122.1	140.0	120.2	127.9
46.5	Wholesale of information and communication equipment	2.7	1.3	-10.7	118.2	137.4	167.5	116.6	119.7
46.6	Wholesale of other machinery, equipment and supplies	13.0	13.2	2.1	152.6	173.7	202.3	152.8	172.6
46.7	Other specialised wholesale	27.6	34.7	26.6	99.9	114.1	107.8	105.5	134.6
46.9	Non-specialised wholesale trade	15.2	19.6	10.5	89.6	103.5	99.8	93.0	107.2
47	Retail trade, except of motor vehicles and motorcycles	18.4	26.7	14.1	103.0	122.4	121.8	110.2	130.5
47.3	Retail sale of automotive fuel in specialised stores	24.4	49.1	26.8	84.5	107.2	105.2	101.3	126.1
47-47.3	Retail trade, excluding retail trade of automotive fuel	16.6	20.7	10.5	109.4	127.7	127.6	113.2	132.0

*data for the previous period are revised

Appendix: Extract from Classification of Activities - KD BiH 2010.

Code KD BiH 2010	Activity - KD BiH 2010
G	Wholesale and retail trade; repair of motor vehicles and motorcycles
45	Wholesale and retail trade and repair of motor vehicles and motorcycles
45.1	Sale of motor vehicles
45.2	Maintenance and repair of motor vehicles
45.3	Sale of motor vehicle parts and accessories
45.4	Sale, maintenance and repair of motorcycles and related parts and accessories
46	Wholesale trade, except of motor vehicles and motorcycles
46.1	Wholesale on a fee or contract basis
46.2	Wholesale of agricultural raw materials and live animals
46.3	Wholesale of food, beverages and tobacco
46.4	Wholesale of household goods
46.5	Wholesale of information and communication equipment
46.6	Wholesale of other machinery, equipment and supplies
46.7	Other specialised wholesale
46.9	Non-specialised wholesale trade
47	Retail trade, except of motor vehicles and motorcycles
47.1	Retail sale in non-specialised stores
47.2	Retail sale of food, beverages and tobacco in specialised stores
47.3	Retail sale of automotive fuel in specialised stores
47.4	Retail sale of information and communication equipment in specialised stores
47.5	Retail sale of other household equipment in specialised stores
47.6	Retail sale of cultural and recreation goods in specialised stores
47.7	Retail sale of other goods in specialised stores
47.8	Retail sale via stalls and markets
47.9	Retail trade not in stores, stalls or markets

METHODOLOGY NOTES

Aim of the survey

Services statistics take an important place in the national economy and have a major role in recent decades. The reason for this is the large number of business entities engaged in services, especially in trade activities, and the fact they have a significant contribution in realized turnover of BiH.

Primary goal of distributive trade statistics is to provide timely information on change of level of realized turnover and other relevant indicators. The distributive trade turnover index is one of the key indicators of economic activity in the country, which helps government bodies, and private sector enterprises in the decision-making process. It is also applied for the estimation of trade sector output, household consumption, as well as in the calculation of national accounts. Survey methodology is completely harmonized with the one prescribed by Council Regulation (EC) No.1165/98 concerning short-term statistics from the 1998 (Annex D) and its amendments (hereinafter EU STS regulation) and with Eurostat recommendations for this statistical area.

Coverage

The survey comprises business entities /legal units which are, by the main activity, registered within trade activity (section G- KD BiH 2010), and in minor extent businesses which are, according to their main activity, classified in other activities (industry, construction, hotels and restaurants etc.), but also perform trade activities. For the purpose of the survey, Classification of Activities in Bosnia and Herzegovina - KD BiH 2010 was used, and it is fully compliant with the European Classification of Economic Activities - NACE Rev. 2. The survey covers the entire territory of Bosnia and Herzegovina. Entrepreneurs are not included.

Sample design

In conducting survey on distributive trade in BiH the combined method of full coverage and stratified random sampling is used. The sample is divided into strata according to class of financial data (financial report of the previous year) and the activity of business entity (divisions 45, 46 and 47-KD BiH 2010). As an additional stratification variable, the number of employees is used. The chosen sample on distributive trade in 2021 is representative at the level of Bosnia and Herzegovina and at the level of the Federation of BiH, Republic of Srpska and District Brčko.

Data collection and processing

The three statistical institutions in BiH participate in conducting the survey. The main observation variable is the quarterly turnover of business entity, excluding VAT, which is in accordance with EU-STS regulation separately stated. Data collected from the reporting units, using the form K KPS TRG 02, is the basis for the evaluation data for the total population. Aggregation of turnover at higher levels (division, section or special aggregates) of activity is carried out prior to the compilation of indices.

Index compilation

Distributive trade indices are calculated compared with the new base year (2015), from the first quarter 2018, which is revised every five years according to the EU-STS regulations. EU Regulation (EC) No 472/2008 prescribes the application of 2015 as a base year, starting from January 2018 in all EU member states. Value index of distributive trade is expressed in current prices (unadjusted for price change).

Seasonal and working day adjustment of index

The statistical institutions in BiH, taking into account data dissemination in the EU, are publishing indices in the following forms:

- original (unadjusted) indices,
- seasonally adjusted indices – deseasoned indices (SA – seasonally adjusted) and
- calendar adjusted indices (WDA- working-day adjusted)

Since the seasonally and calendar adjusted indices are far more significant and representative for the users of statistical data, they are listed in tabular form.

Seasonal adjustment means that the data are adjusted for seasonal influences and calendar days. Quarterly indices and growth rates are, according to Eurostat's recommendations, presented and interpreted in seasonally adjusted form.

Calendar adjustment implies that the data are adjusted for the impact of calendar and workdays. The data that are compared with the data from the same period of the previous year are presented and interpreted in the calendar-adjusted form of an index or growth rate. When these calendar effects significantly affect the observed time series, it is necessary to remove them.

Calendar and seasonal adjustment are performed in the JDemetra+ application (version 2.2.1) using the TRAMO-SEATS method in the series of monthly data and in accordance with the Eurostat guidelines.

Because of the characteristics of the applied method of adjustment, adding new quarterly observations in the series may lead to a certain changes to the earlier, already published seasonally and calendar-adjusted index series.

Data dissemination

The results of the survey are expressed in the form of indices and growth rates and since 2014 are published on a regular quarterly basis in the form of press releases on the website of the Agency for Statistics of BiH (www.bhas.gov.ba). The presentation and interpretation of the index are completely in line with those prescribed by EU-STS regulation allowing national and international users to compare the BiH distributive trade index with indices of other countries.

Data revision

Regular press releases on distributive trade are published in the quarterly dynamics and contain preliminary data. Data revision implies that the data for the previous quarter (t-1) are revised in accordance with new information, and it is possible that the data published after revision differ from previously published, preliminary data. In the press release is clearly stated on which data are used so that users of statistical data can properly interpret them. For any change of the data and the reasons for doing that, users will be informed in an appropriate and transparent manner, in regular quarterly press releases and other publications for the public as well as on the website of the Agency for Statistics of BiH.

Definitions

Turnover is the total invoiced amount that a business entity invoice to third parties for goods sold or service provided in the retail trade during the reference period, and it corresponds to the market value. Includes costs associated with the sale, such as transportation, packaging, etc. that are transferred to the customer, even if these amounts are stated separately on invoices. Value Added Tax (VAT) is excluded from the turnover.

Distributive trade consists of all types of trade activities, from supplying goods from the producer to distributing them to the final consumer. It comprises wholesale trade on own account, wholesale on a fee or contract basis, retail trade and repair of motor vehicles and motorcycles and personal and household goods.

Wholesale trade is an activity of sale and resale of goods to industrial, trading and professional users and organisations as well as to other business entities engaged in wholesale and retail trade. It also includes transit goods trade (sales of goods, which is by a vendor's order directly delivered to a customer without being previously stored at the salesman's).

Retail trade includes the sale of goods to final consumers or households (for personal consumption or for using in household).

Abbreviations

EU- European Union

Eurostat- Statistical Office of the European Communities

FIS- Federal Institute of Statistics of the Federation of BiH

KD BiH 2010- Classification of activities of Bosnia and Herzegovina 2010

NACE Rev.2- European Classification of economic Activities

RSIS- Republika Srpska Institute of Statistics

SBR- Statistical Business Register

- no occurrence

Published by the Agency for Statistics of the Bosnia and Herzegovina, 71000 Sarajevo, Zelenih beretki 26

Phone: +387 (33) 911 911 | Telefax: +387 (33) 220 622

E-mail: bhas@bhas.gov.ba | Web site: www.bhas.gov.ba

Responsible persons:

Velimir Jukić, Assistant Director of Business Statistics

Vesna Čužić, Director

Prepared by: Alen Bajramović



Please consider the environment before printing this document.