



PRIOPĆENJE

FIRST RELEASE



Obvezni ste da prilikom dozvoljenih radnji, u svom proizvodu ili aplikaciji navedete izvor podataka.
You are required to specify a data source when allowed in your product or application.

GODINA/YEAR XI

SARAJEVO, 27.03.2023.

BROJ/NUMBER 01A

POSLOVNE STATISTIKE / BUSINESS STATISTICS

MJESEČNI INDEKSI INDUSTRIJSKE PROIZVODNJE ZA BOSNU I HERCEGOVINU SIJEČANJ 2022 – SIJEČANJ 2023¹⁾ MONTHLY INDICES OF INDUSTRIAL PRODUCTION FOR BOSNIA AND HERZEGOVINA JANUARY 2022 – JANUARY 2023¹⁾

Agencija za statistiku BiH, pored redovnog mjesečnog priopćenja o indeksu fizičkog obujma industrijske proizvodnje, počela je redovito objavljivanje serije mjesečnih indeksa koji obuhvaćaju trinaest posljednjih mjeseci obračunatih prema baznoj, 2015. godini.

Rezultati indeksa industrijske proizvodnje prikazuju se u četiri oblika:

- Izvorni indeksi obujma industrijske proizvodnje
- Desezonirani indeksi obujma industrijske proizvodnje
- Kalendarski prilagođeni indeksi obujma industrijske proizvodnje
- Trend serija indeksa obujma industrijske proizvodnje

Prikazane serije obuhvaćaju izvještajni mjesec tekuće godine i dvanaest mjeseci koji mu prethode, uvijek uključujući isti mjesec prethodne godine.

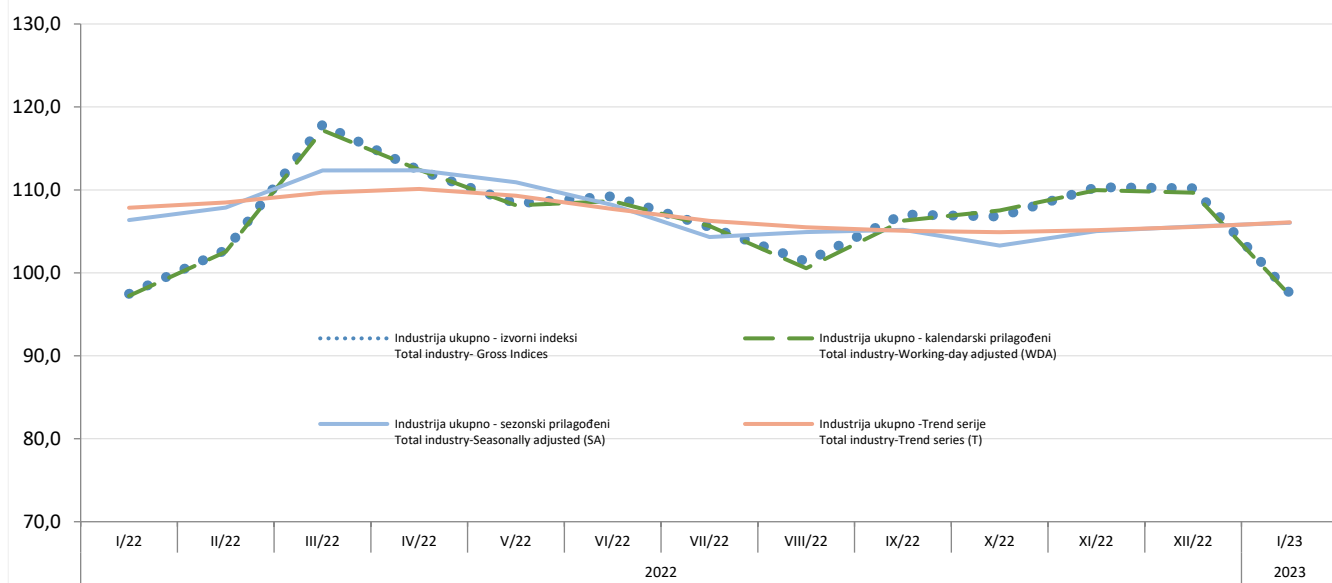
Agency for Statistics of BiH, next to regular monthly release on the volume index of industrial production, started with the regular publication of monthly series covering the last thirteen months calculated according to the base, 2015th year.

Results of the indices of industrial production are presented in four forms:

- Gross indices of industrial production
- Seasonally adjusted indices of industrial production
- Working-day adjusted indices of industrial production
- Trend series of industrial production indices

Presented series include the reporting month of the current year and the twelve months preceding it, always including the same month last year.

Grafik 1. Mjesečna serija indeksa industrija ukupno - izvorni, kolendarski i sezonski prilagođeni indeksi: siječanj 2022 - siječanj 2023 (2015=100)
Graph 1. Monthly series of industrial indices for total - Gross, Working-day and Seasonally Adjusted indices: January 2022 - January 2023 (2015=100)



¹ Revidirani podaci
Revised data

TABLICA 1. MJESEČNA SERIJA INDEKSA INDUSTRIJSKE PROIZVODNJE - IZVORNI INDEKSI
TABLE 1. MONTHLY SERIES OF INDUSTRIAL PRODUCTION INDICES - GROSS INDICES

ϕ 2015 = 100

| KD BiH 2010: GIG, Područja i Oblasti | IZVORNI INDEKSI / Gross indices | | | | | | | | | | | | | NACE Rev. 2: MIGs, Sections and Divisions |
|--|---------------------------------|-------|--------|-------|-------|-------|--------|---------|-------|-------|-------|--------|-------|--|
| | I/22 | II/22 | III/22 | IV/22 | V/22 | VI/22 | VII/22 | VIII/22 | IX/22 | X/22 | XI/22 | XII/22 | I/23 | |
| Ukupno | 97.5 | 102.8 | 117.9 | 112.4 | 108.4 | 109.2 | 105.5 | 101.4 | 107.0 | 106.8 | 110.3 | 110.2 | 97.6 | Total |
| AI | 89.9 | 102.7 | 121.2 | 115.6 | 116.4 | 117.9 | 110.9 | 108.2 | 119.0 | 115.2 | 114.4 | 106.6 | 93.3 | AI |
| AE | 111.7 | 97.4 | 103.1 | 99.6 | 92.2 | 85.2 | 88.0 | 88.6 | 75.5 | 84.2 | 93.8 | 101.3 | 101.0 | AE |
| BB | 115.4 | 138.3 | 166.0 | 155.9 | 147.7 | 153.2 | 144.4 | 134.8 | 148.1 | 153.4 | 158.4 | 144.1 | 124.8 | BB |
| CD | 93.7 | 103.9 | 114.9 | 101.6 | 91.7 | 100.3 | 85.2 | 75.4 | 105.5 | 100.4 | 102.2 | 104.1 | 95.1 | CD |
| CN | 83.0 | 91.1 | 107.2 | 103.6 | 100.2 | 105.6 | 104.1 | 96.0 | 106.8 | 99.9 | 102.3 | 110.5 | 84.8 | CN |
| Područje B | 82.3 | 89.0 | 103.7 | 101.6 | 102.6 | 97.6 | 96.9 | 108.4 | 92.5 | 97.5 | 99.0 | 88.5 | 79.0 | Section B |
| 05 | 96.0 | 92.4 | 105.2 | 102.8 | 105.0 | 96.0 | 96.4 | 105.6 | 86.2 | 94.2 | 95.6 | 86.5 | 80.5 | 05 |
| 07 | 32.6 | 76.8 | 87.2 | 77.2 | 75.0 | 79.0 | 72.2 | 91.4 | 72.5 | 78.8 | 71.3 | 49.2 | 50.8 | 07 |
| 08 | 72.1 | 82.4 | 113.6 | 125.9 | 124.7 | 129.9 | 131.9 | 144.3 | 154.3 | 139.9 | 155.2 | 154.9 | 110.4 | 08 |
| Područje C | 91.4 | 102.8 | 120.8 | 114.6 | 112.0 | 115.7 | 109.5 | 102.8 | 115.8 | 112.4 | 113.5 | 111.1 | 93.8 | Section C |
| 10 | 95.5 | 100.6 | 119.4 | 110.0 | 106.7 | 109.0 | 113.6 | 121.9 | 117.6 | 118.0 | 121.0 | 129.0 | 99.4 | 10 |
| 11 | 63.8 | 63.9 | 91.1 | 91.4 | 101.4 | 116.1 | 117.7 | 129.3 | 109.3 | 72.4 | 83.5 | 89.0 | 62.8 | 11 |
| 12 | 4.0 | 5.8 | 12.0 | 0.0 | 0.0 | 0.0 | 0.0 | 1.4 | 0.0 | 0.0 | 0.0 | 0.0 | 0.0 | 12 |
| 13 | 56.7 | 59.5 | 60.9 | 54.7 | 49.9 | 53.4 | 39.8 | 23.6 | 42.4 | 37.7 | 34.2 | 29.4 | 32.4 | 13 |
| 14 | 80.8 | 90.8 | 96.6 | 98.6 | 96.9 | 101.6 | 88.2 | 60.4 | 87.0 | 89.8 | 94.1 | 102.0 | 75.7 | 14 |
| 15 | 76.0 | 83.5 | 93.7 | 94.9 | 79.8 | 91.4 | 86.5 | 53.3 | 84.6 | 83.7 | 84.8 | 78.8 | 75.6 | 15 |
| 16 | 65.0 | 86.8 | 95.2 | 93.1 | 97.2 | 115.2 | 92.7 | 83.7 | 94.6 | 94.2 | 93.0 | 86.2 | 66.4 | 16 |
| 17 | 114.8 | 106.1 | 126.9 | 107.7 | 119.3 | 126.3 | 107.2 | 112.9 | 121.6 | 118.5 | 97.7 | 116.1 | 110.1 | 17 |
| 18 | 89.8 | 108.4 | 135.8 | 119.2 | 137.2 | 126.0 | 128.4 | 154.6 | 151.4 | 135.9 | 118.7 | 143.5 | 99.2 | 18 |
| 19 | 34.5 | 31.6 | 35.3 | 34.7 | 35.0 | 33.2 | 32.7 | 30.4 | 27.9 | 28.7 | 25.9 | 26.8 | 28.6 | 19 |
| 20 | 114.6 | 119.2 | 139.4 | 129.1 | 123.7 | 130.8 | 121.7 | 124.3 | 131.8 | 133.8 | 125.9 | 130.1 | 116.4 | 20 |
| 21 | 43.2 | 92.2 | 122.3 | 123.4 | 98.5 | 109.3 | 126.9 | 76.7 | 159.7 | 139.2 | 149.4 | 198.5 | 74.9 | 21 |
| 22 | 130.4 | 148.4 | 169.9 | 174.2 | 170.6 | 175.8 | 168.4 | 154.2 | 184.3 | 167.3 | 173.0 | 160.0 | 130.1 | 22 |
| 23 | 69.3 | 81.5 | 107.4 | 122.8 | 123.4 | 125.8 | 114.4 | 115.4 | 132.4 | 139.8 | 113.4 | 97.8 | 67.0 | 23 |
| 24 | 94.1 | 88.6 | 100.6 | 91.0 | 97.9 | 71.5 | 92.6 | 82.4 | 82.4 | 71.9 | 74.7 | 71.4 | 78.2 | 24 |
| 25 | 118.7 | 148.8 | 177.1 | 160.9 | 158.3 | 168.1 | 152.7 | 147.7 | 159.3 | 158.8 | 176.0 | 165.1 | 126.0 | 25 |
| 26 | 272.7 | 341.1 | 502.0 | 412.6 | 284.2 | 338.1 | 271.3 | 281.8 | 433.5 | 398.8 | 326.2 | 334.8 | 185.7 | 26 |
| 27 | 130.0 | 148.6 | 172.9 | 151.5 | 160.4 | 161.6 | 156.3 | 156.6 | 169.1 | 161.7 | 154.1 | 146.3 | 136.0 | 27 |
| 28 | 127.7 | 133.5 | 149.4 | 154.9 | 144.0 | 141.0 | 138.6 | 118.0 | 139.5 | 146.2 | 146.3 | 110.4 | 156.1 | 28 |
| 29 | 78.8 | 92.9 | 122.7 | 119.8 | 102.2 | 89.2 | 95.5 | 87.6 | 103.7 | 108.0 | 121.2 | 80.4 | 98.2 | 29 |
| 30 | 50.8 | 47.8 | 34.9 | 43.0 | 8.1 | 25.2 | 17.5 | 8.3 | 32.8 | 24.8 | 37.4 | 57.1 | 42.7 | 30 |
| 31 | 94.1 | 103.6 | 115.4 | 101.6 | 92.3 | 100.1 | 85.1 | 74.4 | 105.9 | 99.8 | 101.8 | 104.2 | 94.9 | 31 |
| 32 | 172.6 | 177.9 | 237.1 | 228.8 | 225.3 | 198.4 | 171.7 | 148.2 | 171.7 | 161.1 | 168.7 | 211.3 | 224.3 | 32 |
| 33 | 72.9 | 89.2 | 107.7 | 99.2 | 95.6 | 99.0 | 94.6 | 99.8 | 101.2 | 112.8 | 101.8 | 112.2 | 100.1 | 33 |
| Područje D | 128.1 | 108.5 | 112.0 | 107.7 | 96.0 | 89.0 | 92.9 | 90.8 | 78.5 | 88.5 | 102.3 | 116.5 | 117.6 | Section D |
| 35 | 128.1 | 108.5 | 112.0 | 107.7 | 96.0 | 89.0 | 92.9 | 90.8 | 78.5 | 88.5 | 102.3 | 116.5 | 117.6 | 35 |

TABLICA 2. MJESEČNA SERIJA INDEKSA INDUSTRIJSKE PROIZVODNJE - KALENDARSKI PRILAGOĐENI INDEKSI
TABLE 2. MONTHLY SERIES OF INDUSTRIAL PRODUCTION INDICES - WORKING-DAY ADJUSTED INDICES

φ 2015 = 100

| KD BiH 2010: GIG, Područja i Oblasti | KALENDARSKI PRILAGOĐENI INDEKSI / Working-day adjusted indices | | | | | | | | | | | | | NACE Rev. 2: MIGs, Sections and Divisions |
|---|--|-------|--------|-------|-------|-------|--------|---------|-------|-------|-------|--------|-------|--|
| | I/22 | II/22 | III/22 | IV/22 | V/22 | VI/22 | VII/22 | VIII/22 | IX/22 | X/22 | XI/22 | XII/22 | I/23 | |
| Ukupno | 97.2 | 102.5 | 117.2 | 112.4 | 108.1 | 108.6 | 105.6 | 100.5 | 106.3 | 107.5 | 110.0 | 109.7 | 97.3 | Total |
| AI | 89.5 | 103.5 | 120.7 | 116.3 | 116.3 | 117.5 | 112.0 | 107.8 | 118.7 | 116.5 | 114.5 | 106.7 | 92.5 | AI |
| AE | 112.2 | 97.8 | 103.5 | 100.0 | 92.6 | 85.5 | 88.3 | 89.0 | 75.7 | 84.5 | 94.2 | 101.8 | 101.4 | AE |
| BB | 114.9 | 137.1 | 155.0 | 159.9 | 146.2 | 147.6 | 143.7 | 135.2 | 143.6 | 156.3 | 156.7 | 139.8 | 124.7 | BB |
| CD | 98.7 | 109.6 | 120.3 | 107.6 | 96.4 | 105.1 | 90.6 | 78.7 | 110.5 | 106.6 | 107.5 | 109.9 | 100.2 | CD |
| CN | 83.0 | 91.0 | 106.3 | 104.2 | 100.1 | 104.7 | 104.9 | 94.8 | 105.7 | 101.5 | 101.8 | 109.6 | 84.9 | CN |
| Područje B | 82.4 | 89.3 | 104.0 | 101.9 | 102.9 | 98.0 | 97.2 | 108.8 | 92.8 | 97.9 | 99.4 | 88.8 | 79.1 | Section B |
| 05 | 97.5 | 93.4 | 106.9 | 104.3 | 106.4 | 97.0 | 97.9 | 107.9 | 87.0 | 95.8 | 97.9 | 88.4 | 82.0 | 05 |
| 07 | 32.9 | 77.7 | 89.0 | 77.4 | 75.8 | 79.6 | 72.8 | 92.1 | 73.6 | 79.5 | 71.9 | 50.1 | 51.7 | 07 |
| 08 | 74.0 | 82.0 | 113.0 | 126.2 | 125.2 | 129.4 | 132.2 | 143.9 | 155.1 | 137.9 | 154.3 | 155.3 | 113.1 | 08 |
| Područje C | 90.8 | 102.2 | 118.9 | 114.9 | 111.0 | 114.0 | 110.2 | 100.9 | 114.1 | 113.9 | 112.4 | 110.0 | 93.0 | Section C |
| 10 | 94.4 | 100.1 | 117.7 | 109.4 | 105.8 | 107.7 | 113.8 | 119.6 | 116.0 | 119.6 | 120.3 | 127.9 | 98.8 | 10 |
| 11 | 65.0 | 65.6 | 94.8 | 94.3 | 102.1 | 118.4 | 121.5 | 134.9 | 118.2 | 76.0 | 86.5 | 90.7 | 63.2 | 11 |
| 12 | 4.0 | 5.9 | 12.2 | 0.0 | 0.0 | 0.0 | 0.0 | 1.4 | 0.0 | 0.0 | 0.0 | 0.0 | 0.0 | 12 |
| 13 | 55.9 | 57.8 | 57.8 | 51.1 | 46.2 | 47.4 | 35.9 | 22.2 | 40.0 | 34.9 | 32.6 | 27.3 | 30.8 | 13 |
| 14 | 77.6 | 87.1 | 92.1 | 94.8 | 92.3 | 96.6 | 84.5 | 57.7 | 81.9 | 85.0 | 89.3 | 100.7 | 72.3 | 14 |
| 15 | 75.9 | 82.7 | 93.4 | 96.0 | 79.3 | 90.2 | 85.9 | 52.6 | 83.9 | 82.8 | 83.2 | 78.1 | 75.0 | 15 |
| 16 | 67.2 | 92.1 | 101.9 | 95.0 | 102.6 | 125.9 | 97.3 | 87.4 | 98.8 | 95.4 | 99.7 | 87.1 | 67.2 | 16 |
| 17 | 113.0 | 104.4 | 123.5 | 105.4 | 117.1 | 122.5 | 105.4 | 110.6 | 119.3 | 116.9 | 95.1 | 113.9 | 106.8 | 17 |
| 18 | 87.8 | 106.7 | 132.3 | 117.7 | 135.3 | 127.8 | 129.6 | 155.4 | 151.6 | 136.3 | 122.8 | 154.8 | 101.3 | 18 |
| 19 | 24.8 | 22.7 | 25.4 | 25.0 | 25.2 | 23.9 | 23.5 | 21.9 | 20.1 | 20.6 | 18.6 | 19.3 | 20.6 | 19 |
| 20 | 117.0 | 120.1 | 141.4 | 130.1 | 122.8 | 132.6 | 122.3 | 125.3 | 132.4 | 134.9 | 127.1 | 132.4 | 121.0 | 20 |
| 21 | 49.5 | 101.4 | 122.0 | 133.1 | 98.7 | 110.0 | 134.5 | 83.5 | 150.9 | 148.6 | 146.4 | 201.2 | 83.0 | 21 |
| 22 | 128.3 | 148.6 | 173.0 | 176.7 | 174.3 | 176.7 | 171.3 | 159.3 | 187.0 | 169.1 | 175.7 | 160.6 | 131.0 | 22 |
| 23 | 68.7 | 80.7 | 106.4 | 121.6 | 122.3 | 124.6 | 113.4 | 114.3 | 131.2 | 138.5 | 112.4 | 96.9 | 66.1 | 23 |
| 24 | 92.0 | 87.0 | 98.7 | 89.5 | 96.3 | 70.5 | 90.7 | 80.7 | 80.9 | 71.2 | 73.6 | 70.3 | 76.5 | 24 |
| 25 | 120.2 | 149.6 | 177.7 | 162.0 | 158.9 | 169.5 | 153.7 | 148.7 | 160.3 | 159.6 | 176.1 | 165.3 | 127.7 | 25 |
| 26 | 278.4 | 387.5 | 512.1 | 447.1 | 343.8 | 404.1 | 284.0 | 329.9 | 470.4 | 404.3 | 362.1 | 401.4 | 199.5 | 26 |
| 27 | 126.2 | 143.5 | 166.9 | 146.7 | 155.7 | 156.3 | 150.6 | 151.5 | 163.0 | 156.5 | 149.3 | 140.6 | 130.5 | 27 |
| 28 | 124.1 | 127.6 | 144.1 | 150.8 | 140.1 | 138.2 | 136.5 | 112.3 | 137.4 | 142.4 | 141.0 | 109.2 | 153.5 | 28 |
| 29 | 80.2 | 94.9 | 138.8 | 144.4 | 121.4 | 91.2 | 119.0 | 102.4 | 114.7 | 108.9 | 130.3 | 83.8 | 110.0 | 29 |
| 30 | 55.1 | 51.9 | 37.8 | 46.6 | 8.8 | 27.3 | 19.0 | 9.0 | 35.5 | 26.9 | 40.5 | 61.9 | 46.3 | 30 |
| 31 | 98.5 | 108.6 | 120.1 | 107.2 | 96.2 | 104.1 | 90.2 | 76.8 | 110.2 | 105.6 | 106.2 | 109.3 | 99.4 | 31 |
| 32 | 204.1 | 212.7 | 232.3 | 256.6 | 240.6 | 214.8 | 190.4 | 148.6 | 188.6 | 187.2 | 208.1 | 257.2 | 260.7 | 32 |
| 33 | 65.2 | 75.2 | 88.7 | 83.2 | 80.7 | 85.3 | 79.8 | 84.6 | 85.0 | 93.4 | 88.6 | 95.1 | 87.7 | 33 |
| Područje D | 128.6 | 108.8 | 112.4 | 108.1 | 96.3 | 89.3 | 93.3 | 91.1 | 78.8 | 88.8 | 102.6 | 116.9 | 118.0 | Section D |
| 35 | 128.6 | 108.8 | 112.4 | 108.1 | 96.3 | 89.3 | 93.3 | 91.1 | 78.8 | 88.8 | 102.6 | 116.9 | 118.0 | 35 |

TABLICA 3. MJESEČNA SERIJA INDEKSA INDUSTRIJSKE PROIZVODNJE - DESEZONIRANI INDEKSI
TABLE 3. MONTHLY SERIES OF INDUSTRIAL PRODUCTION INDICES - SEASONALLY ADJUSTED INDICES

φ 2015 = 100

| KD BiH 2010: GIG, Područja i Oblasti | DESEZONIRANI INDEKSI / Seasonally adjusted indices | | | | | | | | | | | | | NACE Rev. 2: MIGs, Sections and Divisions |
|---|--|-------|--------|-------|-------|-------|--------|---------|-------|-------|-------|--------|-------|--|
| | I/22 | II/22 | III/22 | IV/22 | V/22 | VI/22 | VII/22 | VIII/22 | IX/22 | X/22 | XI/22 | XII/22 | I/23 | |
| Ukupno | 106.3 | 107.8 | 112.3 | 112.4 | 110.9 | 108.2 | 104.3 | 104.9 | 105.2 | 103.3 | 105.0 | 105.7 | 106.0 | Total |
| AI | 110.8 | 113.9 | 118.5 | 114.4 | 114.2 | 111.5 | 108.4 | 109.4 | 112.1 | 108.3 | 110.6 | 112.1 | 114.9 | AI |
| AE | 101.6 | 94.4 | 95.8 | 106.7 | 99.6 | 93.4 | 91.5 | 92.3 | 83.7 | 87.1 | 89.0 | 89.3 | 91.9 | AE |
| BB | 141.1 | 148.9 | 152.7 | 152.2 | 145.0 | 142.3 | 140.2 | 147.2 | 136.4 | 140.0 | 148.0 | 143.7 | 153.6 | BB |
| CD | 101.6 | 111.9 | 117.6 | 108.4 | 102.6 | 105.7 | 96.5 | 87.7 | 104.0 | 98.9 | 101.5 | 103.5 | 102.7 | CD |
| CN | 98.3 | 101.2 | 104.9 | 102.8 | 101.4 | 100.6 | 97.9 | 98.7 | 100.1 | 98.2 | 99.7 | 104.4 | 100.6 | CN |
| Područje B | 99.8 | 98.2 | 102.3 | 106.6 | 106.4 | 98.0 | 95.0 | 101.7 | 88.5 | 89.4 | 91.6 | 87.2 | 95.2 | Section B |
| 05 | 102.4 | 99.0 | 104.8 | 110.3 | 111.1 | 100.7 | 99.3 | 105.5 | 85.9 | 90.0 | 90.7 | 81.9 | 86.0 | 05 |
| 07 | 77.2 | 82.0 | 82.9 | 78.3 | 77.3 | 75.1 | 62.7 | 77.5 | 60.8 | 67.3 | 65.6 | 70.2 | 96.1 | 07 |
| 08 | 129.0 | 121.1 | 127.8 | 122.8 | 128.5 | 119.4 | 118.9 | 125.2 | 132.1 | 114.7 | 137.4 | 154.6 | 184.2 | 08 |
| Područje C | 107.6 | 111.3 | 116.3 | 111.0 | 110.5 | 109.5 | 106.3 | 107.3 | 108.5 | 106.8 | 108.8 | 110.2 | 110.2 | Section C |
| 10 | 107.6 | 109.6 | 115.5 | 108.4 | 110.5 | 110.1 | 110.4 | 112.7 | 111.3 | 114.5 | 119.0 | 120.7 | 112.7 | 10 |
| 11 | 96.6 | 97.0 | 102.5 | 94.3 | 99.6 | 100.1 | 95.8 | 104.7 | 101.5 | 87.8 | 95.2 | 92.3 | 94.3 | 11 |
| 12 | 8.8 | 9.2 | 7.9 | 4.8 | 3.5 | 1.6 | 2.0 | 0.0 | 0.0 | 0.6 | 0.0 | 0.0 | 0.0 | 12 |
| 13 | 59.2 | 58.2 | 52.9 | 49.9 | 45.6 | 44.1 | 37.3 | 27.1 | 36.5 | 31.5 | 31.3 | 32.0 | 33.1 | 13 |
| 14 | 81.4 | 87.0 | 89.5 | 85.6 | 89.8 | 90.9 | 84.6 | 75.5 | 82.3 | 84.5 | 86.0 | 86.8 | 79.9 | 14 |
| 15 | 79.1 | 82.5 | 90.7 | 96.6 | 79.9 | 85.5 | 78.9 | 72.3 | 80.3 | 79.1 | 79.2 | 77.6 | 78.3 | 15 |
| 16 | 93.0 | 106.2 | 102.2 | 98.2 | 100.5 | 114.5 | 92.7 | 88.4 | 91.0 | 83.3 | 90.3 | 91.9 | 93.0 | 16 |
| 17 | 112.1 | 105.8 | 131.5 | 110.0 | 113.3 | 118.1 | 105.8 | 113.1 | 113.5 | 114.7 | 101.4 | 109.5 | 106.6 | 17 |
| 18 | 111.7 | 119.7 | 128.6 | 124.5 | 138.7 | 141.1 | 136.3 | 137.0 | 133.5 | 124.2 | 119.6 | 129.7 | 131.5 | 18 |
| 19 | 23.5 | 24.0 | 24.3 | 24.2 | 25.3 | 25.3 | 23.5 | 21.7 | 19.8 | 20.1 | 19.3 | 20.1 | 19.6 | 19 |
| 20 | 125.1 | 132.4 | 138.0 | 125.5 | 125.7 | 131.9 | 122.0 | 132.2 | 130.0 | 124.3 | 124.6 | 128.9 | 129.2 | 20 |
| 21 | 83.2 | 114.5 | 127.3 | 123.9 | 115.5 | 111.1 | 121.2 | 122.8 | 141.8 | 113.6 | 109.6 | 152.8 | 139.9 | 21 |
| 22 | 166.0 | 166.0 | 172.5 | 173.9 | 171.6 | 162.4 | 165.9 | 159.8 | 175.6 | 159.4 | 168.5 | 168.0 | 171.3 | 22 |
| 23 | 122.0 | 117.6 | 110.4 | 115.0 | 113.5 | 112.6 | 105.8 | 108.2 | 114.3 | 117.0 | 109.3 | 115.8 | 117.6 | 23 |
| 24 | 93.2 | 87.2 | 99.9 | 90.4 | 95.0 | 69.1 | 90.4 | 80.9 | 80.9 | 70.8 | 74.2 | 69.4 | 77.7 | 24 |
| 25 | 156.0 | 174.9 | 178.6 | 166.2 | 155.6 | 159.2 | 147.6 | 147.0 | 144.7 | 139.4 | 168.0 | 171.6 | 166.1 | 25 |
| 26 | 342.4 | 388.9 | 462.4 | 458.1 | 362.9 | 424.1 | 315.8 | 388.1 | 420.6 | 347.0 | 339.4 | 356.0 | 244.4 | 26 |
| 27 | 145.3 | 146.4 | 155.2 | 141.9 | 149.2 | 151.1 | 148.0 | 156.0 | 151.3 | 144.1 | 142.1 | 141.3 | 140.1 | 27 |
| 28 | 132.3 | 131.4 | 135.2 | 137.4 | 137.1 | 133.8 | 135.1 | 128.7 | 134.2 | 137.7 | 136.7 | 128.5 | 143.0 | 28 |
| 29 | 88.5 | 95.0 | 115.2 | 120.1 | 111.5 | 96.4 | 117.4 | 117.6 | 116.2 | 111.4 | 122.5 | 111.8 | 118.7 | 29 |
| 30 | 55.2 | 48.5 | 35.1 | 50.0 | 16.2 | 32.4 | 22.5 | 13.5 | 31.7 | 25.4 | 34.4 | 37.1 | 44.6 | 30 |
| 31 | 101.8 | 109.8 | 114.9 | 102.8 | 99.6 | 105.0 | 97.3 | 89.0 | 105.7 | 100.4 | 100.9 | 103.1 | 103.0 | 31 |
| 32 | 222.3 | 205.4 | 194.1 | 205.5 | 190.1 | 191.6 | 199.9 | 180.1 | 229.5 | 222.0 | 240.6 | 271.0 | 275.2 | 32 |
| 33 | 71.8 | 83.3 | 87.8 | 84.1 | 81.7 | 82.2 | 80.6 | 83.8 | 82.8 | 91.7 | 86.7 | 87.5 | 99.1 | 33 |
| Područje D | 107.7 | 100.3 | 101.5 | 115.5 | 107.2 | 101.9 | 98.2 | 96.2 | 92.5 | 95.7 | 97.4 | 98.3 | 99.0 | Section D |
| 35 | 107.7 | 100.3 | 101.5 | 115.5 | 107.2 | 101.9 | 98.2 | 96.2 | 92.5 | 95.7 | 97.4 | 98.3 | 99.0 | 35 |

XI/18

TABLICA 4. MJESEČNA SERIJA INDEKSA INDUSTRIJSKE PROIZVODNJE - TREND
TABLE 4. MONTHLY SERIES OF INDUSTRIAL PRODUCTION INDICES - TREND

φ 2015= 100

| KD BiH 2010: GIG, Područja i Oblasti | TREND / Trend | | | | | | | | | | | | | NACE Rev. 2: MIGs, Sections and Divisions |
|---|---------------|-------|--------|-------|-------|-------|--------|---------|-------|-------|-------|--------|-------|--|
| | I/22 | II/22 | III/22 | IV/22 | V/22 | VI/22 | VII/22 | VIII/22 | IX/22 | X/22 | XI/22 | XII/22 | I/23 | |
| Ukupno | 107.8 | 108.5 | 109.7 | 110.1 | 109.3 | 107.7 | 106.3 | 105.5 | 105.1 | 104.9 | 105.2 | 105.6 | 106.1 | Total |
| AI | 111.9 | 113.6 | 114.9 | 114.6 | 113.4 | 111.8 | 110.6 | 110.2 | 110.2 | 110.3 | 110.9 | 112.2 | 113.5 | AI |
| AE | 100.1 | 97.2 | 98.3 | 101.4 | 99.5 | 95.0 | 92.3 | 89.9 | 87.2 | 86.9 | 88.6 | 90.1 | 91.8 | AE |
| BB | 145.0 | 147.1 | 148.6 | 148.1 | 146.1 | 144.2 | 143.5 | 143.0 | 142.0 | 142.8 | 145.3 | 147.4 | 149.4 | BB |
| CD | 106.2 | 110.1 | 113.6 | 109.7 | 104.6 | 101.9 | 96.7 | 94.3 | 98.7 | 101.0 | 100.8 | 102.1 | 103.3 | CD |
| CN | 100.1 | 101.1 | 102.0 | 102.4 | 101.9 | 100.2 | 98.9 | 99.1 | 99.7 | 99.6 | 100.4 | 101.5 | 101.3 | CN |
| Područje B | 98.9 | 99.1 | 99.6 | 100.8 | 101.6 | 100.2 | 98.7 | 98.3 | 96.2 | 93.7 | 93.6 | 93.3 | 92.3 | Section B |
| 05 | 100.2 | 100.8 | 101.3 | 102.9 | 104.1 | 102.4 | 100.1 | 98.3 | 95.1 | 92.2 | 90.5 | 87.9 | 86.0 | 05 |
| 07 | 80.2 | 79.8 | 79.2 | 78.2 | 76.7 | 74.7 | 72.8 | 71.3 | 70.0 | 69.7 | 70.6 | 73.0 | 75.9 | 07 |
| 08 | 127.5 | 127.5 | 127.2 | 125.9 | 125.2 | 125.6 | 126.7 | 128.8 | 131.7 | 135.7 | 140.4 | 144.6 | 147.3 | 08 |
| Područje C | 109.4 | 110.8 | 111.6 | 111.2 | 110.2 | 109.1 | 108.2 | 108.0 | 108.1 | 108.4 | 109.0 | 109.5 | 109.9 | Section C |
| 10 | 107.8 | 109.9 | 111.3 | 111.7 | 111.2 | 110.5 | 110.8 | 112.1 | 113.1 | 114.4 | 115.6 | 115.3 | 114.1 | 10 |
| 11 | 99.7 | 99.4 | 99.0 | 98.7 | 98.4 | 98.2 | 97.9 | 97.6 | 97.2 | 96.7 | 96.3 | 96.0 | 95.8 | 11 |
| 12 | 9.6 | 8.4 | 7.1 | 5.8 | 4.5 | 3.3 | 2.2 | 1.2 | 0.3 | 0.0 | 0.0 | 0.0 | 0.0 | 12 |
| 13 | 60.1 | 57.2 | 53.5 | 49.6 | 46.4 | 42.8 | 36.0 | 31.8 | 32.7 | 32.7 | 31.6 | 32.2 | 33.4 | 13 |
| 14 | 83.3 | 84.7 | 85.8 | 86.3 | 86.4 | 85.8 | 84.4 | 83.1 | 83.0 | 83.6 | 83.8 | 83.5 | 82.6 | 14 |
| 15 | 82.9 | 83.7 | 84.7 | 84.7 | 83.6 | 82.3 | 80.9 | 80.0 | 79.8 | 79.7 | 79.4 | 79.0 | 78.8 | 15 |
| 16 | 101.2 | 102.4 | 102.8 | 102.9 | 104.7 | 104.3 | 99.1 | 93.7 | 90.6 | 88.9 | 89.6 | 92.2 | 94.4 | 16 |
| 17 | 111.7 | 112.4 | 113.4 | 113.5 | 113.2 | 112.9 | 112.6 | 112.5 | 112.6 | 112.3 | 110.7 | 108.7 | 107.6 | 17 |
| 18 | 116.7 | 120.3 | 124.2 | 127.8 | 131.1 | 133.2 | 133.7 | 132.9 | 131.2 | 129.2 | 128.3 | 128.8 | 129.6 | 18 |
| 19 | 24.2 | 24.0 | 24.3 | 24.5 | 25.1 | 24.9 | 23.5 | 21.7 | 20.4 | 20.0 | 19.8 | 19.8 | 20.0 | 19 |
| 20 | 128.7 | 129.9 | 130.3 | 129.4 | 128.7 | 128.4 | 128.3 | 128.5 | 128.3 | 127.8 | 127.8 | 128.6 | 129.4 | 20 |
| 21 | 118.5 | 118.6 | 119.8 | 120.6 | 121.0 | 121.6 | 122.7 | 124.3 | 125.8 | 126.8 | 128.2 | 130.3 | 131.7 | 21 |
| 22 | 167.6 | 168.8 | 171.1 | 171.5 | 169.0 | 166.1 | 163.6 | 164.4 | 167.4 | 166.6 | 167.1 | 169.6 | 170.7 | 22 |
| 23 | 116.0 | 116.5 | 113.1 | 113.3 | 113.5 | 111.0 | 108.2 | 109.1 | 113.2 | 114.1 | 112.7 | 114.4 | 116.0 | 23 |
| 24 | 84.7 | 86.3 | 87.2 | 86.8 | 85.0 | 82.8 | 81.3 | 80.1 | 78.9 | 77.7 | 76.6 | 76.0 | 75.9 | 24 |
| 25 | 163.0 | 166.4 | 167.3 | 164.3 | 160.0 | 156.2 | 152.7 | 150.4 | 150.0 | 152.9 | 158.8 | 163.8 | 165.9 | 25 |
| 26 | 366.0 | 397.1 | 422.8 | 415.3 | 394.0 | 383.6 | 376.6 | 378.1 | 380.4 | 364.6 | 341.9 | 320.7 | 303.6 | 26 |
| 27 | 145.8 | 147.6 | 148.3 | 147.3 | 147.7 | 149.2 | 150.8 | 151.6 | 149.5 | 145.4 | 142.7 | 141.2 | 139.8 | 27 |
| 28 | 132.5 | 133.0 | 133.7 | 134.2 | 134.3 | 134.2 | 134.0 | 133.9 | 134.2 | 134.6 | 134.7 | 134.8 | 135.0 | 28 |
| 29 | 94.9 | 100.4 | 106.1 | 108.8 | 108.6 | 108.8 | 111.1 | 114.0 | 115.6 | 116.7 | 117.5 | 117.1 | 116.6 | 29 |
| 30 | 57.0 | 47.1 | 42.4 | 35.4 | 26.6 | 25.8 | 22.6 | 20.0 | 25.2 | 29.9 | 33.4 | 39.0 | 43.7 | 30 |
| 31 | 106.7 | 107.7 | 107.9 | 105.5 | 102.8 | 101.0 | 98.7 | 98.0 | 99.7 | 101.0 | 101.4 | 102.1 | 102.7 | 31 |
| 32 | 210.7 | 208.9 | 207.3 | 206.4 | 206.2 | 207.2 | 209.9 | 214.7 | 221.6 | 229.4 | 237.6 | 245.3 | 250.9 | 32 |
| 33 | 80.1 | 81.9 | 85.3 | 84.7 | 82.6 | 81.8 | 82.2 | 83.5 | 85.7 | 88.0 | 88.6 | 90.6 | 94.9 | 33 |
| Područje D | 107.1 | 102.7 | 104.6 | 109.5 | 107.7 | 102.5 | 99.1 | 96.4 | 94.8 | 95.8 | 97.6 | 98.6 | 99.7 | Section D |
| 35 | 107.1 | 102.7 | 104.6 | 109.5 | 107.7 | 102.5 | 99.1 | 96.4 | 94.8 | 95.8 | 97.6 | 98.6 | 99.7 | 35 |

Privitak 1. IZVOD IZ KLASIFIKACIJE DJELATNOSTI KD BIH 2010
 Inset 1. EXTRACT FROM CLASSIFICATION OF ACTIVITIES KD BIH 2010

KD BIH 2010, GIG-ovi, Područja, Oblasti i djelatnosti

NACE Rev.2: MIGs, Sections and Divisions of activities

| Oznaka / Šifra | Naziv kategorije | Label / Code | Category name |
|----------------|---|--------------|---|
| Ukupno | Ukupno industrija | Total | Total industry |
| GIG | Glavne industrijske skupine (GIG) | MIGs | Main Industrial Groups (MIGs) |
| AI | Intermedijarni proizvodi | AI | Intermediate goods |
| AE | Energija | AE | Energy |
| BB | Kapitalni proizvodi | BB | Capital goods |
| CD | Trajni proizvodi za široku uporabu | CD | Consumer durables |
| CN | Netrajni proizvodi za široku uporabu | CN | Consumer non-durables |
| | Područja i oblasti KD BIH 2010 | | NACE Rev.2 Sections and Divisions |
| B | VAĐENJE RUDA I KAMENA | B | MINING AND QUARRYING |
| 05 | Vađenje ugljena i lignita (mrkog ugljena) | 05 | Mining of coal and lignite |
| 06 | Vađenje sirove nafte i prirodnog plina | 06 | Extraction of crude petroleum and natural gas |
| 07 | Vađenje ruda metala | 07 | Mining of metal ores |
| 08 | Vađenje ostalih ruda i kamena | 08 | Other mining and quarrying |
| 09 | Pomoćne uslužne djelatnosti u vađenju ruda i kamena | 09 | Mining support service activities |
| C | PRERAĐIVAČKA INDUSTRIJA | C | MANUFACTURING |
| 10 | Proizvodnja prehrambenih proizvoda | 10 | Manufacture of food products |
| 11 | Proizvodnja pića | 11 | Manufacture of beverages |
| 12 | Proizvodnja duhanskih proizvoda | 12 | Manufacture of tobacco products |
| 13 | Proizvodnja tekstila | 13 | Manufacture of textiles |
| 14 | Proizvodnja odjeće | 14 | Manufacture of wearing apparel |
| 15 | Proizvodnja kože i proizvoda od kože | 15 | Manufacture of leather and related products |
| 16 | Prerada drveta i proizvoda od drveta i pluta, osim namještaja; proizvodnja predmeta od slame i pletarskih materijala | 16 | Manufacture of wood and of products of wood and cork, except furniture; manufacture of articles of straw and plaiting materials |
| 17 | Proizvodnja papira i proizvoda od papira | 17 | Manufacture of paper and paper products |
| 18 | Tiskanje i umnožavanje snimljenih zapisa | 18 | Printing and reproduction of recorded media |
| 19 | Proizvodnja koksa i rafiniranih naftnih proizvoda | 19 | Manufacture of coke and refined petroleum products |
| 20 | Proizvodnja kemikalija i kemijskih proizvoda | 20 | Manufacture of chemicals and chemical products |
| 21 | Proizvodnja osnovnih farmaceutskih proizvoda i farmaceutskih pripravaka | 21 | Manufacture of basic pharmaceutical products and pharmaceutical preparations |
| 22 | Proizvodnja proizvoda od gume i plastičnih masa | 22 | Manufacture of rubber and plastic products |
| 23 | Proizvodnja ostalih proizvoda od nemetalnih minerala | 23 | Manufacture of other non-metallic mineral products |
| 24 | Proizvodnja baznih metala | 24 | Manufacture of basic metals |
| 25 | Proizvodnja gotovih metalnih proizvoda, osim strojeva i opreme | 25 | Manufacture of fabricated metal products, except machinery and equipment |
| 26 | Proizvodnja računara, elektroničkih i optičkih proizvoda | 26 | Manufacture of computer, electronic and optical products |
| 27 | Proizvodnja električne opreme | 27 | Manufacture of electrical equipment |
| 28 | Proizvodnja strojeva i opreme, d. n. | 28 | Manufacture of machinery and equipment n.e.c. |
| 29 | Proizvodnja motornih vozila, prikolica i poluprikolica | 29 | Manufacture of motor vehicles, trailers and semi-trailers |
| 30 | Proizvodnja ostalih transportnih sredstava | 30 | Manufacture of other transport equipment |
| 31 | Proizvodnja namještaja | 31 | Manufacture of furniture |
| 32 | Ostala prerađivačka industrija | 32 | Other manufacturing |
| 33 | Popravka i instalacija mašina i opreme | 33 | Repair and installation of machinery and equipment |
| D | Proizvodnja i opskrba električnom energijom, plinom, parom i klimatizacija (izuzev grane 35.3 - proizvodnja i opskrba parom i klimatizacija) | D | Electricity, gas, steam and air conditioning supply (except group 35.3 - Steam and air conditioning supply) |
| 35 | Proizvodnja i opskrba električnom energijom i plinom | 35 | Electricity and gas supply |

METODOLOŠKA OBJAŠNENJA

Agencija za statistiku BiH i entitetski zavodi za statistiku su uskladili prezentaciju i interpretaciju mjesečnih indeksa industrijske proizvodnje s onom koja je propisana EU uredbama o kratkoročnim poslovnim statistikama i preporukama Eurostata o publiciranju indeksa industrijske proizvodnje. Agencija za statistiku BiH, pored redovitog mjesečnog priopćenja o indeksu fizičkog obujma industrijske proizvodnje, redovito objavljuje i serije mjesečnih indeksa koji su obračunati prema baznoj 2015. godini.

Usklađivanje sa statističkim konceptima EU i način prezentacije podataka omogućuje korisnicima podataka neposredno poređenje podataka za Bosnu i Hercegovinu sa podacima drugih zemalja koje prezentira i publikuje Eurostat na internet stranicama: <http://ec.europa.eu/eurostat> i <http://ec.europa.eu/eurostat/euroindicators>

Metod računanja

Koncepti, definicije i metodologija koji se koriste za izračun indeksa industrijske proizvodnje su usklađeni sa EU propisima u domenu kratkoročnih statistika (*EU STS - Short Term Statistics*).

Osnovne informacije o indeksu industrijske proizvodnje i kratka metodologija izračuna prikazane su u dokumentu "Metodološki nautci za izračun indeksa fizičkog obujma industrijske proizvodnje u Bosni i Hercegovini - (MD 29)" koja je dostupna na web stranici Agencije za statistiku BiH: <http://www.bhas.gov.ba> u sekciji industrija.

Standardi i klasifikacije

Za izračun i objavljivanje rezultata indeksa industrijske proizvodnje od 2013. koriste se novi standardi: BiH klasifikacija djelatnosti - KD BiH 2010 (EU NACE Rev.2.) i Mjesečna NIP BiH 2018. Mjesečna NIP BiH 2018 je Nomenklatura industrijskih proizvoda Bosne i Hercegovine, koja se koristi za provođenje Mjesečnog izvješća industrije M KPS IND-1. Mjesečna NIP BiH 2018 utemeljena je na izvornoj NIP BiH 2010 (Službeni glasnik br. 12/11 i 41/11) i ažurirana sa izmjenama i dopunama u EU PRODCOM Listi nastalim od 2013. do 2017. godine. Mjesečna NIP BiH 2018 je dodatno razrađena i dopunjena sukladno specifičnim potrebama obračuna indeksa industrijske proizvodnje u BiH, a suglasno sa EU regulativama za kratkoročne poslovne statistike.

NOTES ON METHODOLOGY

Agency for Statistics of BiH and Entity Statistics are harmonized presentation and interpretation of monthly industrial production indices with those arranged by the EU regulations on short-term statistics and Eurostat's recommendations on publication of the industrial production indices. Agency for Statistics of BiH, next to regular monthly releases on the index of industrial production, regularly publishes series of monthly indices which are calculated according to the base 2015th year.

Harmonization with the EU statistical concepts and method of presentation of data enables users of data to directly compare data for Bosnia and Herzegovina with the data of other countries which are published on the Eurostat website: <http://ec.europa.eu/eurostat> and <http://ec.europa.eu/eurostat/euroindicators>.

Calculation method

Concepts, definitions and methodology used for calculating of the industrial production indices are harmonized with the EU Regulations in the field of Short Term Statistics (*EU STS*).

The basic information on BiH industrial production index and short methodology are presented in the publication "Methodological guidelines for the calculation of the industrial production index in Bosnia and Herzegovina (MD 29)", which is available on the website of the Agency for Statistics of BiH: <http://www.bhas.gov.ba> in Industry section.

Standards and Classifications

For calculating and publishing the results of the industrial production index from 2013, new standards are used: BiH Classification of Activities KD BIH 2010 (EU NACE Rev. 2.) and Monthly Nomenclature of Industrial Products NIP BiH 2018. Monthly NIP 2018 Nomenclature of Industrial Products of Bosnia and Herzegovina, which was used for the implementation of Monthly Industry Report M KPS IND-1. Monthly NIP 2018 is based on the original NIP BiH 2010 (Official Gazette no. 12/11 and 41/11) and updated with amendments in EU PRODCOM Lists occurring since 2013. to the 2017. Monthly NIP 2018 is further developed and supplemented in accordance with the specific purpose of calculating the index of industrial production in BiH, and in accordance with EU regulations for short-term business statistics.

Indeks industrijske proizvodnje (IPI) obuhvaća djelatnosti koje su razvrstane u sljedeća područja KD BiH 2010:

- B - Vađenje ruda i kamena
- C - Prerađivačka industrija
- D - Proizvodnja i opskrba električnom energijom i plinom (isključujući granu 35.3)

Suglasno EU STS propisu Oblast 36 - Sakupljanje, prečišćavanje i opskrba vodom i Grana 35.3 - Proizvodnja i opskrba parom i klimatizacija ne ulaze u obračun indeksa industrijske proizvodnje.

Izvod iz KD BiH 2010 koji se odnosi na područja i oblasti djelatnosti koji pripadaju industriji nalazi se u sastavu priopćenja.

Agregati glavnih industrijskih skupina (GIG)

Grupiranje se vrši prema pretežnoj uporabi proizvoda unutar oblasti i grane djelatnosti iz klasifikacije KD BiH 2010.

- **AI - Proizvodi za međufaznu potrošnju:** oblasti i grane KD BiH 2010: 07 - 09, 10.6, 10.9, 13.1 - 13.3, 16, 17, 20.1 - 20.3, 20.5, 20.6, 22 - 24, 25.5 - 25.7, 25.9, 26.1, 26.8, 27.1 - 27.4 i 27.9
- **AE - Energija:** oblasti KD BiH 2010: 05, 06, 19 i 35 (isključujući 35.3)
- **BB - Kapitalni proizvodi:** oblasti i grane KD BiH 2010: 25.1 - 25.4, 26.2, 26.3, 26.5, 26.6, 28, 29, 30.1 - 30.4, 32.5 i 33
- **CD - Trajni proizvodi za široku potrošnju:** oblasti i grane KD BiH 2010: 26.4, 26.7, 27.5, 30.9, 31, 32.1 i 32.2
- **CN - Netrajni proizvodi za široku potrošnju:** oblasti i grane KD BiH 2010: 10.1 - 10.5, 10.7, 10.8, 11, 12, 13.9, 14, 15, 18, 20.4, 21, 32.3, 32.4 i 32.9

Prikazivanje serija indeksa

Sukladno preporukama Eurostata, desezoniranje i kalendarsko prilagođavanje se vrši metodom TRAMO-SEATS u JDEMETRA+ okruženju na mjesečnoj seriji izvornih indeksa industrijske proizvodnje. Produljavanje serije indeksa dodavanjem novih mjesečnih zapažanja za svaki idući mjesec može, zbog karakteristika primijenjene metode, prouzročiti ispravke već objavljenih desezoniranih i kalendarski prilagođenih indeksa za nekoliko mjeseci unazad.

Industrial production index (IPI) covers activities classified into the following sections of the KD BiH 2010:

- *B - Mining and quarrying*
- *C - Manufacturing*
- *D - Electricity and gas supply (excluding group 35.3)*

In line with EU STS Regulation Section 36 - Collection, purification and water supply and Group 35.3 - Production and supply of steam and air conditioning are not included in the calculation of the index of industrial production.

Extract from the NACE 2010 which refers to the sections and divisions of activities that belong to the industry given the statement.

Main Industrial Grouping (MIGs) aggregates

Grouping is done according to the prevailing use of the product within the division and group of NACE rev.2.

- **AI - Intermediate goods:** the KD BiH 2010 divisions and groups: 07 - 09, 10.6, 10.9, 13.1 - 13.3, 16, 17, 20.1 - 20.3, 20.5, 20.6, 22 - 24, 25.5 - 25.7, 25.9, 26.1, 26.8, 27.1 - 27.4 and 27.9
- **AE - Energy:** the KD BiH 2010 divisions: 05, 06, 19 and 35 (exl. 35.3)
- **BB - Capital goods:** the KD BiH 2010 divisions and groups: 25.1 - 25.4, 26.2, 26.3, 26.5, 26.6, 28, 29, 30.1 - 30.4, 32.5 and 33
- **CD - Consumer durables:** the KD BiH 2010 divisions and groups: 26.4, 26.7, 27.5, 30.9, 31, 32.1 and 32.2
- **CN - Consumer non-durables:** the KD BiH 2010 divisions and groups: 10.1 - 10.5, 10.7, 10.8, 11, 12, 13.9, 14, 15, 18, 20.4, 21, 32.3, 32.4 and 32.9

Indices series presentation

In accordance with the Eurostat's Recommendations, seasonal adjustment and working-day adjustment has been done by using the TRAMO-SEATS method in JDEMETRA+ environment on the monthly series of original industrial production indices. Extending indices series by adding new monthly observations for each month could, because of the applied method characteristics, cause subsequent corrections of already published seasonally and working-day adjusted indices for several months backwards.

Publikuje Agencija za statistiku Bosne i Hercegovine, 71000 Sarajevo, Zelenih beretki 26
Published by the Agency for Statistics of the Bosnia and Herzegovina, 71000 Sarajevo, Zelenih beretki 26

Telefon/Phone: +387 (33) 911 911 | Telefaks/Telefax: +387 (33) 220 622
Elektronska pošta/E-mail: bhas@bhas.gov.ba | Internetska stranica/Web site: www.bhas.gov.ba

Odgovorne osobe/Responsible persons:

Velimir Jukić, pomoćnik ravnateljice za poslovne statistike
Velimir Jukić, Assistant Director of Business Statistics

Vesna Čužić, ravnateljica
Vesna Čužić, Director

Priopćenje priredili: Fahir Kanlić, Maria Ostojić, Tanja Miović i Belma Mesihović
Prepared by: Fahir Kanlic, Maria Ostojic, Tanja Miovcic and Belma Mesihovic



 **Razmislite o očuvanju okoliša prije tiskanja dokumenta.**
Please consider the environment before printing this document.