



SAOPŠTENJE

FIRST RELEASE



Molimo korisnike da prilikom upotrebe podataka obavezno navedu izvor
Users are kindly requested to mention the data source

GODINA / YEAR I

SARAJEVO, 26.04.2011.

BROJ / NUMBER 5

STATISTIKA SAOBRAĆAJA

Transport Statistics

U **cestovnom prijevozu robe** broj pređenih kilometara vozila u IV kvartalu 2010. godine u odnosu na IV kvartal prethodne godine veći je za 22,8%, opseg prevezene robe je manji za 13,5%. Ostvareni tonski kilometri veći su za 22,2%.

U **cestovnom prijevozu putnika** pređeni kilometri vozila manji su za 1,7%, broj prevezenih putnika veći je za 2,4%. Ostvareni putnički kilometri manji su za 0,9%.

U **gradsko-prigradskom prijevozu** u IV kvartalu 2010. godine u odnosu na isti kvartal prethodne godine pređeni kilometri vozila manji su za 5,1%, a broj prevezenih putnika veći je za 0,8%.

U **željezničkom prijevozu robe** opseg prevezene robe u IV kvartalu 2010. godine manji je za 5,8%, a broj ostvarenih tonskih kilometara manji je za 1,3% u odnosu na isti kvartal prethodne godine.

Broj prevezenih putnika u **željezničkom prijevozu putnika** u IV kvartalu 2010. godine manji je za 0,4%, a broj ostvarenih putničkih kilometara je veći za 1,3% u odnosu na isti kvartal prethodne godine.

U **zračnom prijevozu** broj aerodromskih operacija u IV kvartalu 2010. godine manji je za 5,3%, a broj prevezenih putnika je veći za 5,0% u odnosu na isti kvartal prethodne godine.

U IV kvartalu 2010. godine u odnosu na IV kvartal 2009. godine, broj **pismonosnih pošiljki** manji je za 10,4%, a broj **paketskih pošiljki** manji je za 16,5%. U istom tom periodu broj operacija u **platnom prometu** je manji za 3,4%.

Kretanje indeksa obima prometa u cestovnom i željezničkom prometu po kvartalima prikazano je u grafikonima.

The vehicle kilometres covered in **transport of goods** in IVth quarter of 2010. compared to the IVth quarter of the previous year higher for 22.8%, volume of transported goods less for 13.5%. Realized tonne kilometres higher for 22.2%.

The vehicle kilometres covered in **transport of passengers** less for 1.7%, number of passengers transported higher for 2.4%. Realized passengers kilometers less for 0.9%

The total kilometers covered in **urban - suburban transport** in IVth quarter of 2010. compared to the same quarter of previous year less for 5.1%, and the number of passengers transported higher for 0.8%.

In **railway transport of good**, volume of goods transported in IVth quarter of 2010. less for 5.8%, and number of metric tons kilometers less for 1.3% compared to the same quarter of the previous year.

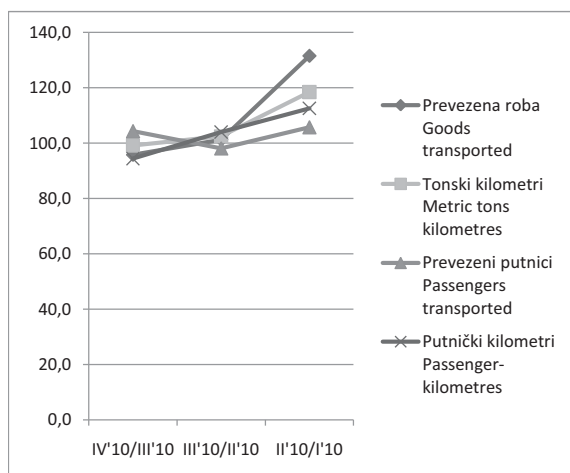
The total number of passengers, in **railway transport of passengers**, less for 0.4%, and number of passengers kilometers higher for 1.3% compared to the same quarter of previous year.

In **air transport**, the number of aircraft movements in IVth quarter of 2010., less for 5.3%, number of passengers transported higher for 5.0%, compared to the same quarter of previous year.

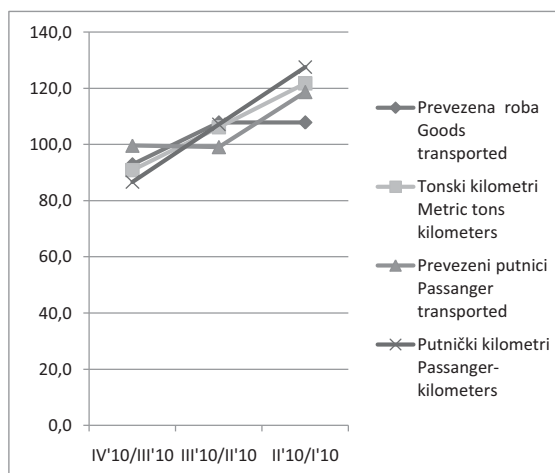
In IVth quarter of 2010. compared to IVth quarter of 2009., the number of postal services in letters less for 10.4% and number of parcels less for 16.5%. In that same period number of operation in payment less for 3.4%.

Trends in volume indices of transport in the road and railway transport by quarters is shown in the chart.

G.1 CESTOVNI PRIJEVOZ / ROAD TRANSPORT
Indeksi po kvartalima / Indices by quarters



G.2 ŽELJEZNIČKI PRIJEVOZ / RAILWAY TRANSPORT
Indeksi po kvartalima / Indices by quarters



CESTOVNI PRIJEVOZ / ROAD TRANSPORT

Obim prometa po indikatorima prometa <i>Volume of transport by transport indicators</i>	IV kvartal/ quarter	Ukupno / Total	III kvartal/ quarter	IV kvartal/ quarter	Ukupno / Total
	2009.		2010.		

PRIJEVOZ ROBE / TRANSPORT OF GOODS

Pređeni kilometri vozila, u hiljadama <i>Vehicle-kilometres covered, in thousands</i>	61.289	237.352	74.718*	75.241*	284.780
Prevezeno tona robe, u hiljadama <i>Tons of goods transported, in thousands</i>	1.440	5.068	1.301	1.245	4.808
Tonski kilometri, u hiljadama <i>Metric tons kilometres, in thousands</i>	433.449	1.711.575	534.428*	529.636	2.026.594

PRIJEVOZ PUTNIKA / TRANSPORT OF PASSENGERS

Pređeni kilometri vozila, u hiljadama <i>Vehicle-kilometres covered, in thousands</i>	24.750	99.768	25.444	24.335	97.663
Prevezeni putnici, u hiljadama <i>Passengers transported, in thousands</i>	7.257	27.669	7.128*	7.432	28.669
Putnički kilometri, u hiljadama <i>Passenger-kilometres, in thousands</i>	472.743	1.959.227	495.854*	468.310	1.864.471

Indeksi po indikatorima prometa <i>Indices by transport indicators</i>	IV 2010 III 2010	IV 2010 IV 2009	2010 2009
---	---------------------	--------------------	--------------

PRIJEVOZ ROBE / TRANSPORT OF GOODS

Pređeni kilometri vozila <i>Vehicle-kilometres covered</i>	100,7	122,8	120,0
Prevezeno tona robe <i>Tons of goods transported</i>	95,7	86,5	94,9
Tonski kilometri <i>Metric tons kilometres</i>	99,1	122,2	118,4

PRIJEVOZ PUTNIKA / TRANSPORT OF PASSENGERS

Pređeni kilometri vozila <i>Vehicle-kilometres covered</i>	95,6	98,3	97,9
Prevezeni putnici <i>Passengers transported</i>	104,3	102,4	103,7
Putnički kilometri <i>Passenger-kilometres</i>	94,4	99,1	95,2

GRADSKO - PRIGRADSKI PRIJEVOZ / URBAN - SUBURBAN TRANSPORT

Obim prometa po indikatorima prometa <i>Volume of transport by transport indicators</i>	IV kvartal/ quarter	Ukupno / Total	III kvartal/ quarter	IV kvartal/ quarter	Ukupno / Total
	2009.		2010.		

Pređeni kilometri vozila, u hiljadama ¹⁾ <i>Vehicle kilometres covered, in thousands</i>	15.474	59.786	13.424	14.684	59.659
Prevezeni putnici, u hiljadama <i>Passengers transported, in thousands</i>	44.251	164.240	38.913	44.624	168.010

Indeksi po indikatorima prometa <i>Indices by transport indicators</i>	IV 2010 III 2010	IV 2010 IV 2009	2010 2009
---	---------------------	--------------------	--------------

Pređeni kilometri vozila <i>Vehicle kilometres covered</i>	109,4	94,9	99,8
Prevezeni putnici <i>Passengers transported</i>	114,7	100,8	102,3

1) Podatak o pređenim kilometrima vozila ne sadrži podatke za Distrikt Brčko BiH.
Data on vehicles kilometer covered does not include data for the Brcko District

*podatak je korigovan/data is corrected

ŽELJEZNIČKI PRIJEVOZ / RAILWAY TRANSPORT

Obim prometa po indikatorima prometa <i>Volume of transport by transport indicators</i>	IV kvartal/ quarter	Ukupno / Total	III kvartal/ quarter	IV kvartal/ quarter	Ukupno / Total
	2009.			2010.	

PRIJEVOZ ROBE / GOODS TRANSPORT

Prevezeno tona robe, u hiljadama <i>Tons of goods transported, in thousands</i>	3.419	11.117	3.466	3.220	12.882
Tonski kilometri, u hiljadama <i>Metric tons kilometers, in thousands</i>	312.977	992.373	339.782	308.902	1.232.034

PRIJEVOZ PUTNIKA / PASSENGER TRANSPORT

Prevezeni putnici, u hiljadama <i>Passanger transported, in thousands</i>	233	910	233	232	898
Putnički kilometri, u hiljadama <i>Passanger-kilometers, in thousands</i>	14.182	61.264	16.593	14.367	58.559

Indeksi po indikatorima prometa <i>Indices by transport indicators</i>	IV 2010 III 2010	IV 2010 IV 2009	2010 2009
---	---------------------	--------------------	--------------

PRIJEVOZ ROBE / GOODS TRANSPORT

Prevezeno tona robe <i>Tons of goods transported</i>	92,9		94,2		115,9
Tonski kilometri <i>Metric tons kilometers</i>	90,9		98,7		124,2

PRIJEVOZ PUTNIKA / PASSENGER TRANSPORT

Prevezeni putnici <i>Passanger transported</i>	99,6		99,6		98,7
Putnički kilometri <i>Passanger-kilometers</i>	86,6		101,3		95,6

ZRAČNI PROMET / AIR TRANSPORT ²⁾

Obim prometa po indikatorima prometa <i>Volume of transport by transport indicators</i>	IV kvartal/ quarter	Ukupno / Total	III kvartal/ quarter	IV kvartal/ quarter	Ukupno / Total
	2009.			2010.	

Broj aerodromskih operacija <i>Number of aircraft movements</i>	2.074	8.790	2.592	1.965	8.394
Broj prevezenih putnika <i>Number of passengers</i>	125.788	549.170	200.326	132.136	591.335
Uzletjeli (ukrcani) <i>Embarked</i>	63.643	274.923	102.341	68.328	296.714
Sletjeli (iskrcani) <i>Disembarked</i>	62.145	272.247	97.985	63.808	294.621
Prevezeni teret, tona <i>Freight transported, tones</i>	531	2.052	530	483	1.845
Utovaren <i>Loaded</i>	163	689	217	154	621
Istovaren <i>Unloaded</i>	368	1.363	313	329	1.224
Prevezena pošta, tona <i>Mail transported, tones</i>	89	311	76	93	334
Utovarena <i>Loaded</i>	28	99	23	27	105
Istovarena <i>Unloaded</i>	61	212	53	66	229

Indeksi po indikatorima prometa <i>Indices by transport indicators</i>	IV 2010 III 2010	IV 2010 IV 2009	2010 2009
---	---------------------	--------------------	--------------

Broj aerodromskih operacija <i>Aircraft movements</i>	75,8		94,7		95,5
Broj prevezenih putnika <i>Number of passengers</i>	66,0		105,0		107,7
Prevezeni teret <i>Freight transported</i>	91,1		91,0		89,9
Prevezena pošta <i>Mail transported</i>	122,4		104,5		107,4

2) Izvor podataka: Direkcija za civilno vazduhoplovstvo BiH
Source : Directorate of Civil Aviation of BiH

POŠTANSKI PROMET / POSTAL TRANSPORT

Obim prometa po indikatorima prometa <i>Volume of transport by transport indicators</i>	IV kvartal/ quarter	Ukupno / Total	III kvartal/ quarter	IV kvartal/ quarter	Ukupno / Total
	2009.			2010.	

POŠTANSKE USLUGE / POSTAL SERVICES

Broj pisama - Ukupno, hiljada komada <i>Number of letters - Total, in thousands</i>	20.883	76.774	17.240	18.716	71.165
Otpremljena pisma <i>Sent letters</i>	20.240	73.967	16.242	17.850	67.489
unutrašnji promet <i>domestic transport</i>	19.493	71.549	15.692	17.190	65.033
međunarodni promet <i>international transport</i>	747	2.418	550	660	2.456
Prispjela pisma (međunarodni promet) <i>Arrived letters (international transport)</i>	643	2.807	998	866	3.676

PAKETNE USLUGE / PARCEL SERVICES

Broj paketa - Ukupno, u hiljadama komada <i>Number of parcels - Total, in thousands</i>	90,3	311,4	66,5	75,3	294,1
Otpremljeni paketi <i>Sent parcels</i>	80,2	279,2	58,8	62,1	253,3
unutrašnji promet <i>domestic transport</i>	78,2	274,1	57,5	60,7	248,1
međunarodni promet <i>international transport</i>	1,4	5,2	1,3	1,4	5,2
Prispjeli paketi (međunarodni promet) <i>Arrived parcels (international transport)</i>	10,0	32,2	7,7	13,2	40,7

PLATNI PROMET / PAYMENTS OPERATIONS

Broj operacija - Ukupno, u hiljadama <i>Number of operations - Total, in thousands</i>	7.900	30.798	7.835	7.632	31.043
Uplate <i>Payments</i>	6.426	24.801	6.333	6.149	24.993
Isplate <i>Pays off</i>	1.474	5.997	1.502	1.483	6.050

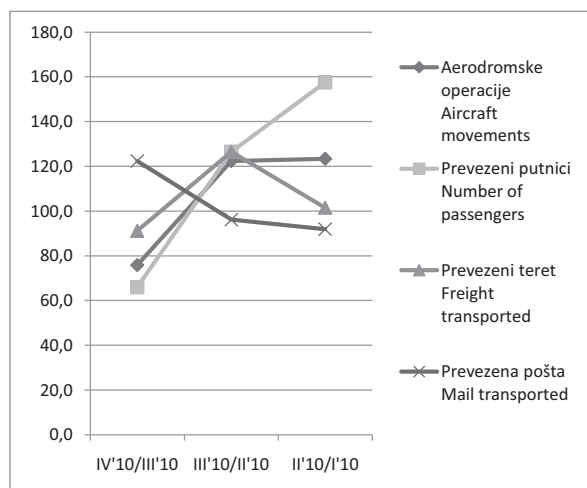
Indeksi po indikatorima prometa <i>Indices by transport indicators</i>	IV 2010 III 2010	IV 2010 IV 2009	2010 2009
---	---------------------	--------------------	--------------

Broj pisama - Ukupno <i>Number of letters - Total</i>	108,6	89,6	92,7
Broj paketa - Ukupno <i>Number of parcels - Total</i>	113,3	83,5	94,4
Broj platnih operacija - Ukupno <i>Number of payments operations - Total</i>	97,4	96,6	100,8

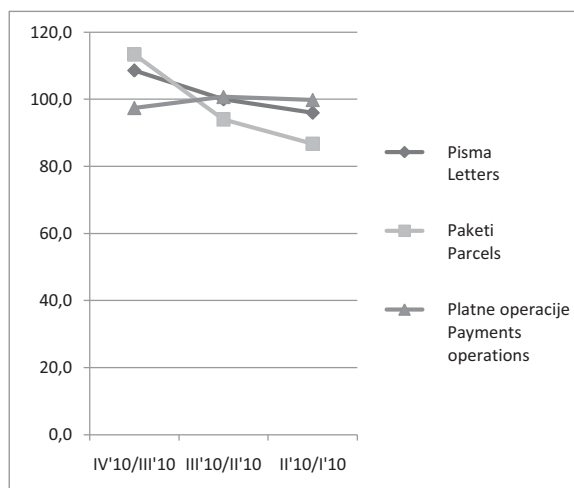
Kretanje indeksa obima prometa u zračnom i poštanskom prometu po kvartalima prikazano je u grafikonima.

Trends in volume indices of transport in air and postal transport by quarters of is shown in the chart.

G.3 ZRAČNI PROMET / AIR TRANSPORT
Indeksi po kvartalima / Indices by quarters



G.4 POŠTANSKI PROMET / POSTAL TRANSPORT
Indeksi po kvartalima / Indices by quarters



Metodološka objašnjenja

Podaci o cestovnom i željezničkom prometu dobijeni su obradom mjesečnih i kvartalnih statističkih izvještaja koje su entitetski statistički zavodi prikupili. Izvještajne jedinice su preduzeća i drugi poslovni subjekti koji se bave prijevozom putnika i robe (tereta) u unutrašnjem i međunarodnom prijevozu.

Statistički podaci o zračnim operacijama, prevezenim putnicima, teretu i pošti na aerodromima u BiH preuzeti su od Direkcije za civilno vazduhoplovstvo BiH. Direkcija je ustupljene statističke podatke obradila u skladu sa statističkim programom i standardima International Civil Aviation Organization (ICAO).

Svi podaci o broju putnika, teretu i pošti odnose se na međunarodni zračni promet, jer u BiH nema domaćeg zračnog prometa.

Podaci o poštanskom prometu dobiveni su na osnovu obrade statističkih izvještaja koje su entitetski statistički zavodi prikupili. Izvještajne jedinice su preduzeća registrovana u ovoj djelatnosti.

Definicije

Pod pojmom **prijevoz** podrazumijeva se kretanje putnika ili tereta od jednog mjesta (mjesto ukrcanja/utovara) do drugog mjesta (mjesto iskrcanja/istovara) i predstavlja mjeru aktivnosti prijevoznih preduzeća.

Unutrašnji prijevoz obuhvaća prijevoz putnika obavljen između mjesta ukrcanja i mjesta iskrcanja unutar granica naše zemlje.

Međunarodni prijevoz obuhvaća prijevoz putnika između mjesta ukrcanja u našoj zemlji i mjesta iskrcanja u inostranstvo i obratno.

Prijevoz putnika obuhvaća prevezene putnike u unutrašnjem i međunarodnom prometu.

Putnički kilometar je jedinica mjere koja predstavlja prijevoz jednog putnika na udaljenosti od jednog kilometra.

Pod robom se podrazumijeva svaka roba koja se prevozi željezničkim i cestovnim sredstvima.

Prijevoz robe iskazuje se u tonama i u tonskim kilometrima, a predstavlja zbroj svih kilometara ostvarenih u unutrašnjem i međunarodnom prijevozu.

Tonski kilometar je jedinica mjere koja predstavlja prijevoz jedne tone robe na udaljenosti od jednog kilometra.

Gradski prijevoz putnika se odnosi na rad poslovnih subjekata koji se bave prijevozom putnika u gradskim i prigradskim naseljima. Predstavljen je podacima o pređenim kilometrima vozila i prevezenim putnicima.

Pismonosne i paketne pošiljke obuhvataju broj pismonosnih pošiljaka prispjelih u unutrašnjem prometu i prispjelih i otpremljenih u međunarodnom prometu.

Pismonosna pošiljka jest vrsta pošiljke u poštanskom prometu u koju ubrajamo obična pisma, dopisnice, tiskovine, preporučene pismonosne pošiljke i pisma s označenom vrijednošću.

Platni promet se odnosi na uplate po poštanskim uplatnicama, uplate i isplate po žiro i tekućim računima, po štednim knjižicama poštanske štedionice i poslovnih banaka i isplate po inostranim štednim knjižicama.

Notes of methodology

Data on Road and Railway transport were obtained by processing monthly and quarterly statistical data from surveys conducted by the Statistical Offices at the level of entities. The reporting units for these surveys are enterprises and other business subjects engaged in domestic and international transport of passengers and goods.

Statistical data on aircraft movements, number of passengers, freight and mail transported on airports in BiH are taken from Directorate of civil aviation of BiH. Directorate processed supplied statistical data in accordance with International Civil Aviation Organization (ICAO) statistical programme and standards.

All data on number of passengers, freight and mail are related to international air transport. BiH has no domestic air transport

Data on postal transport were obtained by processing statistical data from surveys conducted by the Statistical Offices at the level of entities. The reporting units for these surveys are enterprises registered in this activity.

Definitions

*Considered as **transport** is movement of passengers or cargo from one place (loading place) to another place (unloading place) and representing the operation of transport enterprises.*

***Domestic transport** implies transport of passenger between places of loading and unloading within the borders of the country.*

***International transport** implies transport of passengers between the place of loading in our country and the place of unloading abroad, or the other way round.*

***Transport of passengers** include transported passengers into domestic and international transport.*

***Passenger kilometre** is a unit of measure which refers to transport of one passenger at the distance of one kilometre.*

***Goods** are any goods transported by railway or road transport means.*

***Goods transport** is given in tons and ton kilometres, and it is the sum of all kilometres realized in domestic and international transport.*

***Ton kilometre** is a unit of measure which refers to transport of one tone of goods at the distance of one kilometre.*

***Urban transport of passengers** refers to the work of economic entities engaged in transport of passengers in urban and suburban settlements. Data on urban/suburban transport is represented by the indicators of kilometers covered and passenger transported.*

***Letter and parcel postal services** include the number of letters arrived in domestic traffic, as well as those arrived and sent in international traffic.*

***Postal letter** is a type of item in the postal traffic, which includes letters, postcards, blanks, registered mail and insured letters*

***Payment operations** refer to payments by postal money order, payments by giro and current accounts, by saving books of postal savings and business banks, and payments by foreign saving books*

Izdaje i štampa Agencija za statistiku Bosne i Hercegovine, 71000 Sarajevo, Zelenih beretki 26
Published and printed by the Agency for Statistics of the Bosnia and Herzegovina, 71000 Sarajevo, Zelenih beretki 26

Telefon/Phone: +387 (33) 220 626 · Telefaks/Telefax: +387 (33) 220 622
Elektronska pošta/E-mail : bhas@bhas.ba · Internetska stranica/Web site: <http://www.bhas.ba>

Odgovara direktor Zdenko Milinović
Person responsible: Zdenko Milinović, Director General

Saopštenje priredili: Nataša Lučić, Mia Šimović
Prepared by: Ms. Nataša Lučić, Ms. Mia Šimović
Lektor: Amra Kapetanović
Language Editor: Ms. Amra Kapetanović

Štampa: 100 primjeraka
100 copies printed

Podaci iz ovog saopštenja objavljuju se i na internetu
First Release data are also published on the Internet