



SAOPŠTENJE FIRST RELEASE



Molimo korisnike da prilikom upotrebe podataka obavezno navedu izvor
Users are kindly requested to mention the data source

GODINA / YEAR I

SARAJEVO, 21.06.2010.

BROJ / NUMBER 1

STATISTIKA SAOBRAĆAJA Transport Statistics

U **cestovnom prijevozu robe** broj pređenih kilometara vozila u I kvartalu 2010. godine u odnosu na I kvartal prethodne godine veći je za 9,5 %, opseg prevezene robe je veći za 0,7 %. Ostvareni tonski kilometri veći su za 12,1 %.

U **cestovnom prijevozu putnika** pređeni kilometri vozila manji su za 1,0 %, broj prevezenih putnika veći je za 2,7 %. Ostvareni putnički kilometri manji su za 5,9 %.

U **gradsko-prigradskom prijevozu** u I kvartalu 2010. godine u odnosu na isti kvartal prethodne godine pređeni kilometri vozila manji su za 6,9 %, a broj prevezenih putnika manji je za 0,1 %.

U **željezničkom prijevozu robe** opseg prevezene robe u I kvartalu 2010. godine veći je za 40,0 %, a broj ostvarenih tonskih kilometara veći je za 50,3 % u odnosu na isti kvartal prethodne godine.

Broj prevezenih putnika u **željezničkom prijevozu putnika** u I kvartalu 2010. godine manji je za 6,2 %, a broj ostvarenih putničkih kilometara manji je za 17,0 % u odnosu na isti kvartal prethodne godine.

U **avionskom prijevozu** broj aerodromskih operacija u I kvartalu 2010. godine veći je za 9,6 %, a broj prevezenih putnika za 10,4 % u odnosu na isti kvartal prethodne godine.

U I kvartalu 2010. godine u odnosu na I kvartal 2009. godine, **broj pismonosnih pošiljki** manji je za 1,22%, a **broj paketskih pošiljki** manji je za 8,8 %. U istom tom periodu **broj operacija u platnom prometu** veći je za 3,0 %.

Kretanje indeksa obima prometa u cestovnom i željezničkom prometu po kvartalima prikazano je u grafikonima.

The vehicle kilometres covered in **transport of goods** in Ist quarter of 2010. compared to the Ist quarter of the previous year higher for 9.5 %, volume of transported goods higher for 0.7 %. Realized tonne kilometres higher for 12.1 %.

The vehicle kilometres covered in **transport of passengers** less for 1.0 %, number of passengers transported higher for 2.7 %. Realized passengers kilometers less for 5.9 %

The total kilometers covered in **urban - suburban transport** in Ist quarter of 2010. compared to the same quarter of previous year less for 6.9 %, and the number of passengers transported less for 0.1 %.

In **railway transport of goods**, volume of goods transported in Ist quarter of 2010. higher for 40.0 %, and number of metric tons kilometers higher for 50.3 % compared to the same quarter of the previous year.

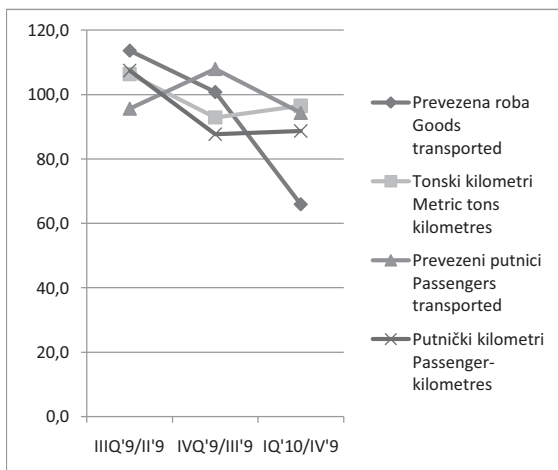
The total number of passengers, in **railway transport of passengers**, less for 6.2 %, and number of passengers kilometers less for 17.0 % compared to the same quarter of previous year.

In **air transport**, the number of aircraft movements in Ist quarter of 2010., increased by 9.6 %, number of passengers transported increased by 10.4 %, compared to the same quarter of previous year.

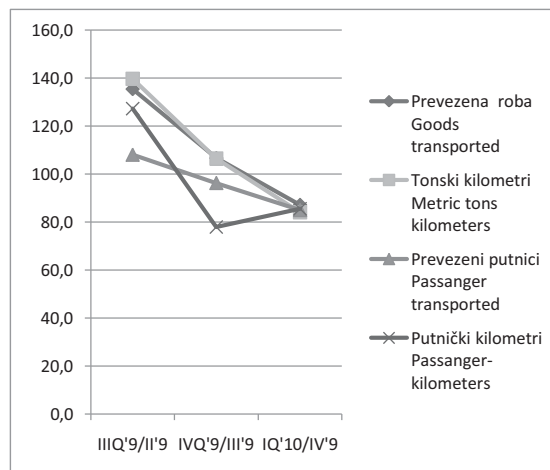
In Ist quarter of 2010. compared to Ist quarter of 2009., the **number of postal services** in letters less for 1.22 % and **number of parcels** less for 8.8 %. In that same period **number of operation in payment** increased by 3.0 %.

Trends in volume indices of transport in the road and railway transport by quarters is shown in the chart.

G.1 CESTOVNI PRIJEVOZ / ROAD TRANSPORT
Indeksi po kvartalima / Indices by quarters



G.2 ŽELJEZNIČKI PRIJEVOZ / RAILWAY TRANSPORT
Indeksi po kvartalima / Indices by quarters



CESTOVNI PRIJEVOZ / ROAD TRANSPORT

Obim prometa po indikatorima prometa <i>Volume of transport by transport indicators</i>	I	II	III	IV	I
	kvartal/ quarter	kvartal/ quarter	kvartal/ quarter	kvartal/ quarter	kvartal/ quarter
	2009				2010

PRIJEVOZ ROBE / TRANSPORT OF GOODS

Pređeni kilometri vozila, u hiljadama <i>Vehicle-kilometres covered, in thousands</i>	52.858	60.468	62.737	61.289	57.892
Prevezeno tona robe, u hiljadama <i>Tons of goods transported, in thousands</i>	942	1.258	1.429	1.440	949
Tonski kilometri, u hiljadama <i>Metric tons kilometres, in thousands</i>	372.958	438.577	466.591	433.449	418.221

PRIJEVOZ PUTNIKA / TRANSPORT OF PASSENGERS

Pređeni kilometri vozila, u hiljadama <i>Vehicle-kilometres covered, in thousands</i>	23.315	25.624	26.079	24.750	23.077
Prevezeni putnici, u hiljadama <i>Passengers transported, in thousands</i>	6.658	7.031	6.723	7.257	6.841
Putnički kilometri, u hiljadama <i>Passenger-kilometres, in thousands</i>	445.748	501.496	539.240	472.743	419.276

Indeksi po indikatorima prometa <i>Indices by transport indicators</i>	<u>IV 2009</u> III 2009	<u>I 2010</u> IV 2009	<u>I 2010</u> I 2009
---	----------------------------	--------------------------	-------------------------

PRIJEVOZ ROBE / TRANSPORT OF GOODS

Pređeni kilometri vozila <i>Vehicle-kilometres covered</i>	97,7	94,5	109,5
Prevezeno tona robe <i>Tons of goods transported</i>	100,8	65,9	100,7
Tonski kilometri <i>Metric tons kilometres</i>	92,9	96,5	112,1

PRIJEVOZ PUTNIKA / TRANSPORT OF PASSENGERS

Pređeni kilometri vozila <i>Vehicle-kilometres covered</i>	94,9	93,2	99,0
Prevezeni putnici <i>Passengers transported</i>	107,9	94,3	102,7
Putnički kilometri <i>Passenger-kilometres</i>	87,7	88,7	94,1

GRADSKO - PRIGRADSKI PRIJEVOZ / URBAN - SUBURBAN TRANSPORT

Obim prometa po indikatorima prometa <i>Volume of transport by transport indicators</i>	I	II	III	IV	I
	kvartal/ quarter	kvartal/ quarter	kvartal/ quarter	kvartal/ quarter	kvartal/ quarter
	2009				2010

Pređeni kilometri vozila, u hiljadama ¹⁾ <i>Vehicle kilometres covered, in thousands</i>	14.864	15.382	14.066	15.474	13.837
Prevezeni putnici, u hiljadama <i>Passengers transported, in thousands</i>	41.458	42.281	36.250	44.251	41.414

Indeksi po indikatorima prometa <i>Indices by transport indicators</i>	<u>IV 2009</u> III 2009	<u>I 2010</u> IV 2009	<u>I 2010</u> I 2009
---	----------------------------	--------------------------	-------------------------

Pređeni kilometri vozila <i>Vehicle kilometres covered</i>	110,0	89,4	93,1
Prevezeni putnici <i>Passengers transported</i>	122,1	93,6	99,9

1) Podatak o pređenim kilometrima vozila ne sadrži podatke za Brčko Distrikt.
Data on vehicles kilometer covered does not include data for the Brcko District

ŽELJEZNIČKI PRIJEVOZ / RAILWAY TRANSPORT

Obim prometa po indikatorima prometa <i>Volume of transport by transport indicators</i>	I kvartal/ quarter	II kvartal/ quarter	III kvartal/ quarter	IV kvartal/ quarter	I kvartal/ quarter
	2009				2010

PRIJEVOZ ROBE / GOODS TRANSPORT

Prevezeno tona robe, u hiljadama <i>Tons of goods transported, in thousands</i>	2.129	2.365	3.204	3.419	2.981
Tonski kilometri, u hiljadama <i>Metric tons kilometers, in thousands</i>	175.031	210.454	293.911	312.977	263.106

PRIJEVOZ PUTNIKA / PASSENGER TRANSPORT

Prevezeni putnici, u hiljadama <i>Passanger transported, in thousands</i>	211	224	242	233	198
Putnički kilometri, u hiljadama <i>Passanger-kilometers, in thousands</i>	14.614	14.283	18.185	14.182	12.126

Indeksi po indikatorima prometa <i>Indices by transport indicators</i>	IV 2009 III 2009	I 2010 IV 2009	I 2010 I 2009
---	---------------------	-------------------	------------------

PRIJEVOZ ROBE / GOODS TRANSPORT

Prevezeno tona robe <i>Tons of goods transported</i>	106,7	87,2	140,0
Tonski kilometri <i>Metric tons kilometers</i>	106,5	84,1	150,3

PRIJEVOZ PUTNIKA / PASSENGER TRANSPORT

Prevezeni putnici <i>Passanger transported</i>	96,3	85,0	93,8
Putnički kilometri <i>Passanger-kilometers</i>	78,0	85,5	83,0

AVIONSKI PRIJEVOZ/ AIR TRANSPORT ²⁾

Obim prometa po indikatorima prometa <i>Volume of transport by transport indicators</i>	I kvartal/ quarter	II kvartal/ quarter	III kvartal/ quarter	IV kvartal/ quarter	I kvartal/ quarter
	2009				2010

Broj aerodromskih operacija <i>Number of aircraft movements</i>	1.567	2.383	2.766	2.074	1.718
Broj prevezenih putnika <i>Number of passengers</i>	91.029	148.955	183.398	125.788	100.479
Uzletjeli (ukrcani) <i>Embarked</i>	46.203	70.274	94.803	63.643	50.901
Sletjeli (iskrcani) <i>Disembarked</i>	44.826	78.681	88.595	62.145	49.578
Prevezeni teret, tona <i>Freight transported, tones</i>	407	461	653	531	413
Utovaren <i>Loaded</i>	109	125	292	163	121
Istovaren <i>Unloaded</i>	298	336	361	368	292
Prevezena pošta, tona <i>Mail transported, tones</i>	83	72	67	89	86
Utovarena <i>Loaded</i>	26	23	22	28	28
Istovarena <i>Unloaded</i>	57	49	45	61	58

Indeksi po indikatorima prometa <i>Indices by transport indicators</i>	IV 2009 III 2009	I 2010 IV 2009	I 2010 I 2009
---	---------------------	-------------------	------------------

Broj aerodromskih operacija <i>Aircraft movements</i>	75,0	82,8	109,6
Broj prevezenih putnika <i>Number of passengers</i>	68,6	79,9	110,4
Prevezeni teret <i>Freight transported</i>	81,3	77,8	101,5
Prevezena pošta <i>Mail transported</i>	132,8	96,6	103,6

2) **Izvor podataka:** Direkcija za civilno vazduhoplovstvo BiH
Source : Directorate of Civil Aviation of BiH

POŠTANSKI SAOBRAĆAJ / POSTAL TRANSPORT

Obim prometa po indikatorima prometa <i>Volume of transport by transport indicators</i>	I kvartal/ quarter	II kvartal/ quarter	III kvartal/ quarter	IV kvartal/ quarter	I kvartal/ quarter
	2009				2010

POŠTANSKE USLUGE / POSTAL SERVICES

Broj pisama - Ukupno, hiljada komada <i>Number of letters - Total, in thousands</i>	18.178	18.849	18.864	20.883	17.963
Otpremljena pisma <i>Sent letters</i>	17.387	18.060	18.280	20.240	14.930
unutrašnji promet <i>domestic transport</i>	16.809	17.569	17.678	19.493	14.394
međunarodni promet <i>international transport</i>	578	491	602	747	536
Prispjela pisma (međunarodni promet) <i>Arrived letters (international transport)</i>	791	789	584	643	3.033

PAKETNE USLUGE / PARCEL SERVICES

Broj paketa - Ukupno, u hiljadama komada <i>Number of parcels - Total, in thousands</i>	89,6	64,3	67,3	90,3	81,7
Otpremljeni paketi <i>Sent parcels</i>	77,5	58,3	63,2	80,2	70,5
unutrašnji promet <i>domestic transport</i>	76,5	57,2	62,2	78,2	69,2
međunarodni promet <i>international transport</i>	1,3	1,2	1,3	1,4	1,3
Prispjeli paketi (međunarodni promet) <i>Arrived parcels (international transport)</i>	12,1	6,1	4,1	10,0	11,2

PLATNI PROMET / PAYMENTS OPERATIONS

Broj operacija - Ukupno, u hiljadama <i>Number of operations - Total, in thousands</i>	7.566	7.552	7.780	7.900	7.796
Uplate <i>Payments</i>	6.108	5.999	6.268	6.426	6.228
Isplate <i>Pays off</i>	1.458	1.553	1.512	1.474	1.568

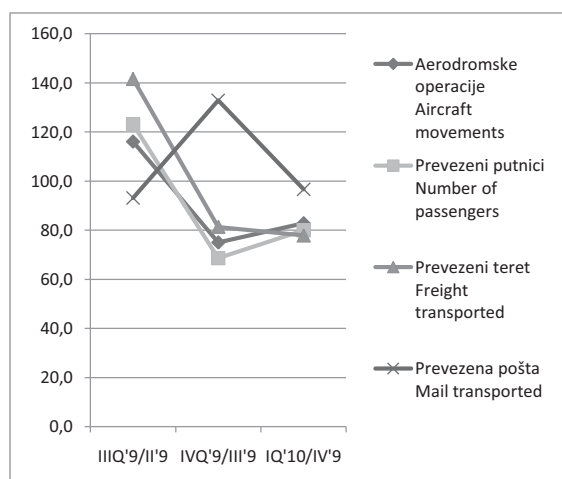
Indeksi po indikatorima prometa <i>Indices by transport indicators</i>	IV 2009 III 2009	I 2010 IV 2009	I 2010 I 2009
---	---------------------	-------------------	------------------

Broj pisama - Ukupno <i>Number of letters - Total</i>	110,7	86,0	98,8
Broj paketa - Ukupno <i>Number of parcels - Total</i>	134,2	90,5	91,2
Broj platnih operacija - Ukupno <i>Number of payments operations - Total</i>	101,5	98,7	103,0

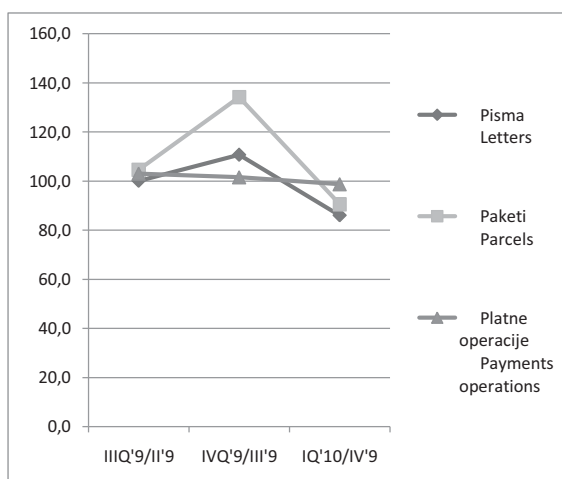
Kretanje indeksa obima prometa u avionskom saobraćaju i poštanskom saobraćaju po kvartalima prikazano je u grafikonima.

Trends in volume indices of transport in air and postal transport by quarters of is shown in the chart.

G.3 AVIONIŠKI SAOBRAĆAJ / AIR TRANSPORT
Indeksi po kvartalima / Indices by quarters



G.4 POŠTANSKI SAOBRAĆAJ / POSTAL TRANSPORT
Indeksi po kvartalima / Indices by quarters



Metodološka objašnjenja

Podaci o cestovnom i željezničkom prometu dobiveni su obradom mjesečnih i kvartalnih statističkih izvještaja koje su entitetski statistički zavodi prikupili. Izvještajne jedinice su preduzeća i drugi poslovni subjekti koji se bave prijevozom putnika i robe (tereta) u unutrašnjem i međunarodnom prijevozu.

Statistički podaci o aerodromskim operacijama, prevezenim putnicima, teretu i pošti na aerodromima u BiH preuzeti su od Direkcije za civilno vazduhoplovstvo BiH. Direkcija je ustupljene statističke podatke obradila u skladu sa statističkim programom i standardima International Civil Aviation Organization (ICAO).

Svi podaci o broju putnika, teretu i pošti odnose se na međunarodni zračni promet, jer u BiH nema domaćeg vazdušnog saobraćaja.

Podaci o poštanskom saobraćaju dobiveni su na osnovu obrade statističkih izvještaja koje su entitetski statistički zavodi prikupili. Izvještajne jedinice su preduzeća registrovana u ovoj djelatnosti.

Definicije

Pod pojmom **prijevoz** podrazumjeva se kretanje putnika ili tereta od jednog mjesta (mjesto ukrcaja/utovara) do drugog mjesta (mjesta iskrcanja/istovara) i predstavlja mjeru aktivnosti prijevoznih preduzeća.

Unutrašnji prijevoz obuhvaća prijevoz putnika obavljen između mjesta ukrcaja i mjesta iskrcanja unutar granica naše zemlje.

Međunarodni prijevoz obuhvaća prijevoz putnika između mjesta ukrcaja u našoj zemlji i mjesta iskrcanja u inostranstvu i obratno.

Prijevoz putnika obuhvaća prevezene putnike u unutrašnjem i međunarodnom prometu.

Putnički kilometar je jedinica mjere koja predstavlja prijevoz jednog putnika na udaljenosti od jednog kilometra.

Pod robom se podrazumjeva svaka roba koja se prevozi željezničkim i cestovnim sredstvima.

Prijevoz robe iskazuje se u tonama i u tonskim kilometrima, a predstavlja zbroj svih kilometara ostvarenih u unutrašnjem i međunarodnom prijevozu.

Tonski kilometar je jedinica mjere koja predstavlja prijevoz jedne tone robe na udaljenosti od jednog kilometra.

Gradski prijevoz putnika se odnosi na rad poslovnih subjekata koji se bave prijevozom putnika u gradskim i prigradskim naseljima. Predstavljen je podacima o pređenim kilometrima vozila i prevezenim putnicima.

Pismonosne i paketne pošiljke obuhvataju broj pismonosnih pošiljaka prispjelih u unutrašnjem prometu i prispjelih i otpremljenih u međunarodnom prometu.

Pismonosna pošiljka jest vrsta pošiljke u poštanskom saobraćaju u koju ubrajamo obična pisma, dopisnice, tiskovine, preporučene pismonosne pošiljke i pisma s označenom vrijednošću.

Platni promet se odnosi na uplate po poštanskim uplatnicama, uplate i isplate po žiro i tekućim računima, po štednim knjižicama poštanske štedionice i poslovnih banaka i isplate po inostranim štednim knjižicama.

Notes of methodology

Data on Road and Railway transport were obtained by processing monthly and quarterly statistical data from surveys conducted by the Statistical Offices at the level of entities. The reporting units for these surveys are enterprises and other business subjects engaged in domestic and international transport of passengers and goods.

Statistical data on aircraft movements, number of passengers, freight and mail transported on airports in BiH are taken from Directorate of civil aviation of BiH. Directorate processed supplied statistical data in accordance with International Civil Aviation Organization (ICAO) statistical programme and standards.

All data on number of passengers, freight and mail are related to international air transport. BiH has no domestic air transport

Data on postal transport were obtained by processing statistical data from surveys conducted by the Statistical Offices at the level of entities. The reporting units for these surveys are enterprises registered in this activity.

Definitions

Considered as transport is movement of passengers or cargo from one place (loading place) to another place (unloading place) and representing the operation of transport enterprises.

Domestic transport implies transport of passenger between places of loading and unloading within the borders of the country.

International transport implies transport of passengers between the place of loading in our country and the place of unloading abroad, or the other way round.

Transport of passengers include transported passengers into domestic and international transport.

Passenger kilometre is a unit of measure which refers to transport of one passenger at the distance of one kilometre.

Goods are any goods transported by railway or road transport means.

Goods transport is given in tons and ton kilometres, and it is the sum of all kilometres realized in domestic and international transport.

Ton kilometre is a unit of measure which refers to transport of one tone of goods at the distance of one kilometre.

Urban transport of passengers refers to the work of economic entities engaged in transport of passengers in urban and suburban settlements. Data on urban/suburban transport is represented by the indicators of kilometers covered and passenger transported.

Letter and parcel postal services include the number of letters arrived in domestic traffic, as well as those arrived and sent in international traffic.

Postal letter is a type of item in the postal traffic, which includes letters, postcards, blanks, registered mail and insured letters

Payment operations refer to payments by postal money order, payments by giro and current accounts, by saving books of postal savings and business banks, and payments by foreign saving books

Izdaje i štampa Agencija za statistiku Bosne i Hercegovine, 71000 Sarajevo, Zelenih beretki 26
Published and printed by the Agency for Statistics of the Bosnia and Herzegovina, 71000 Sarajevo, Zelenih beretki 26

Telefon/Phone: +387 (33) 220 626 · Telefaks/Telefax: +387 (33) 220 622
Elektronska pošta/E-mail : bhas@bhas.ba · Internetska stranica/Web site: <http://www.bhas.ba>

Odgovara direktor Zdenko Milinović
Person responsible: Zdenko Milinović, Director General

Saopštenje priredili: Nataša Lučić, Mia Šimović i Bojana Cicović
Prepared by: Ms. Nataša Lučić, Ms. Mia Šimović and Ms. Bojana Cicović
Lektor: Amra Kapetanović
Language Editor: Ms. Amra Kapetanović

Štampa: 100 primjeraka
100 copies printed

Podaci iz ovog saopštenja objavljuju se i na internetu
First Release data are also published on the Internet