



SAOPŠTENJE

FIRST RELEASE



Molimo korisnike da prilikom upotrebe podataka obavezno navedu izvor
Users are kindly requested to mention the data source

GODINA / YEAR I

SARAJEVO, 1. kvartal 2010.

BROJ / NUMBER 8

STATISTIKA SAOBRAĆAJA

Transport Statistics

U **cestovnom prijevozu robe** broj pređenih kilometara vozila u III. kvartalu 2010. godine u odnosu na III. kvartal prethodne godine je veći za 18,2%, opseg prevezene robe je manji za 8,9 %. Ostvareni tonski kilometri su veći za 14,7%.

U **cestovnom prijevozu putnika** pređeni kilometri vozila su manji za 2,4%, broj prevezenih putnika je veći za 5,9%. Ostvareni putnički kilometri su manji za 8,5%.

U **gradsko-prigradskom prijevozu** u III. kvartalu 2010. godine u odnosu na isti kvartal prethodne godine pređeni kilometri vozila su manji za 4,6% a broj prevezenih putnika je veći za 7,3%.

U **željezničkom prijevozu robe** opseg prevezene robe u III. kvartalu 2010. godine veći je za 8,2%, a broj ostvarenih tonskih kilometara veći je za 15,6% u odnosu na isti kvartal prethodne godine.

Broj prevezenih putnika u **željezničkom prijevozu putnika** u III. kvartalu 2010. godine manji je za 3,7%, a broj ostvarenih putničkih kilometara manji je za 8,8% u odnosu na isti kvartal prethodne godine.

U **zračnom prijevozu** broj aerodromskih operacija u III. kvartalu 2010. godine je manji za 6,3% , a broj prevezenih putnika veći je za 9,2% u odnosu na isti kvartal prethodne godine.

U III. kvartalu 2010. godine u odnosu na III. kvartal 2009. godine, **broj pismonosnih pošiljki** manji je za 8,6%, a **broj paketskih pošiljki** manji je za 1,1%. U istom tom periodu **broj operacija u platnom prometu** je veći za 0,7% .

Kretanje indeksa obima prometa u cestovnom i željezničkom prometu po kvartalima prikazano je u grafikonima.

The vehicle kilometres covered in **transport of goods** in the IIIrd quarter of 2010. compared to the IIIrd quarter of the previous year higher for 18.2%, volume of transported goods less for 8.9%. Realized tonne kilometres higher for 14.7%.

The vehicle kilometres covered in **transport of passengers** less for 2.4%, number of passengers transported higher for 5.9%. Realized passengers kilometers less for 8.5%

The total kilometers covered in **urban - suburban transport** in the IIIrd quarter of 2010. compared to the same quarter of previous year less for 4.6%, and the number of passengers transported higher for 7.3%.

In **railway transport of goods**, volume of goods transported in the IIIrd quarter of 2010. higher for 8.2%, and number of metric tons kilometers higher for 15.6% compared to the same quarter of the previous year.

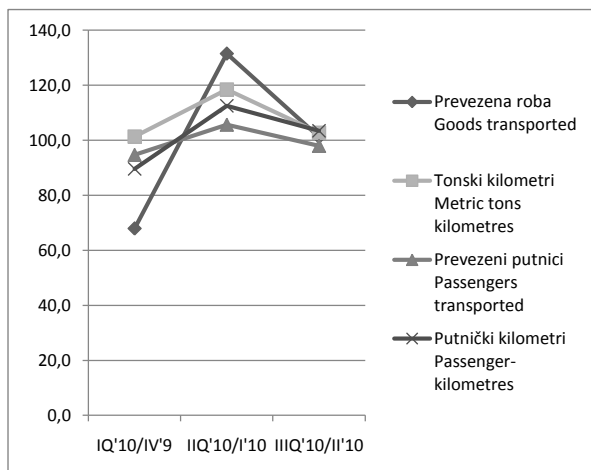
The total number of passengers, in **railway transport of passengers** in the IIIrd quarter of 2010, less for 3.7%, and number of passengers kilometers less for 8.8% compared to the same quarter of previous year.

In **air transport**, the number of aircraft movements in the IIIrd quarter of 2010., less for 6.3%, number of passengers transported higher for 9.2%, compared to the same quarter of previous year.

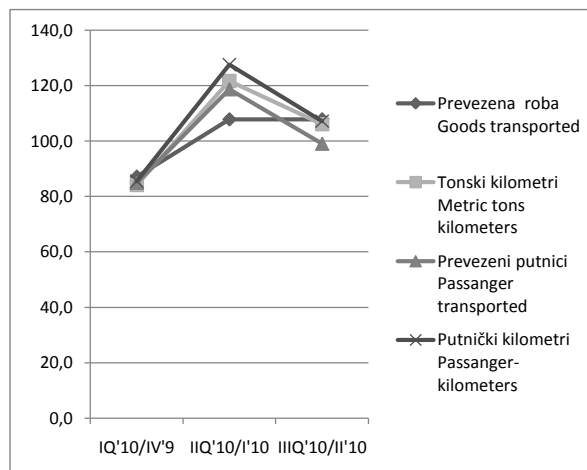
In the IIIrd quarter of 2010. compared to the IIIrd quarter of 2009., the **number of postal services** in letters less for 8.6% and **number of parcels** less for 1.1%. In that same period **number of operation in payment** is 0.7% higher .

Trends in volume indices of transport in the road and railway transport by quarters is shown in the chart.

G.1 CESTOVNI PRIJEVOZ / ROAD TRANSPORT
Indeksi po kvartalima / Indices by quarters



G.2 ŽELJEZNIČKI PRIJEVOZ / RAILWAY TRANSPORT
Indeksi po kvartalima / Indices by quarters



CESTOVNI PRIJEVOZ / ROAD TRANSPORT

Obim prometa po indikatorima prometa <i>Volume of transport by transport indicators</i>	III kvartal / quarter	I-III kvartali / quarters	I kvartal / quarter	II kvartal / quarter	III kvartal / quarter	I-III kvartali / quarters
	2009			2010		

PRIJEVOZ ROBE / TRANSPORT OF GOODS

Predjeni kilometri vozila, u hiljadama <i>Vehicle-kilometres covered, in thousands</i>	62.737	176.063	61.313*	73.234*	74.159	208.706
Prevezeno tona robe, u hiljadama <i>Tons of goods transported, in thousands</i>	1.429	3.628	977*	1.285*	1.301	3.563
Tonski kilometri, u hiljadama <i>Metric tons kilometres, in thousands</i>	466.591	1.278.126	439.371*	520.587*	535.130	1.495.088

PRIJEVOZ PUTNIKA / TRANSPORT OF PASSENGERS

Predjeni kilometri vozila, u hiljadama <i>Vehicle-kilometres covered, in thousands</i>	26.079	75.018	23.210*	24.674*	25.444	73.328
Prevezeni putnici, u hiljadama <i>Passengers transported, in thousands</i>	6.723	20.412	6.874*	7.264	7.120	21.258
Putnički kilometri, u hiljadama <i>Passenger-kilometres, in thousands</i>	539.240	1.486.484	423.697*	476.610	493.285	1.393.592

Indeksi po indikatorima prometa <i>Indices by transport indicators</i>	III 2010 II 2010	III 2010 III 2009	I - III 2010 I - III 2009
---	-----------------------------------	------------------------------------	--

PRIJEVOZ ROBE / TRANSPORT OF GOODS

Predjeni kilometri vozila <i>Vehicle-kilometres covered</i>	101,3	118,2	118,5
Prevezeno tona robe <i>Tons of goods transported</i>	101,2	91,1	98,2
Tonski kilometri <i>Metric tons kilometres</i>	102,8	114,7	117,0

PRIJEVOZ PUTNIKA / TRANSPORT OF PASSENGERS

Predjeni kilometri vozila <i>Vehicle-kilometres covered</i>	103,1	97,6	97,7
Prevezeni putnici <i>Passengers transported</i>	98,0	105,9	104,1
Putnički kilometri <i>Passenger-kilometres</i>	103,5	91,5	93,8

GRADSKO - PRIGRADSKI PRIJEVOZ / URBAN - SUBURBAN TRANSPORT

Obim prometa po indikatorima prometa <i>Volume of transport by transport indicators</i>	III kvartal / quarter	I-III kvartali / quarters	I kvartal / quarter	II kvartal / quarter	III kvartal / quarter	I-III kvartali / quarters
	2009			2010		

Predjeni kilometri vozila, u hiljadama ¹⁾ <i>Vehicle kilometres covered, in thousands</i>	14.066	44.312	13.950*	17.601	13.424	44.975
Prevezeni putnici, u hiljadama <i>Passengers transported, in thousands</i>	36.250	119.989	41.722*	42.751	38.913	123.386

Indeksi po indikatorima prometa <i>Indices by transport indicators</i>	III 2010 II 2010	III 2010 III 2009	I - III 2010 I - III 2009
---	-----------------------------------	------------------------------------	--

Predjeni kilometri vozila <i>Vehicle kilometres covered</i>	76,3	95,4	101,5
Prevezeni putnici <i>Passengers transported</i>	91,0	107,3	102,8

1) Podatak o pređenim kilometrima vozila ne sadrži podatke za Brčko Distrikt BiH.
Data on vehicles kilometer covered does not include data for the Brcko District BiH.

*podatak je korigovan/data is corrected

ŽELJEZNIČKI PRIJEVOZ / RAILWAY TRANSPORT

Obim prometa po indikatorima prometa <i>Volume of transport by transport indicators</i>	III kvartal / quarter	I-III kvartali / quarters	I kvartal / quarter	II kvartal / quarter	III kvartal / quarter	I-III kvartali / quarters
	2009			2010		

PRIJEVOZ ROBE / GOODS TRANSPORT

Prevezeno tona robe, u hiljadama <i>Tons of goods transported, in thousands</i>	3.204	7.698	2.981	3.215	3.466	9.662
Tonski kilometri, u hiljadama <i>Metric tons kilometers, in thousands</i>	293.911	679.396	263.106	320.244	339.782	923.132

PRIJEVOZ PUTNIKA / PASSENGER TRANSPORT

Prevezeni putnici, u hiljadama <i>Passenger transported, in thousands</i>	242	677	198	235	233	666
Putnički kilometri, u hiljadama <i>Passenger-kilometers, in thousands</i>	18.185	47.082	12.126	15.473	16.593	44.192

Indeksi po indikatorima prometa <i>Indices by transport indicators</i>	III 2010 II 2010	III 2010 III 2009	I - III 2010 I - III 2009
---	---------------------	----------------------	------------------------------

PRIJEVOZ ROBE / GOODS TRANSPORT

Prevezeno tona robe <i>Tons of goods transported</i>	107,8	108,2	125,5
Tonski kilometri <i>Metric tons kilometers</i>	106,1	115,6	135,9

PRIJEVOZ PUTNIKA / PASSENGER TRANSPORT

Prevezeni putnici <i>Passenger transported</i>	99,1	96,3	98,4
Putnički kilometri <i>Passenger-kilometers</i>	107,2	91,2	93,9

ZRAČNI PROMET / AIR TRANSPORT ²⁾

Obim prometa po indikatorima prometa <i>Volume of transport by transport indicators</i>	III kvartal / quarter	I-III kvartali / quarters	I kvartal / quarter	II kvartal / quarter	III kvartal / quarter	I-III kvartali / quarters
	2009			2010		

Broj aerodromskih operacija <i>Number of aircraft movements</i>	2.766	6.716	1.718	2.119	2.592	6.429
Broj prevezenih putnika <i>Number of passengers</i>	183.398	423.382	100.479	158.394	200.326	459.199
Uzletjeli (ukrcani) <i>Embarked</i>	94.803	211.280	50.901	75.144	102.341	228.386
Sletjeli (iskrcani) <i>Disembarked</i>	88.595	210.102	49.578	83.250	97.985	230.813
Prevezeni teret, tona <i>Freight transported, tones</i>	653	1.521	413	419	530	1.362
Utovaren <i>Loaded</i>	292	526	121	129	217	467
Istovaren <i>Unloaded</i>	361	995	292	290	313	895
Prevezena pošta, tona <i>Mail transported, tones</i>	67	222	86	79	76	241
Utovarena <i>Loaded</i>	22	71	28	27	23	78
Istovarena <i>Unloaded</i>	45	151	58	52	53	163

Indeksi po indikatorima prometa <i>Indices by transport indicators</i>	III 2010 II 2010	III 2010 III 2009	I - III 2010 I - III 2009
---	---------------------	----------------------	------------------------------

Broj aerodromskih operacija <i>Aircraft movements</i>	122,3	93,7	95,7
Broj prevezenih putnika <i>Number of passengers</i>	126,5	109,2	108,5
Prevezeni teret <i>Freight transported</i>	126,5	81,2	89,5
Prevezena pošta <i>Mail transported</i>	96,2	113,4	108,6

2) **Izvor podataka:** Direkcija za civilno vazduhoplovstvo BiH

Source: Directorate of Civil Aviation of BiH

POŠTANSKI PROMET / POSTAL TRANSPORT

Obim prometa po indikatorima prometa <i>Volume of transport by transport indicators</i>	III kvartal / quarter	I-III kvartali / quarters	I kvartal / quarter	II kvartal / quarter	III kvartal / quarter	I-III kvartali / quarters
	2009			2010		

POŠTANSKE USLUGE / POSTAL SERVICES

Broj pisama - Ukupno, hiljada komada <i>Number of letters - Total, in thousands</i>	18.864	55.891	17.963	17.246	17.240	52.449
Otpremljena pisma <i>Sent letters</i>	18.280	53.727	17.029*	16.368	16.242	49.639
unutrašnji promet <i>domestic transport</i>	17.678	52.056	16.493*	15.658	15.692	47.843
međunarodni promet <i>international transport</i>	602	1.671	536	710	550	1.796
Prispjela pisma (međunarodni promet) <i>Arrived letters (international transport)</i>	584	2.164	934*	878	998	2.810

PAKETNE USLUGE / PARCEL SERVICES

Broj paketa - Ukupno, u hiljadama komada <i>Number of parcels - Total, in thousands</i>	67,3	221,1	81,5*	70,7	66,5	218,7
Otpremljeni paketi <i>Sent parcels</i>	63,2	199,0	70,4*	62,0	58,8	191,2
unutrašnji promet <i>domestic transport</i>	62,2	195,9	69,1*	60,8	57,5	187,4
međunarodni promet <i>international transport</i>	1,3	3,8	1,3	1,3	1,3	3,9
Prispjeli paketi (međunarodni promet) <i>Arrived parcels (international transport)</i>	4,1	22,2	11,2	8,7	7,7	27,6

PLATNI PROMET / PAYMENTS OPERATIONS

Broj operacija - Ukupno, u hiljadama <i>Number of operations - Total, in thousands</i>	7.780	22.898	7.796	7.780	7.835	23.411
Uplate <i>Payments</i>	6.268	18.375	6.228	6.283	6.333	18.844
Isplate <i>Pays off</i>	1.512	4.523	1.568	1.497	1.502	4.567

Indeksi po indikatorima prometa <i>Indices by transport indicators</i>	<u>III 2010</u> <u>II 2010</u>	<u>III 2010</u> <u>III 2009</u>	<u>I - III 2010</u> <u>I - III 2009</u>
---	-----------------------------------	------------------------------------	--

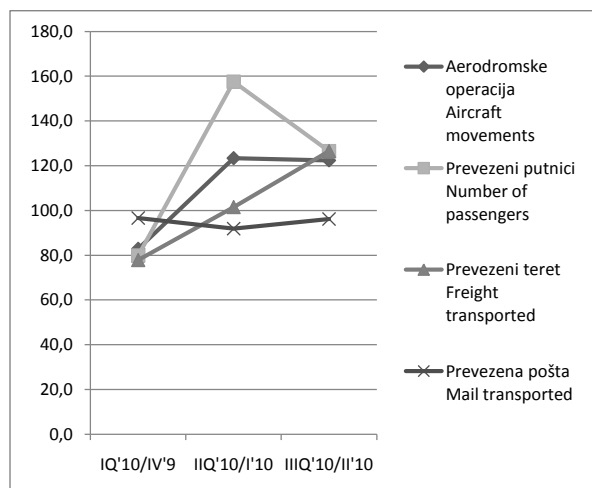
Broj pisama - Ukupno <i>Number of letters - Total</i>	100,0	91,4	93,8
Broj paketa - Ukupno <i>Number of parcels - Total</i>	94,0	98,9	98,9
Broj platnih operacija - Ukupno <i>Number of payments operations - Total</i>	100,7	100,7	102,2

* podatak je korigovan/data is corrected

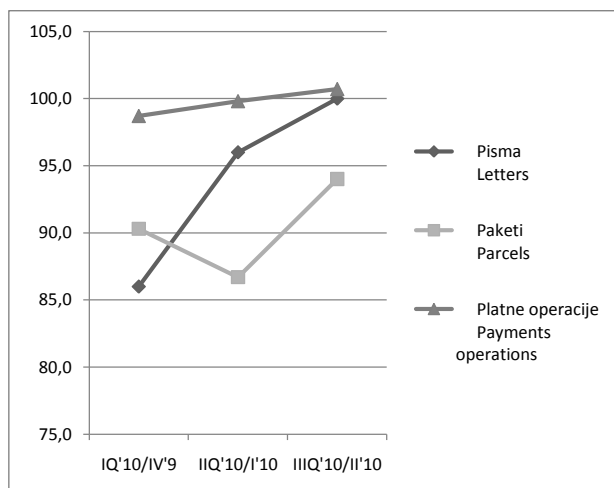
Kretanje indeksa obima prometa u zračnom prometu i poštanskom prometu po kvartalima prikazano je u grafikonima.

Trends in volume indices of transport in air and postal transport by quarters of is shown in the chart.

G.3 ZRAČNI PROMET / AIR TRANSPORT
Indeksi po kvartalima / Indices by quarters



G.4 POŠTANSKI PROMET / POSTAL TRANSPORT
Indeksi po kvartalima / Indices by quarters



Metodološka objašnjenja

Podaci o cestovnom i željezničkom prometu dobiveni su obradom mjesečnih i kvartalnih statističkih izvještaja koje su entitetski statistički zavodi prikupili. Izvještajne jedinice su preduzeća i drugi poslovni subjekti koji se bave prijevozom putnika i robe (tereta) u unutrašnjem i međunarodnom prijevozu.

Statistički podaci o zračnim operacijama, prevezenim putnicima, teretu i pošti na aerodromima u BiH preuzeti su od Direkcije za civilno vazduhoplovstvo BiH. Direkcija je ustupljene statističke podatke obradila u skladu sa statističkim programom i standardima International Civil Aviation Organization (ICAO) .

Svi podaci o broju putnika, teretu i pošti odnose se na međunarodni zračni promet, jer u BiH nema domaćeg zračnog prometa.

Podaci o poštanskom prometu dobiveni su na osnovu obrade statističkih izvještaja koje su entitetski statistički zavodi prikupili. Izvještajne jedinice su preduzeća registrovana u ovoj djelatnosti.

Definicije

Pod pojmom **prijevoz** podrazumjeva se kretanje putnika ili tereta od jednog mjesta (mjesto ukrcaja/utovara) do drugog mjesta (mjesto iskrcaja/istovara) i predstavlja mjeru aktivnosti prijevoznih preduzeća.

Unutrašnji prijevoz obuhvaća prijevoz putnika obavljen između mjesta ukrcaja i mjesta iskrcaja unutar granica naše zemlje.

Međunarodni prijevoz obuhvaća prijevoz putnika između mjesta ukrcaja u našoj zemlji i mjesta iskrcaja u inostranstvo i obratno.

Prijevoz putnika obuhvaća prevezene putnike u unutrašnjem i međunarodnom prometu.

Putnički kilometar je jedinica mjere koja predstavlja prijevoz jednog putnika na udaljenosti od jednog kilometra.

Pod robom se podrazumjeva svaka roba koja se prevozi željezničkim i cestovnim sredstvima.

Prijevoz robe iskazuje se u tonama i u tonskim kilometrima, a predstavlja zbroj svih kilometara ostvarenih u unutrašnjem i međunarodnom prijevozu.

Tonski kilometar je jedinica mjere koja predstavlja prijevoz jedne tone robe na udaljenosti od jednog kilometra.

Gradski prijevoz putnika se odnosi na rad poslovnih subjekata koji se bave prijevozom putnika u gradskim i prigradskim naseljima. Predstavljen je podacima o pređenim kilometrima vozila i prevezenim putnicima.

Pismonosne i paketne pošiljke obuhvataju broj pismonosnih pošiljaka prispjelih u međunarodnom prometu i otpremljenih u međunarodnom i unutrašnjem prometu.

Pismonosna pošiljka jest vrsta pošiljke u poštanskom prometu u koju ubrajamo obična pisma, dopisnice, tiskovine, preporučene pismonosne pošiljke i pisma s označenom vrijednošću.

Platni promet se odnosi na uplate po poštanskim uplatnicama, uplate i isplate po žiro i tekućim računima, po štednim knjižicama poštanske štedionice i poslovnih banaka i isplate po inostranim štednim knjižicama.

Notes of methodology

Data on Road and Railway transport were obtained by processing monthly and quarterly statistical data from surveys conducted by the Statistical Offices at the level of entities. The reporting units for these surveys are enterprises and other business subjects engaged in domestic and international transport of passengers and goods.

Statistical data on aircraft movements, number of passengers, freight and mail transported on airports in BiH are taken from Directorate of civil aviation of BiH. Directorate processed supplied statistical data in accordance with International Civil Aviation Organization (ICAO) statistical programme and standards.

All data on number of passengers, freight and mail are related to international air transport. BiH has no domestic air transport

Data on postal transport were obtained by processing statistical data from surveys conducted by the Statistical Offices at the level of entities. The reporting units for these surveys are enterprises registered in this activity.

Definitions

Considered as transport is movement of passengers or cargo from one place (loading place) to another place (unloading place) and representing the operation of transport enterprises.

Domestic transport implies transport of passenger between places of loading and unloading within the borders of the country.

International transport implies transport of passengers between the place of loading in our country and the place of unloading abroad, or the other way round.

Transport of passengers include transported passengers into domestic and international transport.

Passenger kilometre is a unit of measure which refers to transport of one passenger at the distance of one kilometre.

Goods are any goods transported by railway or road transport means.

Goods transport is given in tons and ton kilometres, and it is the sum of all kilometres realized in domestic and international transport.

Ton kilometre is a unit of measure which refers to transport of one tone of goods at the distance of one kilometre.

Urban transport of passengers refers to the work of economic entities engaged in transport of passengers in urban and suburban settlements. Data on urban/suburban transport is represented by the indicators of kilometers covered and passenger transported.

Letter and parcel postal services include the number of letters arrived in domestic traffic, as well as those arrived and sent in international traffic.

Postal letter is a type of item in the postal traffic, which includes letters, postcards, blanks, registered mail and insured letters

Payment operations refer to payments by postal money order, payments by giro and current accounts, by saving books of postal savings and business banks, and payments by foreign saving books

Izdaje i štampa Agencija za statistiku BiH

Published and printed by the Agency for Statistics of the Bosnia and Herzegovina

71000 Sarajevo, Zelenih beretki 26, telefon/phone: (33) 220 626, faks/fax: (33) 220 622

Odgovara direktor, Zdenko Milinović.

Person responsible: Zdenko Milinović, Director General

Priredili: Nataša Lučić, Mia Šimović

Prepared by: Ms. Nataša Lučić, Ms. Mia Šimović

Tiraž: 100 primjeraka

100 copies printed

Elektronska pošta / E-mail: bhas@bhas.ba

Internetske stranice / Web site: <http://www.bhas.ba>

Podaci iz ovog saopštenja objavljuju se i na internetu.

First Release data are also published on the Internet