

STATISTIČKI BILTEN
СТАТИСТИЧКИ БИЛТЕН
STATISTICAL BULLETIN

4

2004



Izdavac: Agencija za statistiku Bosne i Hercegovine, Bosna i Hercegovina,
Sarajevo, Trg Bosne i Hercegovine 1
Publisher: Agency for Statistics of Bosnia and Herzegovina, Bosnia and Herzegovina,
Sarajevo, Trg Bosne i Hercegovine 1

Odgovara: Zdenko Milinovic, direktor
Editor: Mr Zdenko Milinovic, director

Tabele pripremili: Nora Selimovic, ekspert
Jelena Miovcic, ekspert
Jasmina Vidovic, ekspert
Milenko Stojanovic, M.Sci
Sahrudin Sarajcic, M.Sc
Fuad Bahtanovic, ekspert

Tables prepared by: Ms Nora Selimovic, an expert in statistics
Ms Jelena Miovcic, an expert in statistics
Ms Jasmina Vidovic, an expert in statistics
Mr Milenko Stojanovic, M.Sci
Mr Sahrudin Sarajcic, M.Sc
Mr Fuad Bahtanovic, an expert in statistics

Izrada grafikona: Fuad Bahtanovic
Jasmina Vidovic
Milenko Stojanovic, M.Sci
Sahrudin Sarajcic, M.Sc

Graphs prepared by: Mr Fuad Bahtanovic
Ms Jasmina Vidovic
Mr Milenko Stojanovic, M.Sci
Mr Sahrudin Sarajcic, M.Sc

Tehnicki urednik: Milenko Stojanovic, M.Sci
Design and pre-press: Milenko Stojanovic, M.Sci

Tisak: ?ARKA Press?, doo Sarajevo
Printed by: ?ARKA Press?, doo Sarajevo

Molimo korisnike Biltena da prilikom upotrebe podataka navedu izvor

Users are kindly requested to mention data source

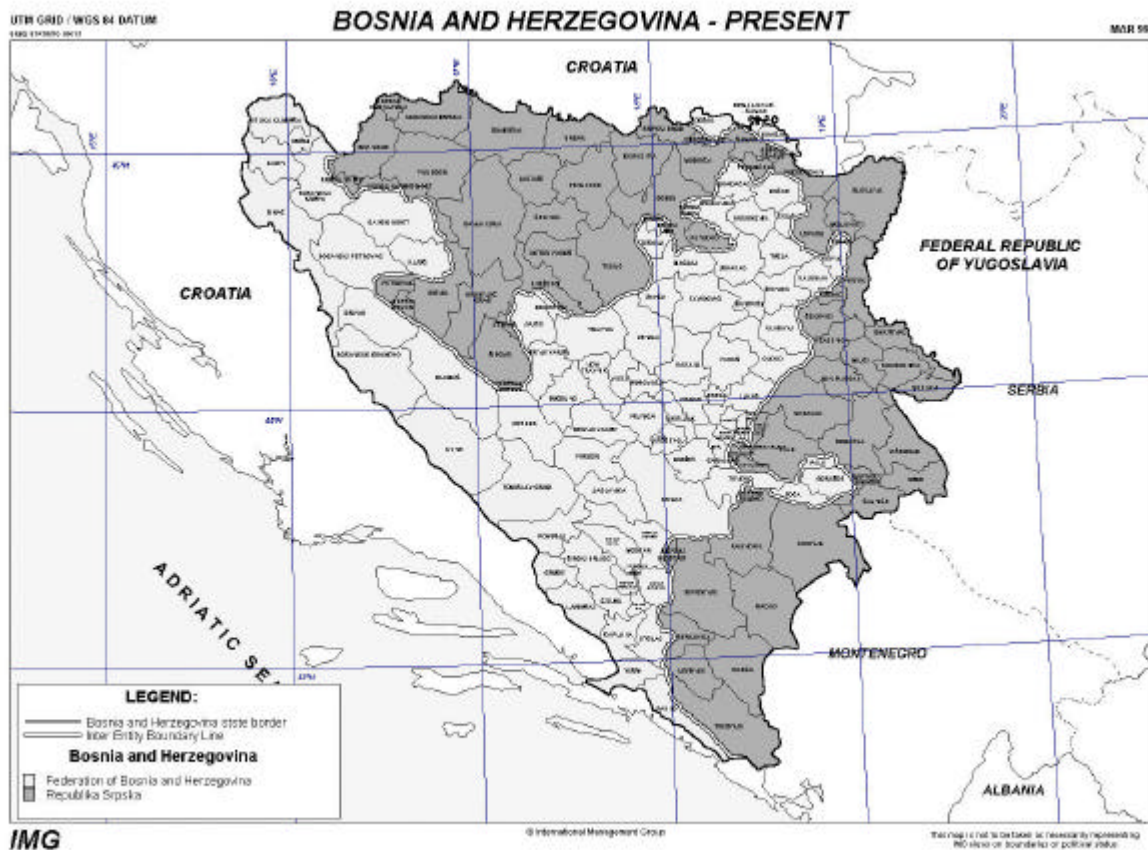
BOSNA I HERCEGOVINA
AGENCIJA ZA STATISTIKU BOSNE I HERCEGOVINE

BOSNIA AND HERZEGOVINA
AGENCY FOR STATISTICS OF BOSNIA AND HERZEGOVINA

STATISTICKI BILTEN
STATISTICAL BULLETIN

4

Sarajevo, decembar/prosinac 2004. godine



*) Objavljeno uz suglasnost International Management Group / Published with agreeable to International Management Group

OPCI PODACI O BOSNI I HERCEGOVINI

Službeni naziv: Bosna i Hercegovina (B i H)

Geografska lokacija: Bosna i Hercegovina se nalazi na zapadnom dijelu Balkanskog poluotoka

Pogranične zemlje: Srbija i Crna Gora na istoku, Republika Hrvatska na sjeveru, zapadu i jugu.

Administrativna podjela: BiH je podjeljena na dva entiteta: Federaciju Bosne i Hercegovine (F BiH) i Republiku Srpsku (RS) i distrikt Brcko.

Entitetska struktura: FBiH je administrativno podjeljena na 10 kantona-Županija. Kantoni-Županije su podjeljeni na općine. Na području F BiH je 79 općina.

Republika Srpska je administrativno podjeljena na 64 općine. Grad Brcko je zasebna administrativna jedinica - Distrikt.

Površina:

Bosna i Hercegovina ukupno pokriva

	51 209,2 km ²
Kopno	51 197 km ²
More	12,2 km ²

Klima: Pretežno kontinentalna, mediteranska na jugu

Broj stanovnika: Procjena prisutnog stanovništva (30.06.2003) 3.832.301

Struktura stanovnika: Bošnjaci, Hrvati i Srbi i pripadnici ostalih naroda

Glavni grad: Sarajevo (F BiH-Sarajevo, RS-Banja Luka)

Službeni jezici: Bosanski, Hrvatski i Srpski I dva pisma (latinica i cirilica).

Zvanična valuta: Konvertibilna marka (KM), (1KM = 0,511292 Euro)

GENERAL DATA ABOUT BOSNIA AND HERZEGOVINA

Official name: Bosnia and Herzegovina (BiH)

Geographical location: Bosnia and Herzegovina is situated in the west part of the Balkan Peninsula

Border countries: Serbia and Montenegro on the east, Republic of Croatia on the north, west and south

Administrative distribution: B&H is divided on two entities: Federation of Bosnia and Herzegovina (F B&H) and Republica Srpska (RS) and district Brcko

Entity's structure: FB&H is administratively divided on 10 cantons/districts. These cantons/districts are divided into municipalities. There are 84 municipalities in Fed. BiH. The Republika Srpska is administratively divided into 64 municipalities. The city Brcko is a separated administrative unit -District.

Surface: Bosnia and Herzegovina cover totally

	51 209,2 km ²
Land	51 197 km ²
Inland	12,2 km ²

Climate: In the majority continental, mediterranean on south

Number of habitants: Estimation of current population (30.06.2003) 3.832.301

The structure of population: Bosniaks, Croats, Serbs and other participants of others nations

Capital city: Sarajevo (FB&H-Sarajevo, RS-Banja Luka)

Official languages: Bosnian, Croatian and Serbian and two alphabets (Latin and Cyrillic).

Official value: Konvertible mark (KM), (1KM = 0,511292 Euro)

S A D R Ž A J
C O N T E N T S

	Str.
	Page
U V O D	11
<i>INTRODUCTION</i>	
KRATICE I ZNAKOVI	14
<i>ABBREVIATIONS AND SYMBOLS</i>	
1.PLACE	15
<i>WAGES</i>	
2. ŠUMARSTVO	22
<i>FORESTRY</i>	
3. GRAĐEVINARSTVO	55
<i>CONSTRUCTION.</i>	
4. PREVOZ I VEZE	71
<i>TRANSPORT AND COMMUNICATIONS</i>	
5. TURIZAM I UGOSTITELJSTVO	93
<i>TOURISM, HOTELS AND RESTAURANTS</i>	
6. STANOVNIŠTVO	109
<i>POPULATION</i>	

SADRŽAJ TABELA I GRAFOVA CONTENTS TABLES AND GRAPHICS

	<i>Strana Page</i>
1. PLATE	
<i>NJAGES</i>	
1-1.1. Prosječne bruto plate u KM (BiH)	18
<i>Average gross njages in KM (B&H)</i>	
1-1.2. Prosječne neto plate u KM (BiH)	18
<i>Average net njages in KM (B&H)</i>	
1 – Grafikon 1: Prosječne bruto plate za 1998-2003	18
<i>Graph 1: Average gross njages 1998-2000 and I-IX 2001</i>	
Grafikon 2: Prosječne neto plate za 1998-2003	19
<i>Graph 2: Average net njages 1998-2000 and I-IX 2001</i>	
2.ŠUMARSTVO	
<i>FORESTRY</i>	
2-1.1. Proizvodnja, prodaja i zalihe šumskih proizvoda prema asortimanu (BiH) .	24
<i>Production, sales and stocks forests products by type (B&H)</i>	
2-1.2. Indeksi proizvodnje šumskih proizvoda prema asortimanu (BiH)	30
<i>Indices of production of forests assortments</i>	
1 – Grafikon 1: Ukupna proizvodnja šumskih sortimenata u BiH	33
<i>Graph 1: Total production of forest assortments in BiH</i>	
2-2.1. Proizvodnja, prodaja i zalihe šumskih proizvoda prema asortimanu (Fed)	34
<i>Production, sales and stocks forests products by type (Fed)</i>	
2-2.2. Indeksi proizvodnje šumskih proizvoda prema asortimanu (Fed BiH)	40
<i>Indices of production of forests assortments</i>	
Grafikon 2: Ukupna proizvodnja šumskih sortimenata u Fed BiH.....	43
<i>Graph 2: Total production of forest assortments in Fed BiH</i>	
2-3.1. Proizvodnja, prodaja i zalihe šumskih proizvoda prema asortimanu (RS).....	44
<i>Production, sales and stocks forests products by type (RS)</i>	
2-3.2. Indeksi proizvodnje šumskih proizvoda prema asortimanu (RS)	50
<i>Indices of production of forests assortments</i>	
Grafikon 3: Ukupna proizvodnja šumskih sortimenata u RS.....	53
<i>Graph 3: Total production of forest assortments in RS</i>	
3. GRAĐEVINARSTVO	
<i>CONSTRUCTION</i>	
3-1.1. Vrijednost izvršenih građevinskih radova, izvršeni efektivni sati i broj radnika (BiH)	58
<i>Indices of value of completed construction njorks, completed effective hours and workers (B&H)</i>	
3 – Grafikon 1: Broj radnika na gradilištima BiH.....	58
<i>Graph 1: Number of employees on constr.site BiH</i>	
Grafikon 2: Vrijednost izvršenih građevinskih radova u BiH.....	59
<i>Graph 2: Value of employees njork BiH</i>	
3-1.2. Vrijednost izvršenih građevinskih radova, izvršeni efektivni sati i broj radnika (BiH)	60
<i>Value of completed construction njorks, completed effective hours and workers (B&H)</i>	
3- 2.1.Vrijednost izvršenih građevinskih radova, izvršeni efektivni sati i broj radnika (Fed)	61
<i>Value of completed construction njorks, completed effective hours and workers (Fed)</i>	
3- 2.2. Indeksi vrijednost izvršenih građevinskih radova, izvršeni efektivni sati i broj radnika (Fed)	62
<i>Indices of value of completed construction njorks, completed effective hours and workers (Fed)</i>	
Grafikon 3: Broj radnika na gradilištima Fed BiH.....	62
<i>Graph 3: Number of employees on constr.site Fed BiH</i>	
Grafikon 4: Vrijednost izvršenih građevinskih radova u Fed BiH.....	63
<i>Graph 4: Value of employees njork Fed BiH</i>	
3- 3.1. Indeksi vrijednost izvršenih građevinskih radova, izvršeni efektivni sati i broj radnika (RS)	64
<i>Indices of value of completed construction njorks, completed effective hours and workers (RS)</i>	
Grafikon 5: Broj radnika na gradilištima RS.....	64
<i>Graph 5: Number of employees on constr.site RS</i>	
Grafikon 6: Vrijednost izvršenih građevinskih radova u RS.....	65
<i>Graph 6: Value of employees njork RS</i>	
3-3.2. Vrijednost izvršenih građevinskih radova, izvršeni efektivni sati i broj radnika (RS)	66
<i>Value of completed construction njorks, completed effective hours and njorkers (RS)</i>	
3-4.1. Vrijednost izvršenih građevinskih radova, izvršeni efektivni sati i broj radnika (Distrikt Brčko)	67
<i>Value of completed construction njorks, completed effective hours and workers (District Brcko)</i>	
3-4.2. Indeksi vrijednost izvršenih građevinskih radova, izvršeni efektivni sati i broj radnika (Distrikt Brčko)	68
<i>Indices of value of completed construction works, completed effective hours and workers (District Brcko)</i>	
Grafikon 7: Broj radnika na gradilištima RS.....	68
<i>Graph 7: Number of employees on constr.site RS</i>	
Grafikon 8: Vrijednost izvršenih građevinskih radova u RS.....	69
<i>Graph 8: Value of employees work RS</i>	

4. PREVOZ I VEZE

TRANSPORT AND COMMUNICATION

4 – 1.1. Drumski, gradski i željeznički prevoz i veze (BiH)	74
<i>Highway, urban and railway transport and communication services (B&H)</i>	
4 – 1.2. Indeksi u saobraćaju (BiH)	78
<i>Indices of highway, urban and railway transport and communication services (B&H)</i>	
4 – 2.1. Drumski, gradski i željeznički prevoz i veze (Fed)	80
<i>Highway, urban and railway transport and communication services (Fed)</i>	
4 – 2.2. Indeksi u saobraćaju (Fed)	84
<i>Indices of highway, urban and railway transport and communication services (Fed)</i>	
4 – 3.1. Drumski, gradski i željeznički prevoz i veze (RS)	86
<i>Highway, urban and railway transport and communication services (RS)</i>	
4 – 3.2. Indeksi u saobraćaju (RS)	91
<i>Indices of highway, urban and railway transport and communication services (RS)</i>	

5. TURIZAM I UGOSTITELJSTVO

TOURISM, HOTELS AND RESTAURANTS

5 – 1.1. Dolasci turista po zemlji prebivališta (BiH)	96
<i>Tourist arrivals by country of residence (B&H)</i>	
5 - Grafikon 1: Dolasci turista BiH.....	97
<i>Graph 1: Tourist arrivals B&H</i>	
5 – 1.2. Nocenja turista po zemlji prebivališta (BiH)	98
<i>Tourist night by country of residence (B&H)</i>	
Grafikon 2: Nocenja turista BiH.....	99
<i>Graph 2: Number of tourist nights BiH</i>	
5 – 2.1. Dolasci turista po zemlji prebivališta (Fed).....	100
<i>Tourist arrivals by country of residence (Fed)</i>	
Grafikon 3: Dolasci turista Fed BiH.....	101
<i>Graph 3: Tourist arrivals Fed B&H</i>	
5 – 2.2. Nocenja turista po zemlji prebivališta (Fed).....	102
<i>Tourist night by country of residence (Fed)</i>	
Grafikon 4: Nocenja turista Fed BiH.....	103
<i>Graph 4: Number of tourist nights Fed BiH</i>	
5 – 3.1. Dolasci turista po zemlji prebivališta (RS).....	104
<i>Tourist arrivals by country of residence (RS)</i>	
Grafikon 5: Dolasci turista RS.....	105
<i>Graph 5: Tourist arrivals RS</i>	
5 – 3.2. Nocenja turista po zemlji prebivališta (RS).....	106
<i>Tourist night by country of residence (RS)</i>	
Grafikon 6: Nocenja turista RS.....	107
<i>Graph 6: Number of tourist nights RS</i>	

6. STANOVNIŠTVO

POPULATION

6 – 1.1. Prirodno kretanje stanovništva po mjesecima (BiH) – prethodni podaci	112
<i>Natural demographic trends (B&H) – previous dates</i>	
6 – 2.1. Prirodno kretanje stanovništva po mjesecima (Fed) – prethodni podaci	112
<i>Natural demographic trends (Fed) – previous dates</i>	
6 – 3.1. Prirodno kretanje stanovništva po mjesecima (RS) – prethodni podaci	113
<i>Natural demographic trends (RS) – previous dates</i>	

U V O D
INTRODUCTION

U V O D

Podaci za BiH publikovani u ovom Biltenu predstavljaju realizaciju Programa rada Agencije za statistiku Bosne i Hercegovine koji je usvojen na sjednici Vijeća ministara BiH i uskladen je sa programima statističkih istraživanja Federalnog zavoda za statistiku Federacije BiH i Republickog zavoda za statistiku Republike Srpske i zahtjevima ministarstava u sklopu Vijeća ministara i Centralne banke BiH.

Prema Zakonu o statistici BiH ("Službeni glasnik BiH", broj 34/2002) Agencija za statistiku BiH nadležna je da u skladu sa međunarodno prihvaćenom metodologijom izrađuje i objavljuje statističke podatke za Bosnu i Hercegovinu, a na osnovu podataka zavoda za statistiku entiteta, distrikta Brčko i drugih institucija na nivou BiH.

Za ovu publikaciju Agencija za statistiku BiH obezbijedila je podatke za one oblasti statističkih istraživanja koja se provode po istoj metodologiji. Aktivnosti na usklađivanju metodologija za druge oblasti statističkih istraživanja su trajan zadatak Agencije i zavoda za statistiku entiteta, distrikta Brčko i drugih institucija.

U narednom periodu bit ćemo u mogućnosti da publikujemo podatke za više oblasti jer se stvaraju uslovi za to (sporovođenje ankete o budžetu domaćinstva i dr.).

Sve sugestije korisnika statističkih podataka koje vode daljem poboljšanju ove publikacije sa zadovoljstvom ćemo prihvatiti.

Sarajevo. Decembar/Prosinac 2004.

Direktor

INTRODUCTION

The data for B&H published in this Bulletin represent the implementation results of the Working programme of the Agency for Statistics of Bosnia and Herzegovina, which was accepted at the session of the Council of Ministers of B&H, and harmonised with the programs of the Federation of B&H and of the Republika Srpska Statistical Offices, as well as with requirements of Council of Ministers of B&H and Central Bank of B&H.

According to the Statistical Law of Bosnia and Herzegovina (“Official Gazette B&H”, number 34/2002) the Agency of Statistics of Bosnia and Herzegovina is in charge “of the production and publishing, of aggregated statistics for Bosnia and Herzegovina in accordance with the International accepted methodology, based on data submitted by the Entity Statistical Institutes”.

For this publication the Agency for Statistics of Bosnia and Herzegovina provides data for statistical areas in which the same methodology has been used. The harmonisation of methodologies of other statistical areas is the lengthy task of this Agency and of the Statistical Institutes of the Entities, as well as Statistical Office of District Brcko and other institutions.

Soon we will be able to publish data on some more areas of statistics, because current situation is providing good conditions for doing so (preparations for carrying out the households budget survey has already started, as well as some other activities).

All suggestions by users of statistical data, which lead to further improvement of this publication, will be gratefully accepted.

Sarajevo, December 2004.

Director

KRATICE I ZNAKOVI

U statistickim tabelama primjenjeni su slijedeći znakovi:

-	nema pojave
...	ne raspolaže se podatkom
0	podatak je manji od 0,5 od date jedinice mjere
()	nepotpun, nedovoljno provjeren, odnosno procijenjen podatak
*	ispravljen podatak
F	prosjeak
AV	prosjeak
1)	oznaka za napomenu ispod tabele
Δ	promjena
(BiH)	statistički podaci na nivou Bosne i Hercegovine
(Fed)	statistički podaci na nivou Federacije
(RS)	statistički podaci na nivou Republike Srpske
CV	koeficijent varijacije
KM	konvertibilna marka, zvani~na valuta u BiH
JKD	Jugoslovenska klasifikacija ekonomskih aktivnosti
EUROSTAT	Statistički ured Evropske Unije
CIF	(<i>Cost, Insurance, Freight</i>) troškovi, osiguranje, prevoz-vrijednost za uvoz
FOB	(<i>Free On Board</i>) franko do broda-vrijednost za izvoz
SITC	(<i>Standard International Trade Classification</i>) standardna medunarodna klasifikacija trgovine
USD	americki dolar

ABBREVIATIONS AND SYMBOLS

In statistical tables we have following signs

-	no entry
...	data not available
0	value is less than 0,5 of the unit of measure being used
()	uncomplete, not reliable, estimated data
*	corrected data
F	average
AV	average
1)	indicates note beneath table
Δ	change
(BiH)	state level statistics
(Fed)	Federation level statistics
(RS)	Republic Srpska level statistics
CV	coefficient of variation
KM	convertible currency (mark), official currency of B&H
JKD	Yugoslavian classification of economic activities

***1 PLACE
WAGES***

STATISTIKA RADA

Metodološka objašnjenja

Cilj statistike zaposlenosti, nezaposlenosti i placa, koja je važna oblast društvene statistike, je da pruži informacije o tržištu rada i odgovarajućim pitanjima putem administrativnih informacija, pojedinačnih intervjua ili drugih načina putem kojih će se dobiti informacije o ovoj materiji.

Cilj statistike rada je da prikupi podatke o radnom stanovništvu (15 godina i više) i da ih razvrsta u **tri uzajamno isključive grupe**: zaposlene osobe, nezaposlene osobe i neaktivne osobe. Ukrštanjem drugih informacija (ukupan broj stanovništva, starost, spol, prethodni posao, naredni posao itd), zajedno sa ovim moguće je napraviti interesantne (zajedničke) indikatore. Dobar primjer je Europska Anketa radne snage, koju provode zemlje članice EU i koju koordinira EUROSTAT od 1973.

Definicije zaposlenosti i nezaposlenosti korištene u zemljama EU, u skladu su sa usvojenim na 13. Međunarodnoj konferenciji statističara rada koja je održana u Ženevi 1982. godine.

PLACE

Metodološka objašnjenja

Prosječne mjesečne bruto i neto plate po zaposlenom dobivene su na temelju mjesečnog statističkog istraživanja o zaposlenima i placama. Prema metodologiji koja se koristi u BiH nema razlike između poslodavca i uposlenih radnika. Podaci o bruto i neto placama su dostupni. U podacima o prosječnoj bruto i neto placi nisu obuhvaćene isplate uposlenih u Ministarstvu obrane i Ministarstvu unutarnjih poslova.

Mjesečna neto plata obuhvaća plate zaposlenih za izvršene poslove na temelju redovnog radnog odnosa i naknada za godišnji odmor, bolovanja do 30 dana, državnih praznika, plaćenog dopusta, čekanja i zastoja bez krivnje uposlenog. Nisu obuhvaćena primanja koja terete materijalne troškove, naknade za bolovanja preko 30 dana i primanja na temelju ugovora o djelu.

Mjesečna bruto plata obuhvaća sve vrste neto isplata na temelju radnog odnosa i zakonom propisanih obveznih izdvajanja, doprinosa i poreza.

Prosječna bruto i neto plata po uposlenom, izračunava se dijeljenjem ukupnih isplata sa brojem uposlenih koji su primili platu.

Ovdje postoji jedna **specifična poteškoca**: velike su neredovnosti u isplatama, a statistika podrazumjeva plaćanja u mjesecu, a ne mjesečno ugovorene, uobičajene ili prosječne plate. To znači da u toku jednog mjeseca, na primjer, jedna osoba nije primila ni jednu KM, a u narednom mjesecu ta osoba može primiti i dvije plate.

STATISTICS ON LABOUR FORCE

The objective of statistics on employment and wages, an important branch of social statistics, is to provide information on the labour market and related issues by means of administrative data, personal interviews or other relevant sources of data.

The main statistical objective of the Labour Force data is to divide the population of working age (15 years and above) into three mutually exclusive groups: persons in employment, persons unemployed and inactive persons. Within these groups other characteristics (total population, age, sex, previous job, second job, etc) are identified to provide key indicators. The European Labour Force Survey for example, has been carried out by the Member States of the EU and co-ordinated by EUROSTAT since 1973.

The definitions of employment and unemployment used in EU countries, closely follow those adopted by the 13th International Conference of Labour Statisticians, in 1982.

WAGES

Notes on Methodology

Data on average monthly gross and net salaries (wages) were obtained on the basis of monthly reports of the enterprises and not enterprises. According to the methodology currently used in B&H, there is no distinction made between employers and employees. Data related to net wages and gross wages are available. Data related to net and gross salaries, including wages of the employers in the Ministry of Defence and the Ministry of Foreign Affairs, are not.

Net monthly earning includes the income of a person in employment earned for work during regular working hours and some additional income, annual leave, sick pay up to 30 days, public holidays, paid leave, redundancy and work curtailment payments which are involuntary and non prejudicial.

Gross monthly earning includes all kinds of the net payments derived from on permanent employment plus participation, co-payments, contributions and taxes, as prescribed by law.

Average net and gross earning per one person in employment are calculated by dividing the total of payments by the number of persons in paid employment.

One principal difficulty exists: there is great irregularity in payment while the statistics reflect pay in each individual month and not monthly contractual, usual or average salaries. This means that in one month, for instance, one person may receive zero KM and in the next month twice his normal salary.

NIVO OBRADJE BOSNA I HERCEGOVINA

1 - 1.1 Prosjecne bruto place

	I-2004	II-2004	III-2004	IV-2004	V-2004	VI-2004	VII-2004	VIII-2004
RS	599	618	616	624	637	649	650	660
FBiH	750	752	759	779	787	790	786	788
BiH	734	733	732	739	749	754	750	755

1 - 1.2 Prosjecne neto place

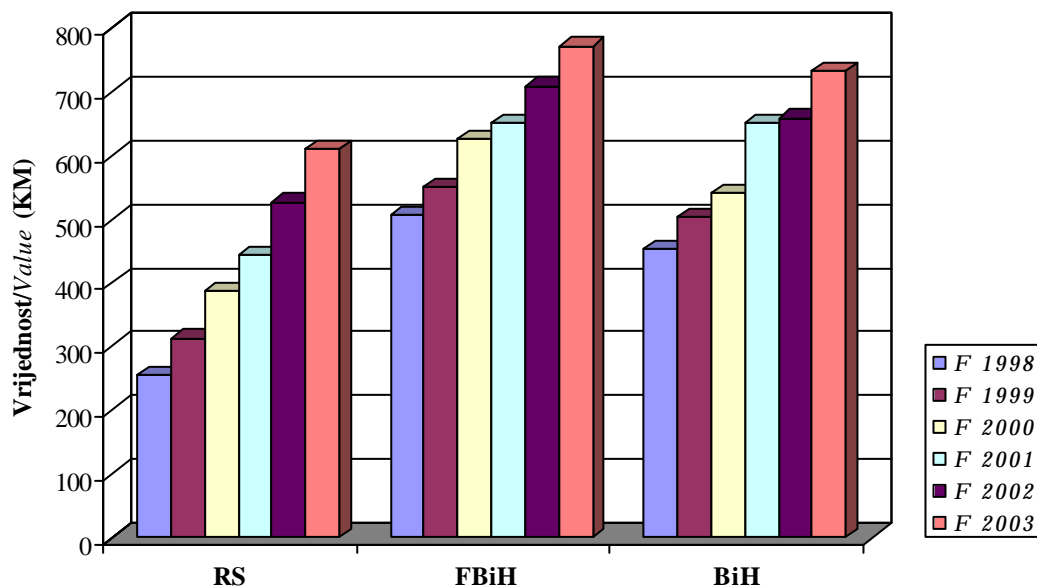
	I-2004	II-2004	III-2004	IV-2004	V-2004	VI-2004	VII-2004	VIII-2004
RS	394	406	405	410	418	427	427	434
FBiH	510	512	516	530	535	538	535	536
BiH	496	495	494	499	506	509	506	509

Grafikon 1:

Graph 1:

Prosjecne bruto place za 1998-2003 godinu

Average gross wages 1998-2003



1 - 1.1 Average gross wages

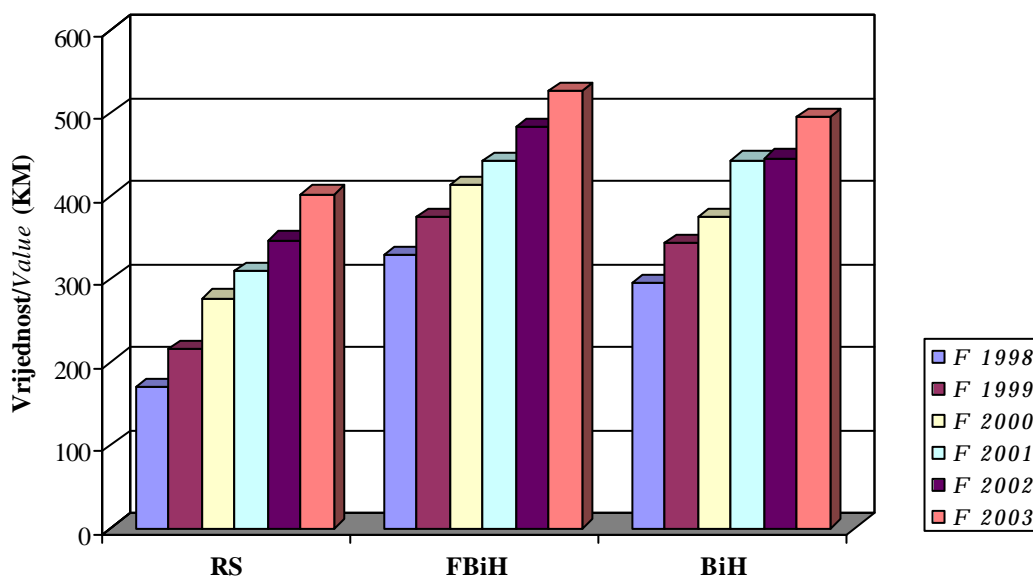
IX-2004	F 1998	F 1999	F 2000	F 2001	F 2002	F 2003
643	256	314	381	444	527	576
785	507	551	607	653	710	771
750	454	503	539	598	660	717

1 - 1.2 Average net wages

IX-2004	F 1998	F 1999	F 2000	F 2001	F 2002	F 2003
423	170	216	275	309	347	379
534	329	374	413	444	483	524
506	296	343	372	408	446	484

Grafikon 2:
Graph 2:

Prosječne neto plate za 1998-2003 godinu
Average net wages 1998-2003



2. ŠUMARSTVO
FORESTRY

ŠUMARSTVO

Metodološka objašnjenja

Podaci o proizvodnji, prodaji i zalihama šumskih sortimenata, obrađeni u ovom biltenu, urađeni su na osnovu rezultata obrade entitetskih zavoda za statistiku iz redovnog mjesečnog istraživanja. Mjesečne izvještaje podnose sva preduzeća koja se bave stalnom proizvodnjom šumskih sortimenata iz šuma u državnom vlasništvu, bez obzira da li im je iskorištavanje šuma osnovna ili sporedna djelatnost.

Stoga je podacima obuhvaćena samo proizvodnja, prodaja i zalihe šumskih sortimenata iz državnih šuma, dok sortimenti proizvedeni iz šuma na koje postoji pravo vlasništva nisu uključeni.

Podaci se daju na osnovu izvršenog premjera šumskih sortimenata. iskazane količine predstavljaju neto drvenu masu sortimenta izraženu u kubnim metrima.

Industrijsko drvo je ono drvo koje ima povoljna fizička i hemijska svojstva za daljnju industrijsku upotrebu i preradu. Industrijsko drvo razvrstava se u dvije grupe: industrijsko drvo za mehaničku preradu (trupci, drvo za ploče i sl.) i industrijsko drvo za hemijsku preradu (celulozno drvo, drvo za suhu destilaciju i sl.).

Tehničko drvo namijenjeno je za razne tehničke svrhe (rudničko drvo, stubovi za elektro i telefonske vodove i sl.), te njegova fizička i hemijska svojstva upravo odgovaraju toj namjeni.

Orevno drvo je namijenjeno neposredno za ogrev ili proizvodnju drvenog uglja.

FORESTRY

Notes on Methodology

Data on production, sales and stock of forestry products in this bulletin were prepared from regular monthly surveys processed by the entity statistical offices.

All companies engaged in permanent production of forestry items from state forests submit monthly statistical reports regardless of whether the exploitation of forests is a basic or a secondary activity for them.

Therefore, this data covers only production, sales and stock of forestry products from state forests, while forestry products, which are produced by private forestry, are not included.

Quantities are given in net wood of mass product which are measured in cubic metres.

Industrial wood is one whose properties allow for further industrial use and processing.

Industrial wood is classified into two groups: industrial wood for mechanical processing (trunks, wood for plates etc.) and industrial wood for chemical processing (cellulose fibre, wood for dry distillation).

Technical wood is for other technical uses (mining timbers, poles for electric and telephone cables), and its physical and chemical features are appropriate to these uses.

The fuel wood is for burning or the production of charcoal.

NIVO OBRADE BOSNA I HERCEGOVINA

2 - 1.1 Proizvodnja, prodaja i zalihe šumskih proizvoda prema asortimanu

m3

PROIZVODNJA	2002	2003	01 2004	02 2004	03 2004	04 2004
UKUPNO	4.237.919	4.099.867	134.460	224.530	277.225	314.557
CETINJACA	2.107.967	1.930.515	67.179	93.113	120.034	141.184
LISTACA	2.129.274	2.168.552	67.147	131.329	157.078	173.079
Trupci cetinjaca	1.711.163	1.549.232	57.606	77.773	98.383	112.101
Rudnicko drvo cetinjaca	196.940	171.225	5.886	8.049	10.775	12.657
Ostalo dugo drvo cetinjaca	54.238	64.645	103	1.241	1.869	2.623
Prostorno drvo cetinjaca	115.338	119.724	2.096	4.233	6.089	10.701
Trupci listaca	930.689	898.933	36.421	67.727	78.488	76.669
Rudnicko drvo listaca	17.384	18.072	801	871	863	1.266
Ostalo dugo drvo listaca	37.167	35.247	864	144	85	149
Prostorno drvo listaca	17.780	23.936	1.099	1.527	1.447	1.517
Ogrijevno drvo cetinjaca	30.125	25.652	1.488	1.817	2.534	2.852
Ogrijevno drvo listaca	1.126.245	1.188.648	27.314	60.460	75.655	93.226
Ostalo grubo obradeno drvo	850	4.553	782	688	1.037	796

2 - 1.1 Production, sales and stocks of forest products by type

m3

05 2004	06 2004	07 2004	08 2004	09 2004	<u>01-09.2004</u> <u>01-09.2003</u>	PRODUCTION
366.944	401.177	369.914	465.415	473.474	98,82	TOTAL
184.144	213.743	195.319	224.641	201.354	95,29	CONIFEROUS
182.728	187.361	174.573	240.758	272.018	102,25	BROAD LEAF
143.145	161.422	152.843	171.145	145.473	91,64	Logs Coniferous
16.312	19.134	15.871	18.048	16.859	90,57	Mining wood, coniferous
5.749	7.001	6.779	9.096	9.146	98,16	Other long coniferous wood
16.242	21.528	16.514	23.388	26.552	139,42	Cord coniferous wood
79.267	77.508	68.465	80.416	79.355	98,64	Logs broadleaf
1.575	1.323	1.223	1.569	1.532	84,34	Mining wood, broadleaf
53	19	41	131	160	6,17	Other long broadleaf wood
3.051	1.076	1.749	2.606	2.032	92,75	Cord broadleaf wood
2.496	4.580	3.312	2.964	3.323	144,53	Coniferous firewood
98.517	107.262	102.925	155.725	188.543	108,43	Broadleaf firewood
537	324	192	327	498	193,83	Other roughly worked wood

NIVO OBRADJE BOSNA I HERCEGOVINA

**2 - 1.1 Proizvodnja, prodaja i zalihe šumskih proizvoda prema asortimanu
(nastavak)**

m3

PRODAJA	2002	2003	01 2004	02 2004	03 2004	04 2004
UKUPNO	4.241.335	4.121.275	94.735	172.635	243.809	320.756
CETINJACA	2.133.465	1.939.418	40.710	74.330	105.528	152.761
LISTACA	2.106.015	2.177.991	53.888	98.215	138.037	167.676
Trupci cetinjaca	1.712.098	1.556.273	36.411	65.863	89.127	125.659
Rudnicko drvo cetinjaca	167.263	142.386	2.140	3.785	7.635	12.389
Ostalo dugo drvo cetinjaca	57.525	66.104	109	580	1.755	2.970
Prostorno drvo cetinjaca	176.365	152.079	780	2.646	4.846	9.152
Trupci listaca	901.662	882.468	35.691	60.274	72.882	84.775
Rudnicko drvo listaca	12.767	14.699	436	496	1.289	768
Ostalo dugo drvo listaca	32.900	31.085	589	986	1.261	90
Prostorno drvo listaca	18.771	30.107	1.188	1.067	800	1.826
Ogrijevno drvo cetinjaca	20.051	22.539	1.270	1.456	2.165	2.591
Ogrijevno drvo listaca	1.139.915	1.216.557	15.322	34.813	60.976	79.787
Ostalo grubo obradeno drvo	2.018	6.978	799	669	1.073	749

2 - 1.1 Production, sales and stocks of forest products by type
(continued)

m3

05 2004	06 2004	07 2004	08 2004	09 2004	<u>01-09.2004</u> <u>01-09.2003</u>	SALES
356.865	412.027	396.929	496.262	509.374	97,46	TOTAL
167.314	199.360	200.392	216.618	207.093	91,89	CONIFEROUS
189.456	212.522	196.485	279.256	301.362	102,67	BROAD LEAF
131.817	153.847	156.886	167.069	154.485	89,25	Logs Coniferous
13.669	14.165	14.858	15.801	14.722	89,66	Mining wood, coniferous
5.247	6.807	6.144	9.401	9.409	104,04	Other long coniferous wood
14.476	20.161	19.527	21.487	25.379	111,09	Cord coniferous wood
83.929	84.660	71.527	79.378	77.321	99,50	Logs broadleaf
745	1.741	1.280	1.247	1.130	93,59	Mining wood, broadleaf
16	33	67	144	128	14,00	Other long broadleaf wood
3.659	1.326	2.050	2.837	2.110	73,57	Cord broadleaf wood
2.102	4.378	2.977	2.860	3.098	151,84	Coniferous firewood
100.828	124.673	121.275	195.376	220.428	108,08	Broadleaf firewood
377	225	338	662	1.164	124,30	Other roughly worked wood

NIVO OBRADE BOSNA I HERCEGOVINA

**2 - 1.1 Proizvodnja, prodaja i zalihe šumskih proizvoda prema asortimanu
(nastavak)**

m3

ZALIHE	F 2002	F 2003	01 2004	02 2004	03 2004	04 2004
UKUPNO	538.627	403.209	340.667	395.292	240.304	411.956
CETINJACA	209.509	150.984	121.157	135.266	87.304	132.122
LISTACA	329.118	252.141	219.510	260.026	153.000	279.834
Trupci cetinjaca	109.624	73.497	66.644	76.642	63.304	68.399
Rudnicko drvo cetinjaca	46.945	30.568	19.940	23.769	8.703	23.541
Ostalo dugo drvo cetinjaca	3.441	2.860	2.480	2.607	942	651
Prostorno drvo cetinjaca	42.046	36.680	30.835	31.060	12.990	37.923
Trupci listaca	68.272	52.897	47.582	57.675	51.678	54.486
Rudnicko drvo listaca	4.259	3.498	1.527	1.835	1.664	1.257
Ostalo dugo drvo listaca	3.374	3.773	2.112	1.265	1.258	148
Prostorno drvo listaca	4.485	4.032	1.198	1.804	796	1.902
Ogrijevno drvo cetinjaca	7.454	7.463	1.258	1.188	1.365	974
Ogrijevno drvo listaca	248.728	187.733	166.455	196.820	96.775	221.851
Ostalo grubo obradeno drvo	1	291	636	657	829	824

2 - 1.1 Production, sales and stocks of forest products by type
(continued)

m3

05 2004	06 2004	07 2004	08 2004	09 2004	<u>F 01-09.2004</u> F 01-09.2003	STOCKS
393.558	385.315	327.447	320.720	292.341	79,81	<i>TOTAL</i>
136.960	147.155	126.518	140.916	133.018	79,21	<i>CONIFEROUS</i>
256.598	238.160	200.929	179.804	159.323	80,21	<i>BROAD LEAF</i>
73.347	77.788	61.492	70.618	64.485	86,57	<i>Logs Coniferous</i>
20.454	24.331	21.790	21.613	21.463	62,98	<i>Mining wood, coniferous</i>
545	565	476	546	576	35,63	<i>Other long coniferous wood</i>
40.818	42.504	41.060	47.494	46.057	92,57	<i>Cord coniferous wood</i>
48.266	39.676	32.078	35.494	44.063	83,75	<i>Logs broadleaf</i>
1.844	1.312	1.091	1.206	1.163	39,35	<i>Mining wood, broadleaf</i>
185	160	148	133	165	14,48	<i>Other long broadleaf wood</i>
1.523	1.417	935	806	929	26,50	<i>Cord broadleaf wood</i>
965	1.060	793	645	437	12,70	<i>Coniferous firewood</i>
204.604	195.324	166.522	141.973	112.650	82,51	<i>Broadleaf firewood</i>
1.007	1.178	1.062	192	353	269,95	<i>Other roughly worked wood</i>

2 - 1.2 Učešće entiteta i Brcko distrikta u proizvodnji šumskih proizvoda prema asortimanu (%)

PROIZVODNJA	m ³					
	2002			2003		
	Federacija BiH	Republika Srpska	Distrikt Brcko	Federacija BiH	Republika Srpska	Distrikt Brcko
UKUPNO	54,36	45,33	0,31	56,38	43,50	0,12
CETINJACA	58,34	41,65	0,00	59,96	40,04	0,00
LISTACA	50,40	48,99	0,61	53,17	46,61	0,22
Trupci cetinjaca	59,18	40,82	0,00	60,17	39,83	0,00
Rudnicko drvo cetinjaca	57,18	42,82	0,00	57,47	42,53	0,00
Ostalo dugo drvo cetinjaca	55,63	44,37	0,00	78,34	21,66	0,00
Prostorno drvo cetinjaca	39,67	60,33	0,00	44,02	55,98	0,00
Trupci listaca	50,18	49,24	0,58	53,94	45,83	0,23
Rudnicko drvo listaca	51,82	48,18	0,00	53,81	46,19	0,00
Ostalo dugo drvo listaca	2,93	97,07	0,00	0,41	99,59	0,00
Prostorno drvo listaca	58,68	41,32	0,00	56,36	43,64	0,00
Ogrijevno drvo cetinjaca	95,00	5,00	0,00	92,05	7,95	0,00
Ogrijevno drvo listaca	51,99	47,33	0,68	54,26	45,52	0,22
Ostalo grubo obradeno drvo	89,06	10,94	0,00	17,57	82,43	0,00

NIVO OBRADJE BOSNA I HERCEGOVINA

2 - 1.2 Shares of the Entities and Brcko district of the production of forest assortments (%)

m3

01-09 2003			01-09 2004			PRODUCTION
Federacija BiH	Republika Srpska	Distrikt Brcko	Federacija BiH	Republika Srpska	Distrikt Brcko	
57,30	42,60	0,10	57,34	42,55	0,10	TOTAL
60,80	39,20	0,00	59,88	40,11	0,00	CONIFEROUS
53,87	45,93	0,20	55,01	44,80	0,19	BROAD LEAF
61,15	38,85	0,00	60,72	39,27	0,00	Logs Coniferous
58,40	41,60	0,00	59,03	40,97	0,00	Mining wood, coniferous
78,67	21,33	0,00	78,83	21,17	0,00	Other long coniferous wood
45,31	54,69	0,00	40,72	59,28	0,00	Cord coniferous wood
53,90	45,89	0,22	54,85	44,99	0,15	Logs broadleaf
52,88	47,12	0,00	77,66	22,34	0,00	Mining wood, broadleaf
0,17	99,83	0,00	11,42	88,58	0,00	Other long broadleaf wood
53,38	46,62	0,00	69,31	30,69	0,00	Cord broadleaf wood
90,72	9,28	0,00	92,82	7,18	0,00	Coniferous firewood
55,71	44,09	0,20	54,87	44,90	0,23	Broadleaf firewood
24,92	75,08	0,00	17,45	82,55	0,00	Other roughly worked wood

2 - 2.1 Proizvodnja, prodaja i zalihe šumskih proizvoda prema asortimanu

m3

PROIZVODNJA	2002	2003	01 2004	02 2004	03 2004	04 2004
UKUPNO	2.303.597	2.311.480	89.771	123.589	139.326	172.971
CETINJACA	1.229.829	1.157.558	46.174	59.613	63.095	76.520
LISTACA	1.073.090	1.153.122	43.463	63.888	76.118	96.157
Trupci cetinjaca	1.012.592	932.188	39.214	49.892	52.094	61.072
Rudnicko drvo cetinjaca	112.618	98.409	3.818	4.868	5.397	7.016
Ostalo dugo drvo cetinjaca	30.172	50.641	34	843	936	1.742
Prostorno drvo cetinjaca	45.750	52.707	1.637	2.249	2.275	4.011
Trupci listaca	466.999	484.854	26.438	34.704	39.934	41.615
Rudnicko drvo listaca	9.009	9.725	460	706	547	1.040
Ostalo dugo drvo listaca	1.088	146	26	14	3	43
Prostorno drvo listaca	10.434	13.490	996	651	497	1.197
Ogrijevno drvo cetinjaca	28.618	23.613	1.471	1.761	2.393	2.679
Ogrijevno drvo listaca	585.560	644.907	15.543	27.813	35.137	52.262
Ostalo grubo obradeno drvo	757	800	134	88	113	294

2 - 2.1 Production, sales and stocks of forest products by type

m3

05 2004	06 2004	07 2004	08 2004	09 2004	<u>01-09.2004</u> <u>01-09.2003</u>	PRODUCTION
218.065	225.973	234.499	267.040	264.843	98,89	TOTAL
115.332	116.849	132.718	133.384	119.054	93,86	CONIFEROUS
102.661	109.051	101.759	133.640	145.687	104,40	BROAD LEAF
91.018	88.693	106.615	102.041	89.378	91,00	Logs Coniferous
9.672	10.430	10.646	10.932	10.171	91,55	Mining wood, coniferous
4.569	5.576	5.359	7.504	7.812	98,36	Other long coniferous wood
7.827	7.880	7.111	10.252	8.609	125,30	Cord coniferous wood
42.659	44.868	38.586	43.004	41.592	100,38	Logs broadleaf
1.348	1.096	994	1.065	1.305	123,87	Mining wood, broadleaf
8	19	26	47	2	417,78	Other long broadleaf wood
2.177	646	1.442	2.126	1.430	120,44	Cord broadleaf wood
2.246	4.270	2.987	2.655	3.083	147,88	Coniferous firewood
56.469	62.422	60.711	87.398	101.368	106,79	Broadleaf firewood
72	73	22	16	92	135,74	Other roughly worked wood

2 - 2.1 Proizvodnja, prodaja i zalihe šumskih proizvoda prema asortimanu (nastavak)

PRODAJA	m ³					
	2002	2003	01 2004	02 2004	03 2004	04 2004
UKUPNO	2.285.594	2.314.633	72.849	106.507	131.061	167.044
CETINJACA	1.216.495	1.162.688	33.990	50.889	60.761	76.905
LISTACA	1.067.244	1.148.079	38.722	55.528	70.056	89.820
Trupci cetinjaca	993.136	928.870	30.168	44.578	50.548	62.280
Rudnicko drvo cetinjaca	98.378	84.110	1.911	2.617	4.072	5.789
Ostalo dugo drvo cetinjaca	29.816	51.763	70	327	839	1.950
Prostorno drvo cetinjaca	77.199	77.712	571	1.966	3.255	4.506
Trupci listaca	437.216	469.934	27.193	34.388	37.871	44.582
Rudnicko drvo listaca	4.962	6.606	217	330	447	609
Ostalo dugo drvo listaca	1.174	122	214	341	34	613
Prostorno drvo listaca	9.855	16.759	1.080	816	395	1.307
Ogrijevno drvo cetinjaca	17.887	20.233	1.270	1.401	2.047	2.380
Ogrijevno drvo listaca	614.037	654.658	10.018	19.653	31.309	42.709
Ostalo grubo obradeno drvo	1.934	3.866	137	90	244	319

2 - 2.1 Production, sales and stocks of forest products by type
(continued)

m3

05 2004	06 2004	07 2004	08 2004	09 2004	<u>01-09.2004</u> <u>01-09.2003</u>	SALES
201.597	225.861	211.711	287.323	276.121	95,75	<i>TOTAL</i>
100.292	114.955	116.069	128.323	117.136	89,05	<i>CONIFEROUS</i>
101.210	110.761	95.590	158.612	158.066	102,82	<i>BROAD LEAF</i>
80.949	89.645	93.795	101.048	91.038	88,22	<i>Logs Coniferous</i>
7.712	8.179	8.853	9.181	8.693	86,20	<i>Mining wood, coniferous</i>
4.020	5.506	4.578	7.724	7.995	105,58	<i>Other long coniferous wood</i>
5.748	7.532	6.202	7.829	6.556	77,71	<i>Cord coniferous wood</i>
42.102	43.757	33.958	44.848	40.550	100,51	<i>Logs broadleaf</i>
518	1.489	1.091	826	920	132,82	<i>Mining wood, broadleaf</i>
367	431	524	268	551	463,64	<i>Other long broadleaf wood</i>
2.510	489	1.496	2.104	1.568	95,33	<i>Cord broadleaf wood</i>
1.863	4.093	2.641	2.541	2.854	158,86	<i>Coniferous firewood</i>
55.713	64.595	58.521	110.566	114.477	104,32	<i>Broadleaf firewood</i>
95	145	52	388	919	82,98	<i>Other roughly worked wood</i>

2 - 2.1 Proizvodnja, prodaja i zalihe šumskih proizvoda prema asortimanu (nastavak)

ZALIHE	m ³					
	F 2002	F 2003	01 2004	02 2004	03 2004	04 2004
UKUPNO	142.263	119.691	97.906	124.629	127.031	130.908
CETINJACA	62.487	44.147	36.178	43.147	42.537	40.208
LISTACA	79.664	75.544	61.728	81.482	84.494	90.700
Trupci cetinjaca	31.029	19.915	18.782	22.192	24.725	18.032
Rudnicko drvo cetinjaca	11.664	7.590	6.366	8.630	5.140	8.606
Ostalo dugo drvo cetinjaca	1.645	78	71	53	26	211
Prostorno drvo cetinjaca	10.669	15.650	9.718	11.102	11.399	12.393
Trupci listaca	20.127	14.144	12.796	15.745	16.205	14.183
Rudnicko drvo listaca	1.218	860	736	1.045	822	894
Ostalo dugo drvo listaca	0	0	0	0	0	0
Prostorno drvo listaca	510	381	359	429	391	245
Ogrijevno drvo cetinjaca	7.591	915	1.241	1.170	1.247	966
Ogrijevno drvo listaca	57.920	60.159	47.837	64.263	67.076	75.378
Ostalo grubo obradeno drvo	0	0	0	0	0	0

2 - 2.1 Production, sales and stocks of forest products by type
(continued)

m3

05 2004	06 2004	07 2004	08 2004	09 2004	<u>F 01-09.2004</u> <u>F 01-09.2003</u>	STOCKS
119.116	124.922	116.682	120.474	115.553	84	TOTAL
43.204	41.780	42.749	53.961	53.561	71	CONIFEROUS
75.912	83.142	73.933	66.513	61.992	95	BROAD LEAF
21.101	16.398	15.605	20.925	21.471	64	Logs Coniferous
5.646	8.481	8.216	8.527	8.699	65	Mining wood, coniferous
175	20	16	75	56	5	Other long coniferous wood
15.345	15.874	18.169	23.839	23.009	147	Cord coniferous wood
12.625	11.983	11.454	12.371	19.938	70	Logs broadleaf
1.451	931	645	649	567	71	Mining wood, broadleaf
0	0	0	0	0	-	Other long broadleaf wood
353	400	313	401	535	75	Cord broadleaf wood
937	1.007	743	595	326	12	Coniferous firewood
61.483	69.828	61.521	53.092	40.952	104	Broadleaf firewood
0	0	0	0	0	-	Other roughly worked wood

2 - 3.1 Proizvodnja, prodaja i zalihe šumskih proizvoda prema asortimanu (nastavak)

PROIZVODNJA	m3					
	2002	2003	01 2004	02 2004	03 2004	04 2004
UKUPNO	1.921.232	1.783.621	44.689	100.236	137.207	141.125
CETINJACA	878.071	772.912	21.005	33.489	56.939	64.664
LISTACA	1.043.161	1.010.709	23.684	66.747	80.268	76.461
Trupci cetinjaca	698.504	616.999	18.392	27.870	46.289	51.029
Rudnicko drvo cetinjaca	84.322	72.816	2.068	3.181	5.378	5.641
Ostalo dugo drvo cetinjaca	24.066	14.004	69	398	933	881
Prostorno drvo cetinjaca	69.588	67.017	459	1.984	3.814	6.690
Trupci listaca	458.313	412.006	9.983	32.758	38.411	34.940
Rudnicko drvo listaca	8.375	8.347	341	165	316	226
Ostalo dugo drvo listaca	36.079	35.101	838	130	82	106
Prostorno drvo listaca	7.346	10.446	103	876	950	320
Ogrijevno drvo cetinjaca	1.507	2.039	17	56	141	173
Ogrijevno drvo listaca	533.039	541.093	11.771	32.218	39.969	40.617
Ostalo grubo obradeno drvo	93	3.753	648	600	924	502

2 - 3.1 Production, sales and stocks forests products by type
(continued)

m3

05 2004	06 2004	07 2004	08 2004	09 2004	<u>01-09.2004</u> <u>01-09.2003</u>	PRODUCTION
148.524	174.849	135.065	198.271	208.467	98,72	TOTAL
68.781	96.863	62.601	91.257	82.300	97,51	CONIFEROUS
79.743	77.986	72.464	107.014	126.167	99,73	BROAD LEAF
52.096	72.698	46.228	69.104	56.095	92,63	Logs Coniferous
6.640	8.704	5.225	7.116	6.688	89,21	Mining wood, coniferous
1.180	1.425	1.420	1.592	1.334	97,44	Other long coniferous wood
8.415	13.648	9.403	13.136	17.943	151,11	Cord coniferous wood
36.475	32.507	29.702	37.370	37.723	96,71	Logs broadleaf
227	227	229	504	227	39,98	Mining wood, broadleaf
45	0	15	84	158	5,48	Other long broadleaf wood
874	430	307	480	602	61,05	Cord broadleaf wood
250	310	325	309	240	111,79	Coniferous firewood
41.857	44.649	42.041	68.265	87.051	110,43	Broadleaf firewood
465	251	170	311	406	213,10	Other roughly worked wood

2 - 3.1 Proizvodnja, prodaja i zalihe šumskih proizvoda prema asortimanu (nastavak)

PRODAJA	m3					
	2002	2003	01 2004	02 2004	03 2004	04 2004
UKUPNO	1.944.055	1.801.021	21.813	65.873	112.237	153.213
CETINJACA	916.903	776.685	6.720	23.430	44.767	75.856
LISTACA	1.027.152	1.024.336	15.093	42.443	67.470	77.357
Trupci cetinjaca	718.895	627.358	6.243	21.274	38.579	63.379
Rudnicko drvo cetinjaca	68.885	58.276	229	1.168	3.563	6.600
Ostalo dugo drvo cetinjaca	27.709	14.341	39	253	916	1.020
Prostorno drvo cetinjaca	99.166	74.367	209	680	1.591	4.646
Trupci listaca	460.043	410.006	8.482	25.725	34.867	40.066
Rudnicko drvo listaca	7.805	8.093	219	166	842	159
Ostalo dugo drvo listaca	31.726	30.963	563	972	1.258	47
Prostorno drvo listaca	8.916	13.348	108	251	405	519
Ogrijevno drvo cetinjaca	2.164	2.306	0	55	118	211
Ogrijevno drvo listaca	518.662	558.851	5.059	14.750	29.269	36.136
Ostalo grubo obradeno drvo	84	3.112	662	579	829	430

2 - 3.1 Production, sales and stocks forests products by type
(continued)

						m3
05 2004	06 2004	07 2004	08 2004	09 2004	<u>01-09.2004</u> <u>01-09.2003</u>	SALES
155.003	185.704	184.662	208.369	232.764	99,76	TOTAL
67.022	84.374	84.323	88.295	89.957	96,22	CONIFEROUS
87.981	101.330	100.339	120.074	142.807	102,59	BROAD LEAF
50.868	64.171	63.091	66.021	63.447	90,81	Logs Coniferous
5.957	5.986	6.005	6.620	6.029	94,79	Mining wood, coniferous
1.227	1.301	1.566	1.677	1.414	98,95	Other long coniferous wood
8.728	12.629	13.325	13.658	18.823	149,20	Cord coniferous wood
41.674	40.721	37.271	34.347	36.693	98,51	Logs broadleaf
227	252	189	421	210	54,76	Mining wood, broadleaf
8	25	27	84	126	13,16	Other long broadleaf wood
1.149	837	554	733	542	48,19	Cord broadleaf wood
239	285	336	319	244	100,17	Coniferous firewood
44.644	59.417	62.012	84.215	104.991	112,84	Broadleaf firewood
282	80	286	274	245	183,99	Other roughly worked wood

2 - 3.1 Proizvodnja, prodaja i zalihe šumskih proizvoda prema asortimanu (nastavak)

ZALIHE	m3					
	F 2002	F 2003	01 2004	02 2004	03 2004	04 2004
UKUPNO	350.346	271.448	242.067	269.549	112.237	280.050
CETINJACA	129.095	94.514	84.979	92.119	44.767	91.914
LISTACA	221.251	176.934	157.088	177.430	67.470	188.136
Trupci cetinjaca	64.339	46.393	47.862	54.450	38.579	50.367
Rudnicko drvo cetinjaca	31.012	20.003	13.574	15.139	3.563	14.935
Ostalo dugo drvo cetinjaca	2.821	1.626	2.409	2.554	916	440
Prostorno drvo cetinjaca	30.100	26.487	21.117	19.958	1.591	25.530
Trupci listaca	41.283	33.191	34.283	41.323	34.867	39.710
Rudnicko drvo listaca	2.823	2.108	791	790	842	363
Ostalo dugo drvo listaca	3.374	3.773	2.112	1.265	1.258	148
Prostorno drvo listaca	3.840	3.489	839	1.375	405	1.657
Ogrijevno drvo cetinjaca	824	4	17	18	118	8
Ogrijevno drvo listaca	169.930	134.081	118.427	132.020	29.269	146.068
Ostalo grubo obradeno drvo	1	291	636	657	829	824

2 - 3.1 Production, sales and stocks forests products by type
(continued)

						m3
05 2004	06 2004	07 2004	08 2004	09 2004	<u>F 01-09.2004</u> F 01-09.2003	STOCKS
273.481	259.539	210.117	200.064	176.632	77,69	TOTAL
93.756	105.375	83.769	86.955	79.457	84,54	CONIFEROUS
179.725	154.164	126.348	113.109	97.175	74,06	BROAD LEAF
52.246	61.390	45.887	49.693	43.014	100,77	Logs Coniferous
14.808	15.850	13.574	13.086	12.764	61,83	Mining wood, coniferous
370	545	460	471	520	75,21	Other long coniferous wood
25.473	26.630	22.891	23.655	23.048	72,68	Cord coniferous wood
35.148	27.249	20.301	22.941	23.981	92,37	Logs broadleaf
393	381	446	557	596	23,64	Mining wood, broadleaf
185	160	148	133	165	14,48	Other long broadleaf wood
1.170	1.017	622	405	394	20,70	Cord broadleaf wood
28	53	50	50	111	871,15	Coniferous firewood
142.653	125.086	104.676	88.881	71.686	73,84	Broadleaf firewood
1.007	1.178	1.062	192	353	269,95	Other roughly worked wood

3. GRAĐEVINARSTVO CONSTRUCTION

GRAĐEVINARSTVO

Metodološka objašnjenja

Podaci u ovom biltenu dani su na temelju obrade statističkih podataka mjesečnog izvještaja građevinarstva koji zavodima za statistiku u oba BiH entiteta dostavljaju preduzeca koja se bave građevinskim radovima.

Pod pojmom građevinski radovi obuhvacene su djelatnosti: pripremni radovi na gradilištu (uključujući rušenje građevinskih objekata, zemljane radove i ispitivanje terena za gradnju); izgradnja objekata visokogradnje, niskogradnje i hidrogradnje (izgradnja kompletnih objekata ili njihovih dijelova, rekonstrukcija, dogradnja i održavanje objekata); svi instalacioni radovi (struja, plin, voda, grijanje, ventilacija i hlađenje); izolacioni radovi i završni građevinski radovi (fasaderski radovi, malterisanje, ugradnja stolarije, postavljanje podnih i zidnih obloga, molerski, staklarski i ostali završni radovi).

Grđevinski objekt je svaka nadzemna i podzemna gradnja kao i vodogradnja, koja u građevinskom smislu predstavlja odvojenu samostalnu cjelinu sa unaprijed određenom namjenom, a fiksirana je za određenu lokaciju.

Podaci o vrijednosti izvršenih radova racunati su temeljem privremenih mjesečnih situacija i predstavljaju obracunatu vrijednost izvršenih radova, a ne vrijednost naplacenih radova. Vrijednost je data u tekucim cijenama, a iskazana je u hiljadama KM. Ovaj podatak podložan je korekcijama pri izradi konacnih obracuna.

Podatak o izvršenim efektivnim satima rada predstavlja ukupan broj sati koji su ostvarili radnici na građevinskim objektima u izvještajnom mjesecu u redovnom i prekovremenom radu, bez obzira da li su placeni po satu, normi ili akordu. U ovaj broj nisu uključeni sati rada inžinjera i tehnicara.

Podatak o broju radnika odnosi se na stanje zaposlenih radnika posljednjeg dana u mjesecu na koji se podaci odnose, a ne uključuje radnike na administrativnim i inžinjerko-tehničkim poslovima.

Za mjerenje promjena podataka o radnoj snazi u građevinarstvu (broj izvršenih efektivnih radnih sati i broja radnika na gradilištima) racunate su stope promjena u odnosu na prethodni mjesec za obje varijable. Podaci su racunati prema slijedećoj formuli:

$$? = \{ [\text{Vrijednost (t)} - \text{Vrijednost (t-1)}] / \text{Vrijednost (t-1)} \} \times 100$$

gdje (t) predstavlja vrijednost iz tekućeg mjeseca, a (t-1) vrijednost iz prethodnog mjeseca.

CONSTRUCTION

Notes on methodology

The data in this bulletin are gathered from monthly reports on construction, which are submitted to both entity Statistics Offices by construction companies.

The term “construction works” covers the following activities: preparatory works on building sites (including demolition of construction objects, land works and area exploration for building), buildings, civil engineering and hydraulic engineering (building complete objects or their parts, reconstruction, rebuilding and maintenance of objects); all installation works (electricity, water, gas, heating, ventilation and air devices); insulation works and final construction works (façade works, plastering with mortar, joiner’s trade, installing floor and wall linings, painting, glazing and other final works).

The construction object is any above-ground, underground or aquatic building, resulting from a separate and pre-visualised plan in a pre-determined, fixed location.

Data on the value of completed works is calculated on a monthly basis and represent the estimated value of work completed, and not the construction costs incurred to date. The value is given at current prices, in thousands of convertible marks (KM). This data is subject to corrections after final calculations.

Data on effective hours completed represents the total number of hours that workers have spent on the building sites in a given month in regular and overtime work, independently of whether they are paid by the hour, norm or agreement. This number does not include the hours worked by engineers and technicians.

Data on number of workers refer to the number of workers employed on the last day of the month to which the data are related. This information does not include workers in the administrative, engineering or technical sector.

To calculate the change of data on employment in construction (number of completed effective working hours and number of workers on building sites) the rates of change in relation to the previous month for both variables were taken into account. Change is calculated according to the following formula:

$$\Delta = \{[\text{Value (t)} - \text{Value (t-1)}] / \text{Value (t - 1)}\} \times 100$$

Where Value (t) represents the value of the current month, and Value (t-1) the value from previous month.

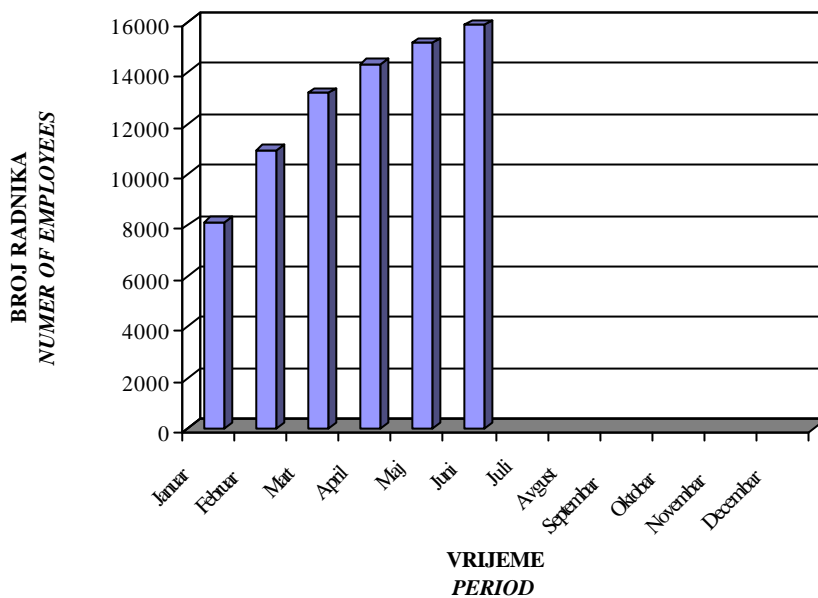
3 - 1.1 Indeksi vrijednosti izvršenih građevinskih radova, izvršenih efektivnih sati i broja radnika

Indices of value of completed construction works, completed effective hours and workers

	<u>01.2004</u> F2003	<u>02.2004</u> F2003	<u>03.2004</u> F2003	<u>04.2004</u> F2003	<u>05.2004</u> F2003	<u>06.2004</u> F2003	
Vrijednost izvršenih radova	242,0	302,5	410,1	452,2	526,0	686,7	<i>Value of completed works</i>
Izvršeni efektivni sati rada	225,1	296,6	394,5	440,3	469,4	504,7	<i>Completed effective hours</i>
Broj radnika na gradilištima	252,4	340,5	409,4	444,8	470,5	492,8	<i>Number of employees on constr.site</i>
	<u>01.2004</u> <u>01.2003</u>	<u>02.2004</u> <u>02.2003</u>	<u>03.2004</u> <u>03.2003</u>	<u>04.2004</u> <u>04.2003</u>	<u>05.2004</u> <u>05.2003</u>	<u>06.2004</u> <u>06.2003</u>	
Vrijednost izvršenih radova	120,9	114,3	97,0	1656,8	1597,4	1898,1	<i>Value of completed works</i>
Izvršeni efektivni sati rada	92,0	95,0	91,9	2021,0	1886,0	2345,1	<i>Completed effective hours</i>
Broj radnika na gradilištima	94,9	99,6	96,0	2500,5	2617,4	3035,4	<i>Number of employees on constr.site</i>
	<u>01.2004</u> <u>12.2002</u>	<u>02.2004</u> <u>01.2003</u>	<u>03.2004</u> <u>02.2003</u>	<u>04.2004</u> <u>03.2003</u>	<u>05.2004</u> <u>04.2003</u>	<u>06.2004</u> <u>05.2003</u>	
Vrijednost izvršenih radova	34,5	151,1	155,0	107,0	1926,9	2085,6	<i>Value of completed works</i>
Izvršeni efektivni sati rada	51,6	121,2	126,3	102,6	2154,2	2027,9	<i>Completed effective hours</i>
Broj radnika na gradilištima	55,4	128,0	119,8	104,3	2644,9	2741,8	<i>Number of employees on constr.site</i>

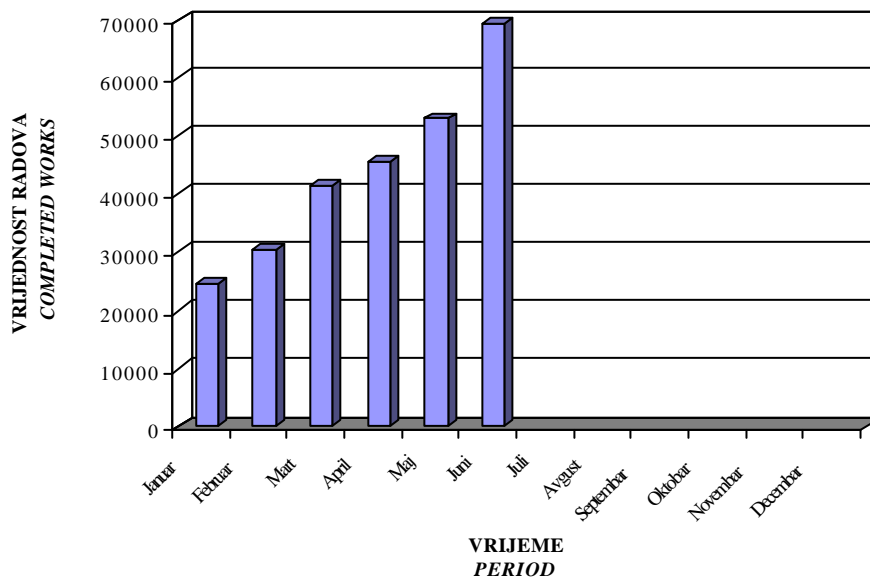
Grafikon 1:
Graph 1:

BROJ RADNIKA NA GRAĐEVINSKIM RADOVIMA U BIH
I - VI 2004
NUMBER OF EMPLOYEES ON CONSTRUCTION SITES IN BIH



Grafikon 2:
Graph 2:

VRIJEDNOST IZVRŠENIH GRAĐEVINSKIH RADOVA U BIH
I - VI 2004.
VALUE OF CONSTRUCTION WORKS IN BIH



NIVO OBRADJE BOSNA I HERCEGOVINA
DATA PROCESSING - LEVEL BOSNIA AND HERZEGOVINA

3 - 1.2 Vrijednost izvršenih građevinskih radova, izvršeni efektivni sati i broj radnika

Value of completed construction works, completed effective hours and workers

	Vrijednost izvršenih radova *	Izvršeni efektivni sati rada	Broj radnika na gradilištima	ΔVrijednosti izvršenih radova	ΔIzvršenih efektivnih sati rada	ΔBroja radnika na gradilištima	
	<i>Value of completed works *</i>	<i>Completed effective hours</i>	<i>Number of employees on constr. site</i>	<i>D Value of completed works</i>	<i>D Completed effective hours</i>	<i>D Number of employees on constr. site</i>	
2004							2004
Januar	24414	1098212	8130	120,90	91,98	94,85	January
Februar	30518	1447299	10967	125,00	131,79	134,90	February
Mart	41381	1924824	13189	135,60	132,99	120,26	March
April	45629	2148566	14328	110,27	111,62	108,64	April
Maj	53067	2290182	15155	116,30	106,59	105,77	May
Juni	69282	2462508	15875	130,56	107,52	104,75	June
Juli							July
Avgust							Avgust
Septembar							September
Oktobar							Oktober
Novembar							November
Decembar							December
Φ I - VI 2004	44049	1895265	12941				<i>F</i> I - III 2004
Σ I - VI 2004	264291	11371591	77644				<i>S</i> I - III 2004

D = % promjene pojave prema prethodnom mjesecu / % monthly variation towards previous month

* Vrijednost izvršenih radova data je u hilj. KM / Value of completed works, in thousand KM

3 - 2.1 Vrijednost izvršenih građevinskih radova, izvršeni efektivni sati i broj radnika

Value of completed construction works, completed effective hours and workers

	Vrijednost izvršenih radova * <i>Value of completed works *</i>	Izvršeni efektivni sati rada <i>Completed effective hours</i>	Broj radnika na gradilištima <i>Number of employees on constr. site</i>	ΔVrijednosti izvršenih radova <i>D Value of completed works</i>	ΔIzvršenih efektivnih sati rada <i>D Completed effective hours</i>	ΔBroja radnika na gradilištima <i>D Number of employees on constr. site</i>	
2004							2004
Januar	15450	741378	5684	136,4	88,4	94,0	January
Februar	16934	883467	7111	109,6	119,2	125,1	February
Mart	20942	1088933	8283	123,7	123,3	116,5	March
April	24807	1207528	8798	118,5	110,9	106,2	April
Maj	30939	1266822	9160	124,7	104,9	104,1	May
Juni	34887	1360526	9544	112,8	107,4	104,2	June
Juli							July
Avgust							Avgust
Septembar							September
Oktobar							Oktober
Novembar							November
Decembar							December
Φ I - VI 2004	23993	1091442	8097				F I - VI 2004
Σ I - VI 2004	143959	6548654	48580				S I - VI 2004

D = % promjene pojave prema prethodnom mjesecu / % monthly variation towards previous month

* Vrijednost izvršenih radova data je u hilj. KM / Value of completed works, in thousand KM

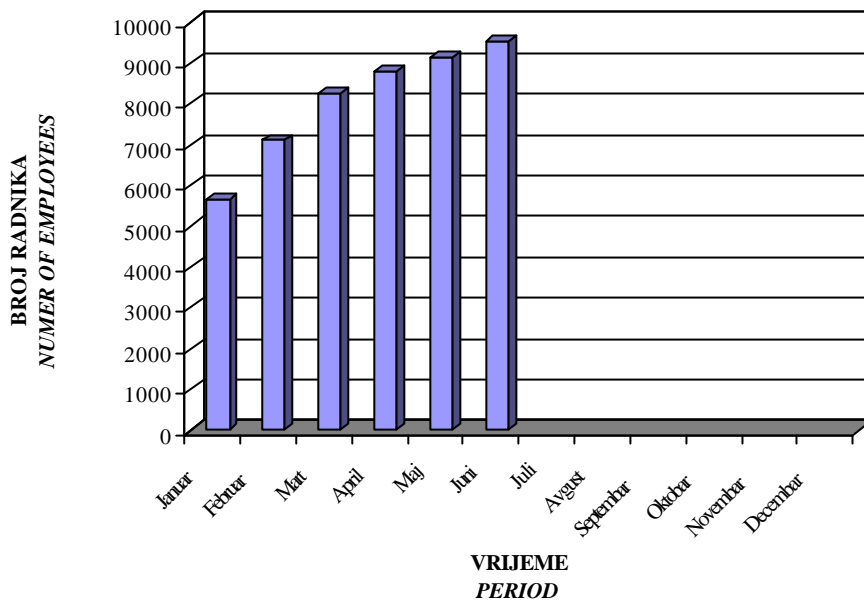
3- 2.2 Indeksi vrijednosti izvršenih građevinskih radova, izvršenih efektivnih sati i broja radnika

Indices of value of completed construction works, completed effective hours and workers

	<u>01.2004</u> F 2003	<u>02.2004</u> F 2003	<u>03.2004</u> F 2003	<u>04.2004</u> F 2003	<u>05.2004</u> F 2003	<u>06.2004</u> F 2003	
Vrijednost izvršenih radova	44,6	48,9	60,5	71,6	89,3	100,7	<i>Value of completed works</i>
Izvršeni efektivni sati rada	51,4	61,3	75,5	83,7	87,9	94,4	<i>Completed effective hours</i>
Broj radnika na gradilištima	57,7	72,2	84,1	89,4	93,0	96,9	<i>Number of employees on constr.site</i>
	<u>01.2004</u> <u>01.2003</u>	<u>02.2004</u> <u>02.2003</u>	<u>03.2004</u> <u>03.2003</u>	<u>04.2004</u> <u>04.2003</u>	<u>05.2004</u> <u>05.2003</u>	<u>06.2004</u> <u>06.2003</u>	
Vrijednost izvršenih radova	136,4	131,7	96,8	83,7	92,4	78,5	<i>Value of completed works</i>
Izvršeni efektivni sati rada	88,4	93,1	87,8	85,8	87,5	89,2	<i>Completed effective hours</i>
Broj radnika na gradilištima	94,0	99,6	94,1	91,1	89,1	92,4	<i>Number of employees on constr.site</i>
	<u>01.2004</u> <u>12.2002</u>	<u>02.2004</u> <u>01.2003</u>	<u>03.2004</u> <u>02.2003</u>	<u>04.2004</u> <u>03.2003</u>	<u>05.2004</u> <u>04.2003</u>	<u>06.2004</u> <u>05.2003</u>	
Vrijednost izvršenih radova	41,1	149,6	162,8	114,7	104,4	104,2	<i>Value of completed works</i>
Izvršeni efektivni sati rada	55,3	105,3	114,7	97,4	90,0	93,9	<i>Completed effective hours</i>
Broj radnika na gradilištima	57,9	117,5	116,0	99,9	94,9	92,9	<i>Number of employees on constr.site</i>

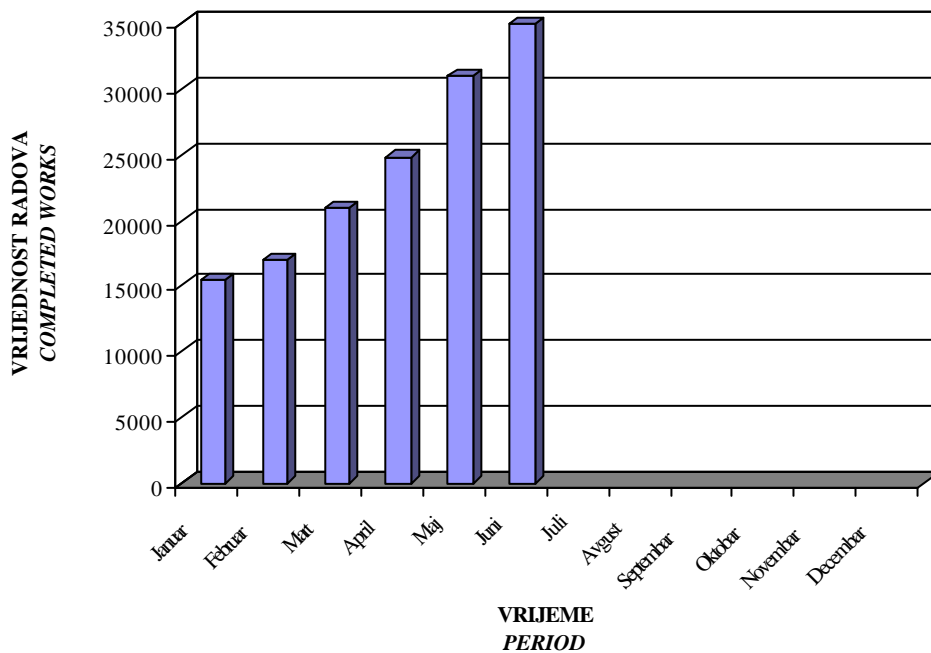
Grafikon 3:
Graph 3:

**BROJ RADNIKA NA GRAĐEVINSKIM RADOVIMA U FBiH
I - VI 2004**
NUMBER OF EMPLOYEES ON CONSTRUCTION SITES IN FBiH



Grafi
Graph 4:

**VRIJEDNOST IZVRŠENIH GRAĐEVINSKIH RADOVA U FBiH
I - VI 2004**
VALUE OF COMPLETED CONSTRUCTION WORKS IN FBiH

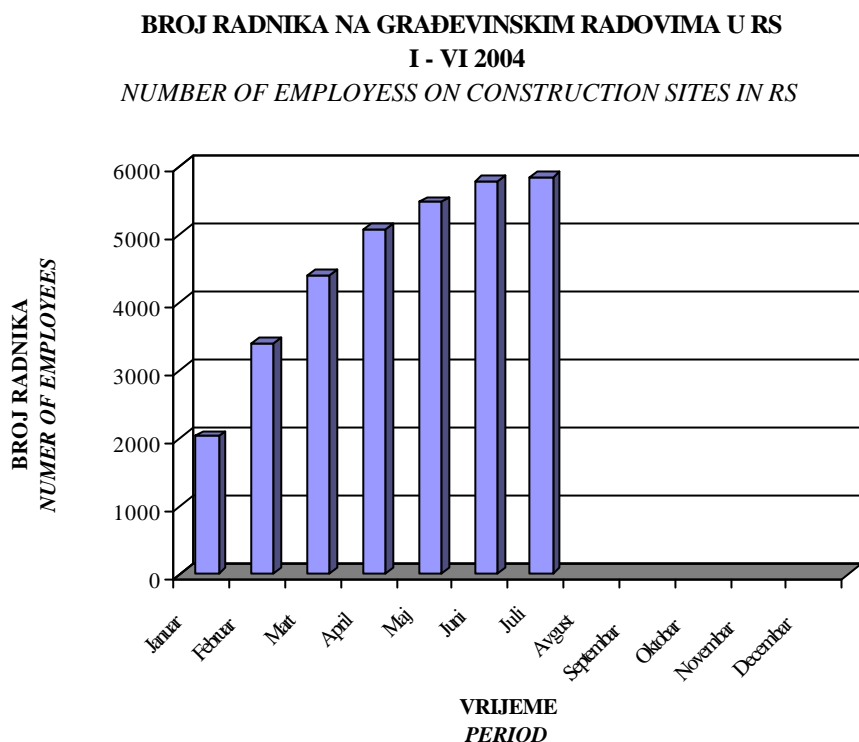


3 - 3.1 Indeksi vrijednosti izvršenih građevinskih radova, izvršenih efektivnih sati i broja radnika

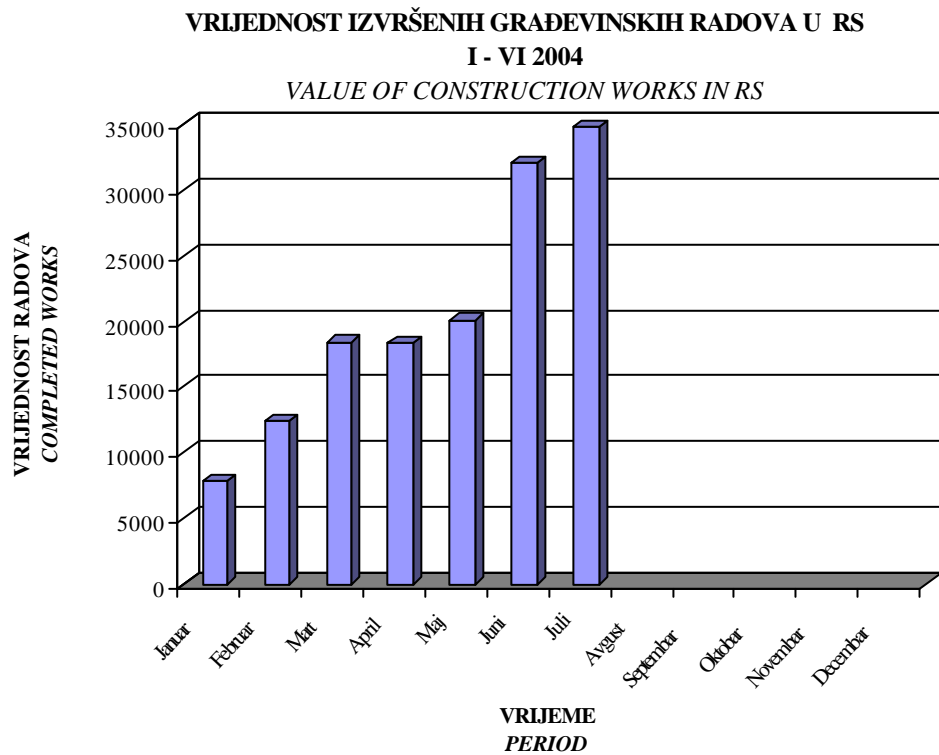
Indices of value of completed construction works, completed effective hours and workers

	<u>01.2004</u> F 2003	<u>02.2004</u> F 2003	<u>03.2004</u> F 2003	<u>04.2004</u> F 2003	<u>05.2004</u> F 2003	<u>06.2004</u> F 2003	
Vrijednost izvršenih radova	31,4	49,5	73,6	73,5	80,3	127,8	<i>Value of completed works</i>
Izvršeni efektivni sati rada	30,7	52,0	78,5	90,8	98,1	104,8	<i>Completed effective hours</i>
Broj radnika na gradilištima	35,8	59,9	77,7	89,9	96,7	102,0	<i>Number of employees on constr.site</i>
	<u>01.2004</u> 01.2003	<u>02.2004</u> 02.2003	<u>03.2004</u> 03.2003	<u>04.2004</u> 04.2003	<u>05.2004</u> 05.2003	<u>06.2004</u> 06.2003	
Vrijednost izvršenih radova	90,0	151,7	118,5	97,6	88,2	113,2	<i>Value of completed works</i>
Izvršeni efektivni sati rada	72,1	92,9	94,5	93,2	92,2	90,6	<i>Completed effective hours</i>
Broj radnika na gradilištima	73,8	95,1	88,3	92,3	93,5	90,8	<i>Number of employees on constr.site</i>
	<u>01.2004</u> 12.2002	<u>02.2004</u> 01.2003	<u>03.2004</u> 02.2003	<u>04.2004</u> 03.2003	<u>05.2004</u> 04.2003	<u>06.2004</u> 05.2003	
Vrijednost izvršenih radova	22,3	141,6	225,7	118,3	106,6	140,5	<i>Value of completed works</i>
Izvršeni efektivni sati rada	33,8	122,2	140,3	109,2	100,7	98,6	<i>Completed effective hours</i>
Broj radnika na gradilištima	38,4	123,5	123,3	102,1	99,3	98,6	<i>Number of employees on constr.site</i>

Grafikon 5:
Graph 5:



Grafikon 6:
Graph 6:



NIVO OBRADJE REPUBLIKA SRPSKA
DATA PROCESSING - LEVEL REPUBLIC SRPSKA

3 - 3.2 Vrijednost izvršenih građevinskih radova, izvršeni efektivni sati i broj radnika

Value of completed construction works, completed effective hours and workers

	* Vrijednost izvršenih radova / * Value of completed works	Izvršeni efektivni sati rada / Completed effective hours	Broj radnika na gradilištima / Number of employees on constr. site	ΔVrijednosti izvršenih radova / D Value of completed works	ΔIzvršenih efektivnih sati rada / D Completed effective hours	ΔBroja radnika na gradilištima / D Number of employees on constr. site	
2004							2004
Januar	7870	291425	2027	18,4	27,6	30,7	January
Februar	12380	493857	3390	157,3	169,5	167,2	February
Mart	18417	745977	4397	148,8	151,1	129,7	March
April	18394	862058	5084	99,9	115,6	115,6	April
Maj	20084	931485	5472	109,2	108,1	107,6	May
Juni	31980	995757	5771	159,2	106,9	105,5	June
Juli	34772	1021175	5838	108,7	102,6	101,2	July
Avgust							Avgust
Septembar							September
Oktobar							Oktober
Novembar							November
Decembar							December
Φ I - VI 2004	18188	720093	4357				F I - VI 2004
Σ I - VI 200	143897	5341734	31979				S I - VI 2004

67876,00

D = % promjene pojave prema prethodnom mjesecu / % monthly variation towards previous month

* Vrijednost izvršenih radova data je u hilj. KM / Value of completed works, in thousand KM

NIVO OBRADJE DISTRIKT BRCKO
DATA PROCESSING - LEVEL DISTRICT BRCKO

3 - 4.1 Vrijednost izvršenih građevinskih radova, izvršeni efektivni sati i broj radnika

Value of completed construction works, completed effective hours and workers

	* Vrijednost izvršenih radova / * Value of completed works	Izvršeni efektivni sati rada / Completed effective hours	Broj radnika na gradilištima / Number of employees on constr. site	ΔVrijednosti izvršenih radova / D Value of completed works	ΔIzvršenih efektivnih sati rada / D Completed effective hours	ΔBroja radnika na gradilištima / D Number of employees on constr.site	
2004							2004
Januar	1094	65409	419	38,5	78,7	85,2	January
Februar	1204	69975	466	110,1	107,0	111,2	February
Mart	2022	89914	509	167,9	128,5	109,2	March
April	2428	78980	446	120,1	87,8	87,6	April
Maj	2044	91875	523	84,2	116,3	117,3	May
Juni	2415	106225	560	118,2	115,6	107,1	June
Juli							July
Avgust							Avgust
Septembar							September
Oktober							Oktober
Novembar							November
Decembar							December
Φ I - VI 2004	1868	83730	487				F I - VI 2004
Σ I - VI 2004	11207	502378	2923				S I - VI 2004

D = % promjene pojave prema prethodnom mjesecu / % monthly variation towards previous month

* Vrijednost izvršenih radova data je u hilj. KM / Value of completed works, in thousand KM

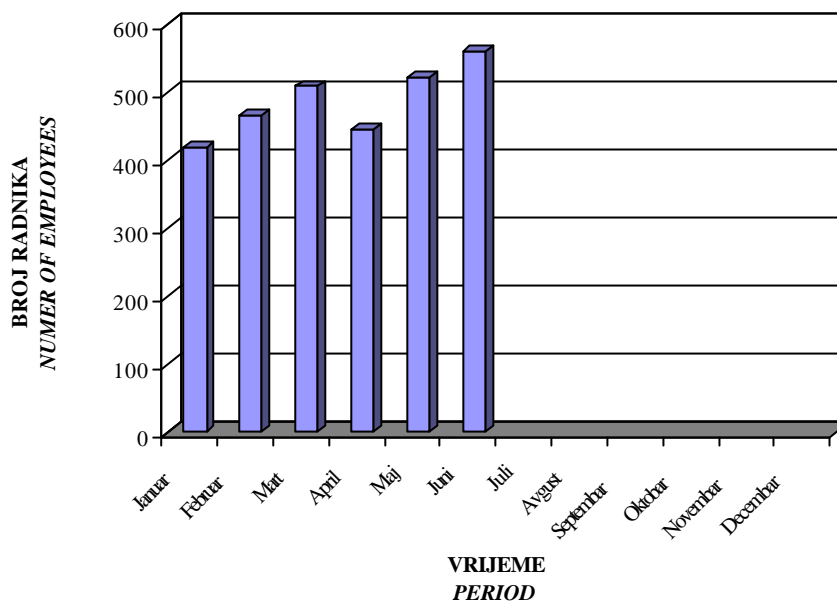
3 - 4.2 Indeksi vrijednosti izvršenih građevinskih radova, izvršenih efektivnih sati i broja radnika

Indices of value of completed construction works, completed effective hours and workers

	<u>01.2004</u> F 2003	<u>02.2004</u> F 2003	<u>03.2004</u> F 2003	<u>04.2004</u> F 2003	<u>05.2004</u> F 2003	<u>06.2004</u> F 2003	
Vrijednost izvršenih radova	35,7	39,3	66,1	79,3	66,8	78,9	<i>Value of completed works</i>
Izvršeni efektivni sati rada	60,6	64,9	83,3	73,2	85,2	98,5	<i>Completed effective hours</i>
Broj radnika na gradilištima	73,7	82,0	89,6	78,5	92,0	98,5	<i>Number of employees on constr.site</i>
	<u>01.2004</u> <u>01.2003</u>	<u>02.2004</u> <u>02.2003</u>	<u>03.2004</u> <u>03.2003</u>	<u>04.2004</u> <u>04.2003</u>	<u>05.2004</u> <u>05.2003</u>	<u>06.2004</u> <u>06.2003</u>	
Vrijednost izvršenih radova	163,3	136,7	183,7	141,7	88,2	70,0	<i>Value of completed works</i>
Izvršeni efektivni sati rada	128,0	122,9	145,7	102,0	110,0	112,1	<i>Completed effective hours</i>
Broj radnika na gradilištima	126,2	129,1	136,5	100,0	110,1	106,7	<i>Number of employees on constr.site</i>
	<u>01.2004</u> <u>12.2002</u>	<u>02.2004</u> <u>01.2003</u>	<u>03.2004</u> <u>02.2003</u>	<u>04.2004</u> <u>03.2003</u>	<u>05.2004</u> <u>04.2003</u>	<u>06.2004</u> <u>05.2003</u>	
Vrijednost izvršenih radova	24,9	179,7	229,5	220,5	119,3	104,2	<i>Value of completed works</i>
Izvršeni efektivni sati rada	62,7	137,0	157,9	128,0	118,7	127,1	<i>Completed effective hours</i>
Broj radnika na gradilištima	70,8	140,4	141,0	119,6	117,3	117,9	<i>Number of employees on constr.site</i>

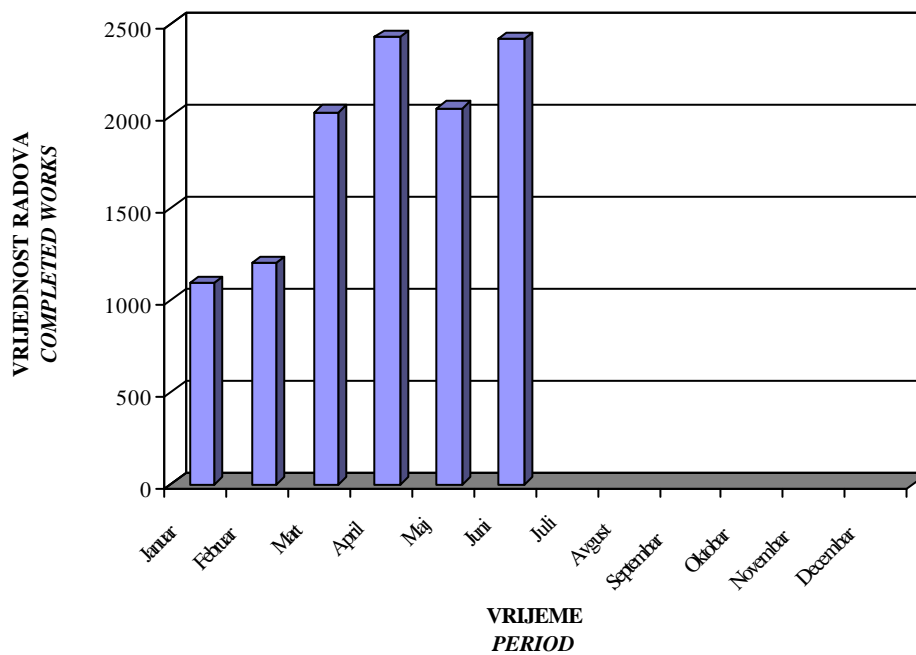
Grafikon 7:
Graph 7:

BROJ RADNIKA NA GRAĐEVINSKIM RADOVIMA U DB
I - VI 2004
NUMBER OF EMPLOYEES ON CONSTRUCTION SITES IN DB



Grafikon 8:
Graph 8:

VRIJEDNOST IZVRŠENIH GRAĐEVINSKIH RADOVA U DB
I - VI 2004
VALUE OF CONSTRUCTION WORKS IN DB



***4. PROMET I VEZE
TRANSPORT AND
COMMUNICATIONS***

PROMET I VEZE

Metodološka objašnjenja

Podaci o drumskom i željezničkom prometu dobijeni su obradom mjesečnih statističkih izvještaja, koja su entitetski statistički zavodi prikupili od poduzeca i drugih poslovnih subjekata koji se bave prometom putnika i robe (tereta) u unutrašnjem i međunarodnom prometu.

Za željeznički promet u ovom biltenu su raspoloživi sledeći pokazatelji: broj prevezenih putnika, tone prevezene robe (tereta) i broj putničkih i tonskih kilometara.

Za drumski promet, pored naprijed navedenih indikatora, raspoloživi su i podaci o pređenim kilometrima vozila.

U drumskom prometu nije obuhvaćen promet putnika i robe koji, svojim prijevoznim sredstvima, preduzeca obavljaju za vlastite potrebe (interni promet).

Pod pojmom prijevoz u prometu, podrazumjeva se kretanje putnika ili tereta od jednog mjesta (mjesto ukrcaja) do drugog mjesta (mjesto iskrcaja) i predstavlja mjeru aktivnosti prometnih poduzeca.

Putnički kilometer je izračunata jedinica mjere koja uslovno predstavlja prijevoz 1 putnika na udaljenost od 1 kilometra. Indikator - putnički kilometer – je kompleksan indikator koji je izračunat i dostavljen od strane poduzeca – izvještajnih jedinica. Ovaj indikator iskazuje agregiranu jedinicu mjere broja prevezenih putnika u odnosu na predenu dionicu puta. Radi se o mjeri fizičkog obima prometa i pokazatelj je rentabilnosti rada prometnog poduzeca.

Na isti način, tonski kilometer je jedinica mjere koja predstavlja prijevoz 1 tone robe na udaljenost od 1 kilometra.

Gradski promet predstavljen je podacima o pređenim kilometrima vozila i prevezenim putnicima na određenim gradskim linijama sa fiksiranim stanicama i utvrđenim prometnim redom. Podacima je obuhvaćen prijevoz putnika koji se obavlja gradskim autobusima, tramvajima i trolejbusima. U Republici Srpskoj ne postoje tramvajske i trolejbuske linije.

Oblast telekomunikacija u biltenu je predstavljena osnovnim indikatorima o poštanskom, telegrafskom i telefonskom prometu, a ulazni podaci dobijeni su na temelju mjesečnih izvješća poduzeca registriranih za tu djelatnost.

Podaci za pismonosne i paketne pošiljke u unutrašnjem i međunarodnom prometu sadrže transvere: pisama, preporučenih pošiljki, vrijednosnih pisama i paketa primljenih na otpremu i prispjelih za dostavu i isporuku, bez tranzita, a uključena je i otprema časopisa i tisak upućenih pretplatnicima.

TRANSPORT AND COMMUNICATIONS

Notes on methodologies

Data on road and railway transport were obtained by processing monthly statistical surveys, which the entity Statistical Office collected from enterprises and other business units which provide domestic and international transport of passengers and goods.

For railway transport the following indicators are available in this bulletin: number of transported passengers, tons of transported goods (freight) and number of passengers and tons/kilometre.

For road transport, besides the above mentioned indicators, data are available on kilometres covered by means of transport.

Road transport does not include the transport of passengers and goods undertaken by firms for their own needs and with their own means.

By transport we mean the movement of passengers or cargo from one place (place of loading) to another (place of unloading).

Passenger kilometre is an indicator representing the transport of one passenger for the distance of one kilometre. This indicator is a complex one, which is calculated and delivered by firms. It is obtained from the aggregated number of transported passengers in relation to the distance of transportation. It concerns a measure of physical quantity of transport and is an indicator of rentability work of a transport company.

In the same way, ton kilometres is a unit which represents the transportation of one ton of goods for the distance of one kilometre.

Urban transport is represented by data on kilometres covered by means of transportation and transported passengers on certain urban lines with fixed stations and schedules drive time. The data comprise transport of passengers on city buses, trams and trolley buses. Republika Srpska has neither trams nor trolley bus lines.

In the bulletin the area of telecommunications is presented by basic indicators on post, telegram and telephone traffic. Input data were obtained from monthly reports by firms, which are registered for these activities.

Data for letters and parcels in internal and international transport comprise: letters, special letters, valuable letters and parcels received for delivery, including delivery of magazines and newspapers sent to subscribers, excluding transit.

Domestic telegraph service covers only delivered telegrams, while the international services covers both, delivered and received telegrams.

4 - 1.1 Drumski, gradski, željeznicki i poštansko-telefonski promet

A. Drumski i gradski prevoz

	01. 2004	02. 2004	03. 2004	04. 2004
PRJEVOZ ROBE				
Predeni kilometri vozila, u 000	3.645	4.199	5.161	5.668
Prevezeno tona robe, u 000	131	149	194	214
Tonski kilometri, u 000	28.315	36.269	46.277	52.716
PRJEVOZ PUTNIKA				
Predeni kilometri vozila, u 000	5.991	6.234	6.636	6.514
Prevezeni putnici, u 000	1.711	1.897	2.163	2.147
Putnicki kilometri, u 000	88.863	88.043	114.419	122.573
GRADSKO - PRIGRADSKI SAOBRAĆAJ				
Predeni kilometri vozila, u 000	5.173	5.107	5.551	5.531
Prevezeni putnici, u 000	20.460	18.825	19.278	18.508

4 - 1.1 Highway, urban and railway transport and telecommunication services

A. Highway and urban transport

05. 2004	06. 2004	01-06.2004	
GOODS TRANSPORT			
5.700	5.948	30.321	Vehicle-kilometers covered, in thous.
236	218	1.143	Tons of goods transported, in thous.
54.777	53.851	272.205	Metric tons kilometers, in thous.
PASSENGER TRANSPORT			
6.882	6.663	38.920	Vehicle-kilometers covered, in thous.
2.276	2.095	12.289	Passenger transported, in thousands
132.525	128.681	675.104	Passenger-kilometers, in thousands
URBAN - SUBURBAN TRANSPORT			
5.616	5.347	32.325	Vehicle-kilometers covered, in thous.
19.194	18.036	114.301	Passenger transported, in thousands

4 - 1.1 Drumski, gradski, željeznički i poštansko-telefonski promet (nastavak)

B. Željeznički promet

	01. 2004	02. 2004	03. 2004	04. 2004
PRIJEVOZ ROBE				
Prevezeno tona robe, u 000	484	462	557	557
Tonski kilometri, u milionima	29	24	36	43
PRIJEVOZ PUTNIKA				
Prevezeni putnici, u 000	74	81	83	85
Putnicki kilometri, u milionima	4	4	4	5

C. Poštansko-telefonski promet

	01. 2004	02. 2004	03. 2004	04. 2004
Pismonosne pošiljke, u 000	5.862	4.192	4.580	5.469
Paketske pošiljke, u 000	30	31	33	28
Telefonski razgovori, u mil. impulsa	817	910	849	860
Mobilni telefon. razgovori, u 000 min.	16.525	14.613	16.116	16.279

4 - 1.1 Highway, urban and railway transport and telecommunication services
(continued)

B. Railway transport

05. 2004	06. 2004	01-06.2004	
GOODS TRANSPORT			
719	690	3.469	Tons of goods transported, in thous.
48	57	237	Metric tons kilometers, in millions
PASSENGER TRANSPORT			
99	97	519	Passenger transported, in thousands
5	5	26	Passenger-kilometers, in millions

C. Postal and telecommunication services

05. 2004	06. 2004	01-06.2004	
4.599	4.538	29.240	Number of letters, in thousands
29	25	175	Number of parcels
852	869	5.158	Telephone calls, in milion impulses
16.464	16.690	96.687	Cell phone calls, in 000 minutes

NIVO OBRADJE BOSNA I HERCEGOVINA

4 - 1.2 Indeksi u prometu / *Indices in transport*

A. Drumski i gradski promet / *Highway and urban transport*

	<u>01.04</u>	<u>02.04</u>	<u>03.04</u>	<u>04.04</u>	<u>05.04</u>	<u>06.04</u>	<u>1-06.2004</u>		
	01.03	02.03	03.03	04.03	05.03	06.03	1-06.2003		
	PRJIEVOZ ROBE				GOODS TRANSPORT				
Predeni kilometri vozila, u 000	160,6	154,8	152,7	149,9	144,5	152,4	151,7	<i>Vehicle-kilometers covered, in thous.</i>	
Prevezeno tona robe, u 000	159,7	146,0	152,8	143,7	156,3	134,7	147,8	<i>Tons of goods transported, in thous.</i>	
Tonski kilometri, u 000	157,1	179,1	181,1	182,0	184,7	189,7	180,5	<i>Metric tons kilometers, in thous.</i>	
	PRJIEVOZ PUTNIKA				PASSENGER TRANSPORT				
Predeni kilometri vozila, u 000	110,1	116,7	117,5	110,5	113,2	107,1	112,4	<i>Vehicle-kilometers covered, in thous.</i>	
Prevezeni putnici, u 000	103,6	105,8	119,5	111,0	115,3	111,0	111,2	<i>Passenger transported, in thousands</i>	
Putnicki kilometri, u 000	115,0	119,4	152,8	149,4	154,0	144,1	139,7	<i>Passenger-kilometers, in thousands</i>	
	GRADSKO - PRIGRADSKI				URBAN - SUBURBAN TRANSPORT				
Predeni kilometri vozila, u 000	106,2	104,5	102,8	105,1	102,3	106,2	104,5	<i>Vehicle-kilometers covered, in thous.</i>	
Prevezeni putnici, u 000	117,2	99,8	97,6	99,7	98,8	102,4	102,3	<i>Passenger transported, in thousands</i>	

4 - 1.2 Indeksi u saobraćaju / Indices in transport

B. Željeznički prevoz / Railway transport

	<u>01.04</u>	<u>02.04</u>	<u>03.04</u>	<u>04.04</u>	<u>05.04</u>	<u>06.04</u>	<u>1-06.2004</u>		
	<u>01.03</u>	<u>02.03</u>	<u>03.03</u>	<u>04.03</u>	<u>05.03</u>	<u>06.03</u>	<u>1-06.2003</u>		
	PRILJEVOZ ROBE				GOODS TRANSPORT				
Prevezeno tona robe, u 000	144,0	135,9	133,9	120,3	147,6	157,9	139,9	Tons of goods transported, in thous.	
Tonski kilometri, u milionima	223,7	145,2	211,8	155,3	171,8	343,5	199,4	Metric tons kilometers, in millions	
	PRILJEVOZ PUTNIKA				PASSENGER TRANSPORT				
Prevezeni putnici, u 000	75,5	106,6	83,0	101,2	112,5	102,1	95,9	Passenger transported, in thousands	
Putnicki kilometri, u milionima	83,5	111,6	90,2	136,7	139,5	110,0	110,2	Passenger-kilometers, in millions	

	<u>01.04</u>	<u>02.04</u>	<u>03.04</u>	<u>04.04</u>	<u>05.04</u>	<u>06.04</u>	<u>1-06.2004</u>	
	<u>01.03</u>	<u>02.03</u>	<u>03.03</u>	<u>04.03</u>	<u>05.03</u>	<u>06.03</u>	<u>1-06.2003</u>	
Pismonosne pošiljke, u 000	116,7	89,1	96,4	109,2	100,9	89,8	100,5	Number of letters, in thousands
Paketske pošiljke, u 000	130,2	152,3	114,4	92,3	127,5	137,4	122,6	Number of parcels
Telefonski razgovori, u mil. impulsa	94,4	117,6	97,2	97,7	94,5	100,0	99,9	Telephone calls, in milion impulses
Mobilni telefon. razgovori, u 000 min	108,3	107,5	103,0	101,1	97,4	98,3	102,3	Cell phone calls, in 000 minutes

4 - 1.3 Učešća entiteta u drumskom, gradskom, željezničkom i PTT prometu (%)

Shares of the Entities in road, urban railway transport and telecommunication services

A. Drumski i gradski promet / Highway and urban transport

	2002			2003			01-06.2004					
	Fed.BiH	RS	Brcko Distrikt	Fed.BiH	RS	Brcko Distrikt	Fed.BiH	RS	Brcko Distrikt			
	PRUIEVOZ ROBE						GOODS TRANSPORT					
Pređeni kilometri vozila, u 000	66,1	33,5	0,4	60,0	39,9	0,1	73,0	26,9	0,1	<i>Vehicle-kilometers covered, in thous.</i>		
Prevezeno tona robe, u 000	69,2	30,6	0,2	77,1	22,8	0,1	86,2	13,7	0,1	<i>Tons of goods transported, in thous.</i>		
Tonski kilometri, u 000	70,5	29,4	0,1	68,0	31,9	0,0	81,9	18,0	0,0	<i>Metric tons kilometers, in thous.</i>		
	PRUIEVOZ PUTNIKA						PASSENGER TRANSPORT					
Pređeni kilometri vozila, u 000	56,8	40,8	2,4	57,9	40,9	1,1	60,0	37,1	2,9	<i>Vehicle-kilometers covered, in thous.</i>		
Prevezeni putnici, u 000	64,8	31,5	3,7	66,8	29,3	3,8	71,4	24,1	4,5	<i>Passenger transported, in thousands</i>		
Putnicki kilometri, u 000	44,1	54,7	1,2	52,7	46,4	0,9	65,3	34,2	0,6	<i>Passenger-kilometers, in thousands</i>		
	GRADSKO - PRIGRADSKI SAOBRAĆAJ						URBAN - SUBURBAN TRANSPORT					
Pređeni kilometri vozila, u 000	69,8	28,9	1,3	69,9	29,3	0,8	70,3	26,4	3,4	<i>Vehicle-kilometers covered, in thous.</i>		
Prevezeni putnici, u 000	91,4	8,3	0,3	92,1	7,5	0,4	92,1	7,4	0,5	<i>Passenger transported, in thousands</i>		

4 - 1.3 Učešća entiteta u drumskom, gradskom, željezničkom i PTT prometu (%)

Shares of the Entities in road, urban railway transport and telecommunication services

B. Željeznički promet / Railway transport

	2002			2003			01-06.2004			
	Fed.BiH	RS	Brcko Distrikt	Fed.BiH	RS	Brcko Distrikt	Fed.BiH	RS	Brcko Distrikt	
	PRJIEVOZ ROBE			GOODS TRANSPORT						
Prevezeno tona robe, u 000	82,4	17,6	0,0	79,0	21,0	0,0	71,2	28,8	0,0	<i>Tons of goods transported, in thous.</i>
Tonski kilometri, u milionima	57,3	42,7	0,0	66,9	33,1	0,0	70,8	29,2	0,0	<i>Metric tons kilometers, in millions</i>
	PRJIEVOZ PUTNIKA			PASSENGER TRANSPORT						
Prevezeni putnici, u 000	19,6	80,4	0,0	22,3	77,7	0,0	20,2	79,8	0,0	<i>Passenger transported, in thousands</i>
Putnicki kilometri, u milionima	28,6	71,4	0,0	35,2	64,8	0,0	39,1	60,9	0,0	<i>Passenger-kilometers, in millions</i>

	2002			2003			01-06.2004			
	Fed.BiH	RS	Brcko Distrikt	Fed.BiH	RS	Brcko Distrikt	Fed.BiH	RS	Brcko Distrikt	
Pismonosne pošiljke, u 000	72,7	25,4	1,9	76,3	21,9	1,8	75,9	22,8	1,3	<i>Number of letters, in thousands</i>
Paketske pošiljke, u 000	53,4	44,8	1,8	73,4	24,8	1,8	74,8	23,3	1,9	<i>Number of parcels</i>
Telefonski razgovori, u mil. impulsa	53,0	44,4	2,5	55,6	42,8	1,6	65,7	34,3	0,0	<i>Telephone calls, in million impulses</i>
Mobilni telefon. razgovori, u 000 min.	100,0	0,0	0,0	100,0	0,0	0,0	100,0	0,0	0,0	<i>Cell phone calls, in 000 minutes</i>

4 - 2.1 Drumski, gradski, željeznički i poštansko-telefonski promet

A. Drumski i gradski promet

	01. 2004	02. 2004	03. 2004	04. 2004
PRIJEVOZ ROBE				
Predeni kilometri vozila, u 000	2.790	3.021	3.747	4.165
Prevezeno tona robe, u 000	120	130	170	190
Tonski kilometri, u 000	23.518	29.514	37.655	43.968
PRIJEVOZ PUTNIKA				
Predeni kilometri vozila, u 000	3.556	3.666	3.940	3.963
Prevezeni putnici, u 000	1.227	1.290	1.517	1.556
Putnicki kilometri, u 000	51.684	50.394	74.820	82.800
GRADSKO - PRIGRADSKI SAOBRAĆAJ				
Predeni kilometri vozila, u 000	3.796	3.478	3.810	3.886
Prevezeni putnici, u 000	19.147	17.275	17.594	16.938

4 - 2.1 Highway, urban and railway transport and telecommunication services

A. Highway and urban transport

05. 2004	06. 2004	01-06.2004	
GOODS TRANSPORT			
4.102	4.317	22.142	Vehicle-kilometers covered, in thous.
201	174	985	Tons of goods transported, in thous.
44.674	43.737	223.066	Metric tons kilometers, in thous.
PASSENGER TRANSPORT			
4.182	4.056	23.363	Vehicle-kilometers covered, in thous.
1.650	1.535	8.775	Passenger transported, in thousands
92.200	88.860	440.758	Passenger-kilometers, in thousands
URBAN - SUBURBAN TRANSPORT			
3.916	3.824	22.710	Vehicle-kilometers covered, in thous.

4 - 2.1 Drumski, gradski, željeznički i poštansko-telefonski promet (nastavak)

B. Željeznički promet

	01. 2004	02. 2004	03. 2004	04. 2004
PRIJEVOZ ROBE				
Prevezeno tona robe, u 000	414	356	399	391
Tonski kilometri, u milionima	22	16	26	30
PRIJEVOZ PUTNIKA				
Prevezeni putnici, u 000	19	15	16	17
Putnicki kilometri, u milionima	2	1	1	2

C. Poštansko-telefonski promet

	01. 2004	02. 2004	03. 2004	04. 2004
Pismonosne pošiljke, u 000	4.850	3.204	3.536	3.603
Paketske pošiljke, u 000	25	23	22	22
Telefonski razgovori, u mil. impulsa	498	549	595	577
Mobilni telefon. razgovori, u 000 min.	16.525	14.613	16.116	16.279

4 - 2.1 Highway, urban and railway transport and telecommunication services
(continued)

B. Railway transport

05. 2004	06. 2004	01-06.2004	
GOODS TRANSPORT			
471	438	2.469	Tons of goods transported, in thous.
31	42	167	Metric tons kilometers, in millions
PASSENGER TRANSPORT			
19	19	105	Passenger transported, in thousands
2	2	10	Passenger-kilometers, in millions

C. Postal and telecommunication services

05. 2004	06. 2004	01-06.2004	
3.529	3.479	22.201	Number of letters, in thousands
21	18	131	Number of parcels
583	588	3.390	Telephone calls, in milion impulses
16.464	16.690	96.687	Cell phone calls, in 000 minutes

4 -2.2 Indeksi u prometu / *Indices in transport*

A. Drumski i gradski promet / *Highway and urban transport*

	01.04	02.04	03.04	04.04	05.04	06.04	01-06.2004		
	01.03	02.03	03.03	04.03	05.03	06.03	01-06.2003		
	PRJEVOZ ROBE			GOODS TRANSPORT					
Predeni kilometri vozila, u 000	192,5	186,4	184,4	179,0	176,4	176,5	181,5	<i>Vehicle-kilometers covered, in thous.</i>	
Prevezeno tona robe, u 000	173,9	149,4	166,7	158,3	170,3	135,9	157,9	<i>Tons of goods transported, in thous.</i>	
Tonski kilometri, u 000	181,5	209,2	211,8	216,9	225,7	220,0	212,9	<i>Metric tons kilometers, in thous.</i>	
	PRJEVOZ PUTNIKA			PASSENGER TRANSPORT					
Predeni kilometri vozila, u 000	113,3	121,5	124,6	120,3	121,7	113,2	119,0	<i>Vehicle-kilometers covered, in thous.</i>	
Prevezeni putnici, u 000	105,6	104,7	123,8	122,8	122,2	118,2	116,5	<i>Passenger transported, in thousands</i>	
Putnicki kilometri, u 000	134,3	139,6	196,2	195,9	202,5	185,0	177,3	<i>Passenger-kilometers, in thousands</i>	
	GRADSKO - PRIGRADSKI SAOB			URBAN - SUBURBAN TRANSPORT					
Predeni kilometri vozila, u 000	111,0	105,2	103,7	105,9	102,8	107,6	106,0	<i>Vehicle-kilometers covered, in thous.</i>	
Prevezeni putnici, u 000	118,6	99,8	99,2	99,6	99,2	102,0	102,9	<i>Passenger transported, in thousands</i>	

4 - 2.2 Indeksi u prometu / Indices in transport

B. Željeznički promet / Railway transport

	01.04	02.04	03.04	04.04	05.04	06.04	01-06.2004		
	01.03	02.03	03.03	04.03	05.03	06.03	01-06.2003		
	PRIJEVOZ ROBE				GOODS TRANSPORT				
Prevezeno tona robe, u 000	138,9	121,9	114,0	103,2	113,2	122,7	118,0	Tons of goods transported, in thous.	
Tonski kilometri, u milionima	233,4	136,4	226,9	191,1	136,9	382,8	203,7	Metric tons kilometers, in millions	
	PRIJEVOZ PUTNIKA				PASSENGER TRANSPORT				
Prevezeni putnici, u 000	82,6	93,8	80,0	73,9	86,4	105,6	86,1	Passenger transported, in thousands	
Putnicki kilometri, u milionima	132,3	146,7	135,5	122,0	147,7	170,1	141,9	Passenger-kilometers, in millions	

C. Poštansko-telefonski promet / Postal and telecommunication services

	01.04	02.04	03.04	04.04	05.04	06.04	01-06.2004	
	01.03	02.03	03.03	04.03	05.03	06.03	01-06.2003	
Pismonosne pošiljke, u 000	127,3	94,1	100,9	93,9	103,3	87,9	101,2	Number of letters, in thousands
Paketske pošiljke, u 000	178,6	164,3	110,0	95,7	123,5	128,6	128,4	Number of parcels
Telefonski razgovori, u mil. impulsa	103,8	125,9	127,4	119,5	113,0	119,8	118,0	Telephone calls, in milion impulses
Mobilni telefon. razgovori, u 000 min	108,3	107,5	103,0	101,1	97,4	98,3	102,3	Cell phone calls, in 000 minutes

4 - 3.1 Drumski, gradski, željeznicki i poštansko-telefonski promet**A. Drumski i gradski promet**

	01. 2004	02. 2004	03. 2004	04. 2004
PRIJEVOZ ROBE				
Predeni kilometri vozila, u 000	848	1.172	1.412	1.500
Prevezeno tona robe, u 000	11	19	24	24
Tonski kilometri, u 000	4.791	6.750	8.617	8.742
PRIJEVOZ PUTNIKA				
Predeni kilometri vozila, u 000	2.327	2.370	2.484	2.347
Prevezeni putnici, u 000	423	500	523	507
Putnicki kilometri, u 000	36.601	36.845	38.967	39.180
GRADSKO - PRIGRADSKI SAOBRAĆAJ				
Predeni kilometri vozila, u 000	1.277	1.436	1.534	1.446
Prevezeni putnici, u 000	1.253	1.444	1.562	1.486

4 - 3.1 Highway, urban and railway transport and telecommunication services

A. Highway and urban transport

	05. 2004	06. 2004	01-06.2004	
GOODS TRANSPORT				
	1.594	1.626	8.152	Vehicle-kilometers covered, in thous.
	35	44	157	Tons of goods transported, in thous.
	10.095	10.106	49.101	Metric tons kilometers, in thous.
PASSENGER TRANSPORT				
	2.486	2.413	14.427	Vehicle-kilometers covered, in thous.
	527	478	2.958	Passenger transported, in thousands
	39.753	39.270	230.616	Passenger-kilometers, in thousands
URBAN - SUBURBAN TRANSPORT				
	1.494	1.339	8.526	Vehicle-kilometers covered, in thous.
	1.480	1.251	8.476	Passenger transported, in thousands

4 - 3.1 Drumski, gradski, željeznički i poštansko-telefonski promet (nastavak)

B. Željeznički promet

	01. 2004	02. 2004	03. 2004	04. 2004
PRIJEVOZ ROBE				
Prevezeno tona robe, u 000	70	106	158	166
Tonski kilometri, u milionima	6	8	11	13
PRIJEVOZ PUTNIKA				
Prevezeni putnici, u 000	55	66	67	68
Putnicki kilometri, u milionima	2	3	3	3

C. Poštansko-telefonski promet

	01. 2004	02. 2004	03. 2004	04. 2004
Pismonosne pošiljke, u 000	938	918	977	1.802
Paketske pošiljke, u 000	4	7	10	6
Telefonski razgovori, u mil. impulsa	319	361	254	283
Mobilni telefon. razgovori, u 000 min.				

4 - 3.1 Highway, urban and railway transport and telecommunication services
(continued)

B. Railway transport

	05. 2004	06. 2004	01-06.2004
GOODS TRANSPORT			
248	252	1.000	Tons of goods transported, in thous.
17	14	69	Metric tons kilometers, in millions
PASSENGER TRANSPORT			
80	78	414	Passenger transported, in thousands
3	3	16	Passenger-kilometers, in millions

C. Postal and telecommunication services

	05. 2004	06. 2004	01-06.2004
1.022	1.010	6.667	Number of letters, in thousands
7	6	41	Number of parcels
269	281	1.768	Telephone calls, in milion impulses
			Cell phone calls, in 000 minutes

NIVO OBRADE REPUBLIKA SRPSKA

4 -3.2 Indeksi u prometu / Indices in transport

A. Drumski i gradski promet / Highway and urban transport

	<u>01.04</u>	<u>02.04</u>	<u>03.04</u>	<u>04.04</u>	<u>05.04</u>	<u>06.04</u>	<u>01-06.2004</u>	
	01.03	02.03	03.03	04.03	05.03	06.03	01-06.2003	
	PRIJEVOZ ROBE			GOODS TRANSPORT				
Predeni kilometri vozila, u 000	104,3	108,3	105,2	103,7	98,8	111,8	105,2	Vehicle-kilometers covered, in thous.
Prevezeno tona robe, u 000	84,6	126,7	96,0	82,8	106,1	129,4	105,4	Tons of goods transported, in thous.
Tonski kilometri, u 000	94,8	110,2	110,8	100,6	102,4	119,0	106,7	Metric tons kilometers, in thous.
	PRIJEVOZ PUTNIKA			PASSENGER TRANSPORT				
Predeni kilometri vozila, u 000	105,7	106,3	103,3	92,5	96,7	93,8	99,4	Vehicle-kilometers covered, in thous.
Prevezeni putnici, u 000	97,5	102,9	102,3	95,5	98,9	89,3	97,6	Passenger transported, in thousands
Putnicki kilometri, u 000	96,9	101,2	109,2	101,8	100,7	97,3	101,0	Passenger-kilometers, in thousands
	GRADSKO - PRIGRADSKI SAOBRAĆAJ			URBAN - SUBURBAN TRANSPORT				
Predeni kilometri vozila, u 000	90,5	93,6	91,1	92,9	91,9	93,6	92,3	Vehicle-kilometers covered, in thous.
Prevezeni putnici, u 000	98,6	96,5	79,8	103,5	94,1	104,4	94,9	Passenger transported, in thousands

4 - 3.2 Indeksi u prometu / Indices in transport

B. Željeznički promet / Railway transport

	<u>01.04</u>	<u>02.04</u>	<u>03.04</u>	<u>04.04</u>	<u>05.04</u>	<u>06.04</u>	<u>01-06.2004</u>		
	01.03	02.03	03.03	04.03	05.03	06.03	01-06.2003		
	PRIJEVOZ ROBE				GOODS TRANSPORT				
Prevezeno tona robe, u 000	184,2	220,8	239,4	197,6	349,3	315,0	258,4	Tons of goods transported, in thous.	
Tonski kilometri, u milionima	195,9	166,7	183,1	108,3	332,0	263,0	189,7	Metric tons kilometers, in millions	
	PRIJEVOZ PUTNIKA				PASSENGER TRANSPORT				
Prevezeni putnici, u 000	73,3	110,0	83,8	111,5	121,2	101,3	98,8	Passenger transported, in thousands	
Putnicki kilometri, u milionima	62,4	100,0	75,8	145,5	134,1	86,9	96,3	Passenger-kilometers, in millions	

C. Poštansko-telefonski promet / Postal and telecommunication services

	<u>01.04</u>	<u>02.04</u>	<u>03.04</u>	<u>04.04</u>	<u>05.04</u>	<u>06.04</u>	<u>01-06.2004</u>	
	01.03	02.03	03.03	04.03	05.03	06.03	01-06.2003	
Pismonosne pošiljke, u 000	84,8	76,9	83,1	165,5	98,2	99,1	100,6	Number of letters, in thousands
Paketske pošiljke, u 000	50,0	122,9	126,8	80,7	150,0	160,7	106,7	Number of parcels
Telefonski razgovori, u mil. impulsa	86,9	113,0	66,0	75,5	74,6	78,5	81,6	Telephone calls, in milion impulses
Mobilni telefon. razgovori, u 000 min.								Cell phone calls, in 000 minutes

5. TURIZAM I UGOSTITELJSTVO
TOURISM, HOTELS AND
RESTAURANTS

TURIZAM

Metodološka objašnjenja

Podaci o turističkom prometu (dolasci i nocenja) su rezultat statističkih istraživanja koja se provode u entitetskim zavodima za statistiku, a dobijeni su na osnovu mjesečnih izvještaja koje dostavljaju poslovni subjekti koji se bave pružanjem smještajnih usluga turistima. Izvještaji se sastavljaju na osnovu evidencija u knjigama gostiju.

Podacima je obuhvaćen broj dolazaka i nocenja, a ne broj turista.

Turistom se smatra svaka osoba koja putuje u neko mjesto izvan svoga prebivališta i provede najmanje jednu noc u ugostiteljskom ili nekom drugom objektu za smještaj gostiju, a motiv boravka u ugostiteljskom objektu može biti: odmor, poslovi (kongresi, sajmovi i izložbe, misije međunarodnih organizacija i sl.), zdravlje, učestvovanje u sportskim aktivnostima i sl.

Domacim turistom se smatra svaka osoba sa prebivalištem u BiH koja u nekom mjestu u BiH, izvan mjesta svoga prebivališta, provede najmanje jednu noc u ugostiteljskom ili drugom objektu za smještaj gostiju.

Strani turist je svaka osoba s prebivalištem izvan BiH koja privremeno boravi u BiH i koja provede najmanje jednu noc u ugostiteljskom ili drugom objektu za smještaj gostiju.

UGOSTITELJSTVO

Metodološka objašnjenja

Podaci o prometu u ugostiteljstvu prikupljeni su redovnim tromjesečnim izvještajima koja popunjavaju preduzeca u Federaciji BiH i Republici Srpskoj, a koja obavljaju ugostiteljsku djelatnost.

Ugostiteljska djelatnost je djelatnost pripremanje hrane i pružanja usluga prehrane, pripremanja i usluživanja pica i napitaka i pružanja smještajnih usluga.

Promet u ugostiteljstvu obuhvata vrijednost izvršenih ugostiteljskih usluga-posluživanja hranom, picima, smještaja i ostalih usluga koje se uobicajeno pružaju uz osnovne ugostiteljske usluge.

TOURISM

Notes on Methodology

Data on tourist turnover (number of guests and overnight stays) are collected from the monthly reports by business entities or parts of business entities, which provide accommodation services to tourists or act as agencies. The reports are usually made on the basis of registration records in guest books.

Data cover the number of arrivals and the number of guests and overnight stays.

A tourist is considered any person travelling outside of his place of permanent residence, and spending at least one night in catering or some other accommodation facility for one of the following reasons: rest, business, (congresses, fairs, exhibitions, mission of international organisation etc), health and participation in sports activities.

A domestic tourist is a person with permanent residence in B&H spending at least one night at a location in Bosnia and Herzegovina outside his or her place of normal accommodation or other accommodation facilities for guests.

A foreign tourist is any person with permanent residence outside B&H, but that temporally resides in B&H and spends at least one night in catering or in some other accommodation facility.

CATERING

Notes on Methodology

Data related to turnover in catering are collected at regular quarterly reports made by the enterprises in Federation B&H and Serbs Republic carrying out catering activities.

Catering activity is activity of food preparations and nutrition services, preparing and serving drinks as well as accommodation services.

Catering turnover involves the value of carried out catering services – food serving, drinks, accommodation and other services usually in conjunction with primary catering services

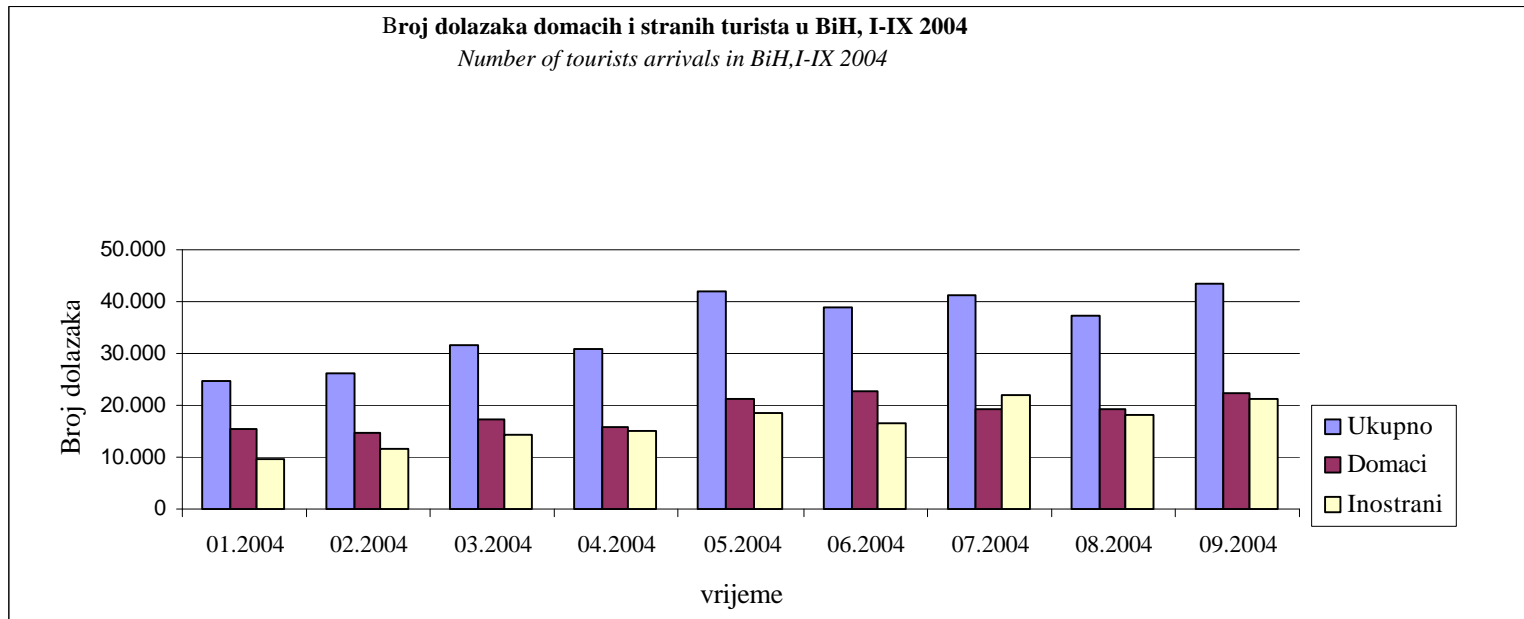
NIVO OBRADJE BOSNA I HERCEGOVINA
DATA PROCESSING - LEVEL BOSNIA AND HERZEGOVINA

5 -1.1 Dolasci turista po zemlji prebivališta / Tourist arrivals by country of residence

Dolasci turista po zemlji prebivališta / Tourist arrivals by country of residence											
	01.2004	02.2004	03.2004	04.2004	05.2004	06.2004	07.2004	08.2004	09.2004	01-06.2004	
Ukupno	24.662	26.202	31.699	30.646	41.899	38.873	41.330	37.258	43.551	316.120	Total
Domaci	15.209	14.582	17.378	15.742	21.195	22.513	19.241	19.080	22.368	167.308	Domestic
Inostrani	9.453	11.659	14.321	14.904	18.617	16.360	22.089	18.178	21.183	146.764	Foreign
Hrvatska	1.995	2.070	2.523	2.209	2.937	2.478	3.389	2.291	2.577	22.469	Croatia
Srbija I Crna Gora	3.507	4.080	4.549	3.552	4.789	3.943	4.521	3.170	4.274	36.385	Serbia and Montenegro
Makedonija	161	158	211	294	222	266	347	167	299	2.125	Macedonia
Slovenija	813	1.162	1.459	1.303	1.676	1.658	2.074	1.841	2.065	14.051	Slovenia
Albanija	19	9	25	114	114	30	80	20	30	441	Albania
Austrija	298	390	534	756	685	589	870	589	738	5.449	Austria
Belgija	69	75	78	120	117	64	135	116	133	907	Belgium
Bugarska	20	32	193	93	84	36	58	137	67	720	Bulgaria
Ceška	15	42	65	59	104	189	523	607	533	2.137	Czech Republic
Danska	75	51	79	97	48	76	192	89	131	838	Denmark
Finska	17	28	30	119	52	95	45	32	47	465	Finland
Francuska	159	149	192	217	619	481	330	771	767	3.685	France
Grcka	28	45	45	225	99	117	168	39	84	850	Greece
Holandija	135	64	143	264	209	300	365	433	270	2.183	Netherlands
Irska	21	64	53	79	87	69	93	78	83	627	Ireland
Island	1	1	3	6	9	4	11	10	9	54	Iceland
Italija	366	357	607	872	1.465	804	1.263	1.708	2.513	9.955	Italy
Izrael	4	11	6	19	23	33	32	16	51	195	Israel
Luksemburg	4	3	2	13	14	6	5	6	8	61	Luxembourg
Mađarska	54	64	80	152	174	374	403	318	538	2.157	Hungary
Norveška	39	38	178	49	70	141	349	158	242	1.264	Norway
Poljska	48	33	20	23	102	363	594	1.265	431	2.879	Poland
Portugal	8	7	13	20	27	28	24	57	30	214	Portugal
Rumunija	36	62	49	110	58	48	86	25	73	547	Romania
Rusija	26	67	38	50	81	72	40	37	87	498	Russia
Njemačka	357	544	706	1.321	1.520	841	1.235	1.013	1.111	8.648	Germany
Slovačka	41	11	40	36	50	203	387	268	111	1.147	Slovakia
Španija	91	155	82	92	151	117	216	365	421	1.690	Spain
Švajcarska	31	60	87	116	134	152	306	136	160	1.182	Switzerland
Švedska	86	107	206	265	253	237	620	170	331	2.275	Sweden
Turska	125	308	223	736	529	729	842	375	282	4.149	Turkey
Velika Britanija	213	308	515	356	425	503	523	520	619	3.982	Great Britain
Ostale europske zemlje	56	121	192	184	216	119	232	288	405	1.813	Other in Europe
Australija	19	17	24	20	50	66	180	101	75	552	Australia
Egipat	4	10	10	11	15	4	17	7	5	83	Egypt
Iran	4	32	7	10	8	7	17	4	15	104	Iran
Japan	30	90	134	95	147	79	108	25	140	848	Japan
Kanada	42	59	104	58	97	108	200	72	120	860	Canada
Kina	17	69	12	15	9	7	26	11	30	196	China
Novi Zeland	3	5	9	7	18	19	19	25	11	116	New Zealand
SAD	278	431	704	548	808	673	820	573	852	5.687	USA
Ostale izvan europske zemlje	118	255	159	179	338	227	341	241	409	2.267	Other non European countries

NIVO OBRADJE BOSNA I HERCEGOVINA
DATA PROCESSING - LEVEL BOSNIA AND HERZEGOVINA

Grafikon 1:
Graph 1:



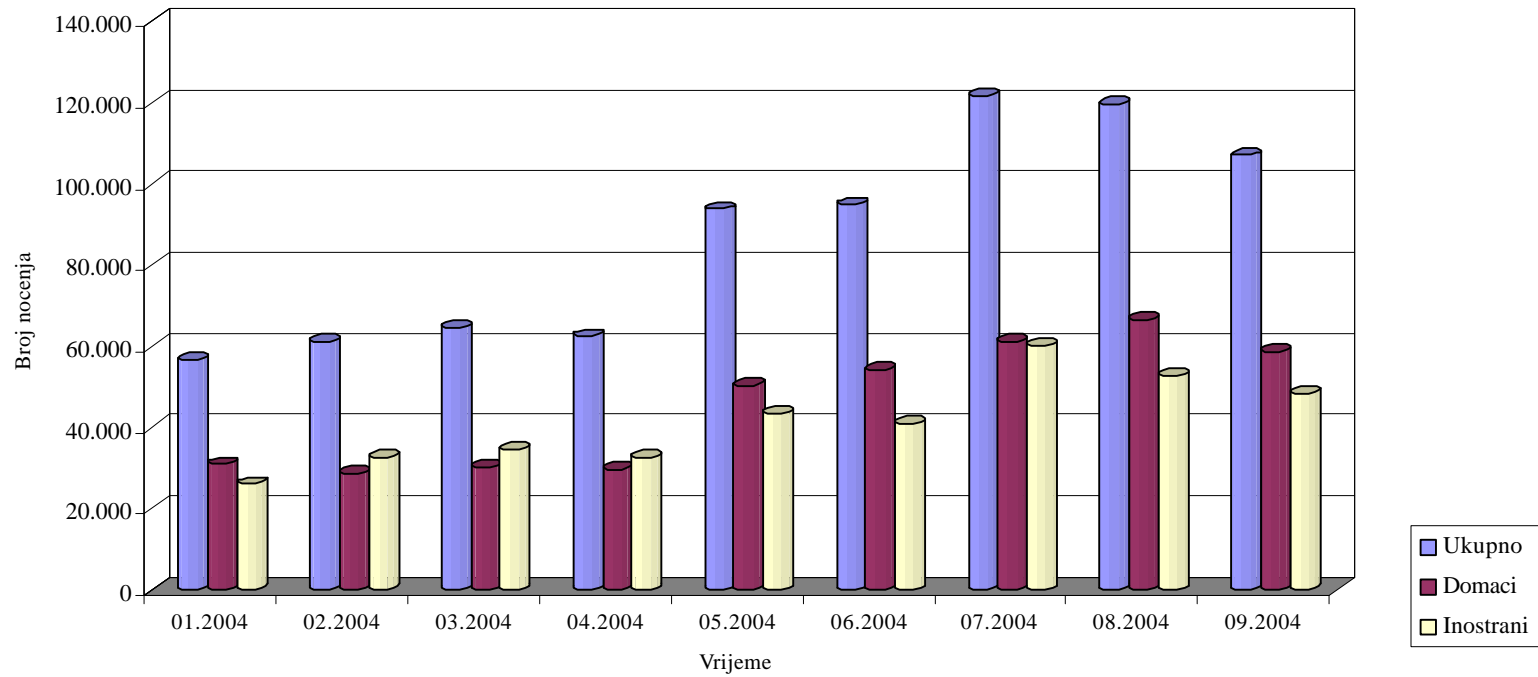
NIVO OBRADJE BOSNA I HERCEGOVINA
DATA PROCESSING - LEVEL BOSNIA AND HERZEGOVINA

5 -1.2 Nocenja turista po zemlji prebivališta / Tourist overnights by country of residence

	Nocenja turista po zemlji prebivališta / Tourist nights by country of residence										
	01.2004	02.2004	03.2004	04.2004	05.2004	06.2004	07.2004	08.2004	09.2004	01-09.2004	
Ukupno	56.875	60.967	64.710	62.409	93.840	94.879	121.595	119.619	107.129	782.023	Total
Domaci	30.893	28.531	30.011	29.812	50.435	54.088	61.334	66.705	58.754	410.563	Domestic
Inostrani	25.982	32.436	34.699	32.597	43.405	40.791	60.261	52.914	48.375	371.460	Foreign
Hrvatska	4.892	4.131	4.734	4.531	5.615	5.774	8.509	6.428	5.149	49.763	Croatia
Srbija i Crna Gora	12.453	14.773	13.178	7.102	12.054	9.594	9.832	7.586	9.038	95.610	Serbia and Montenegro
Makedonija	340	236	369	552	538	502	1.101	357	584	4.579	Macedonia
Slovenija	1.370	2.804	2.487	2.164	2.835	3.777	6.784	7.025	4.974	34.220	Slovenia
Albanija	36	30	67	254	2.292	85	264	62	58	3.148	Albania
Austrija	545	749	888	1.212	516	1.084	1.454	1.308	1.305	9.061	Austria
Belgija	123	226	128	337	214	102	328	235	340	2.033	Belgium
Bugarska	43	82	459	182	210	90	125	185	174	1.550	Bulgaria
Češka	26	107	161	158	349	768	2.280	3.085	3.313	10.247	Czech Republic
Danska	141	111	173	215	120	145	553	264	327	2.049	Denmark
Finska	59	46	63	323	144	214	82	80	92	1.103	Finland
Francuska	400	279	365	678	847	848	679	1.517	1.107	6.720	France
Grčka	55	103	86	297	326	229	543	68	167	1.874	Greece
Holandija	372	125	434	787	518	658	968	846	600	5.308	Netherlands
Irska	38	129	143	193	213	131	181	194	134	1.356	Ireland
Island	6	1	11	20	28	8	26	14	14	128	Iceland
Italija	877	799	1.375	1.910	2.212	1.925	2.361	3.467	3.713	18.639	Italy
Izrael	10	13	20	32	66	71	157	27	80	476	Israel
Luksemburg	4	5	3	18	36	11	6	8	18	109	Luxembourg
Mađarska	97	115	123	276	322	1.777	1.614	632	1.315	6.271	Hungary
Norveška	81	77	591	99	158	254	767	334	655	3.016	Norway
Poljska	155	78	42	40	279	1.940	3.814	7.556	2.144	16.048	Poland
Portugal	11	20	30	32	43	60	29	95	63	383	Portugal
Rumunija	61	94	120	239	118	130	242	139	195	1.338	Romania
Rusija	77	190	75	130	276	169	113	225	198	1.453	Russia
Njemačka	723	1.286	1.359	4.412	5.971	1.612	4.544	3.487	2.594	25.988	Germany
Slovačka	64	56	99	76	113	857	2.308	1.902	285	5.760	Slovakia
Španija	149	390	290	269	394	273	377	592	807	3.541	Spain
Švajcarska	61	18	163	317	361	261	569	340	332	2.422	Switzerland
Švedska	249	241	704	568	559	458	2.281	509	651	6.220	Sweden
Turska	287	1.399	481	1.487	1.736	2.357	1.916	763	753	11.179	Turkey
Velika Britanija	664	786	1.492	836	1.003	1.246	928	1.004	1.410	9.369	Great Britain
Ostale europske zemlje	77	250	389	243	514	234	495	446	742	3.390	Other in Europe
Australija	38	50	51	41	123	149	278	243	170	1.143	Australia
Egipat	17	23	35	18	50	8	154	25	23	353	Egypt
Iran	18	72	41	42	23	46	35	13	38	328	Iran
Japan	66	324	464	252	376	237	239	58	428	2.444	Japan
Kanada	135	123	477	129	208	271	334	195	362	2.234	Canada
Kina	22	141	12	19	13	15	37	14	43	316	China
Novi Zeland	8	11	20	13	46	40	43	62	25	268	New Zealand
SAD	802	1.140	1.982	1.457	1.833	1.677	1.838	1.542	2.402	14.673	USA
Ostale izvan europske zemlje	288	665	513	613	898	624	799	660	1.335	6.395	Other non European countries

Grafikon 2:
Graph 2:

Broj nocenja domacih i stranih turista u BiH,I-IX 2004
Number of domestic and foreign tourists nights in BiH,I-IX 2004



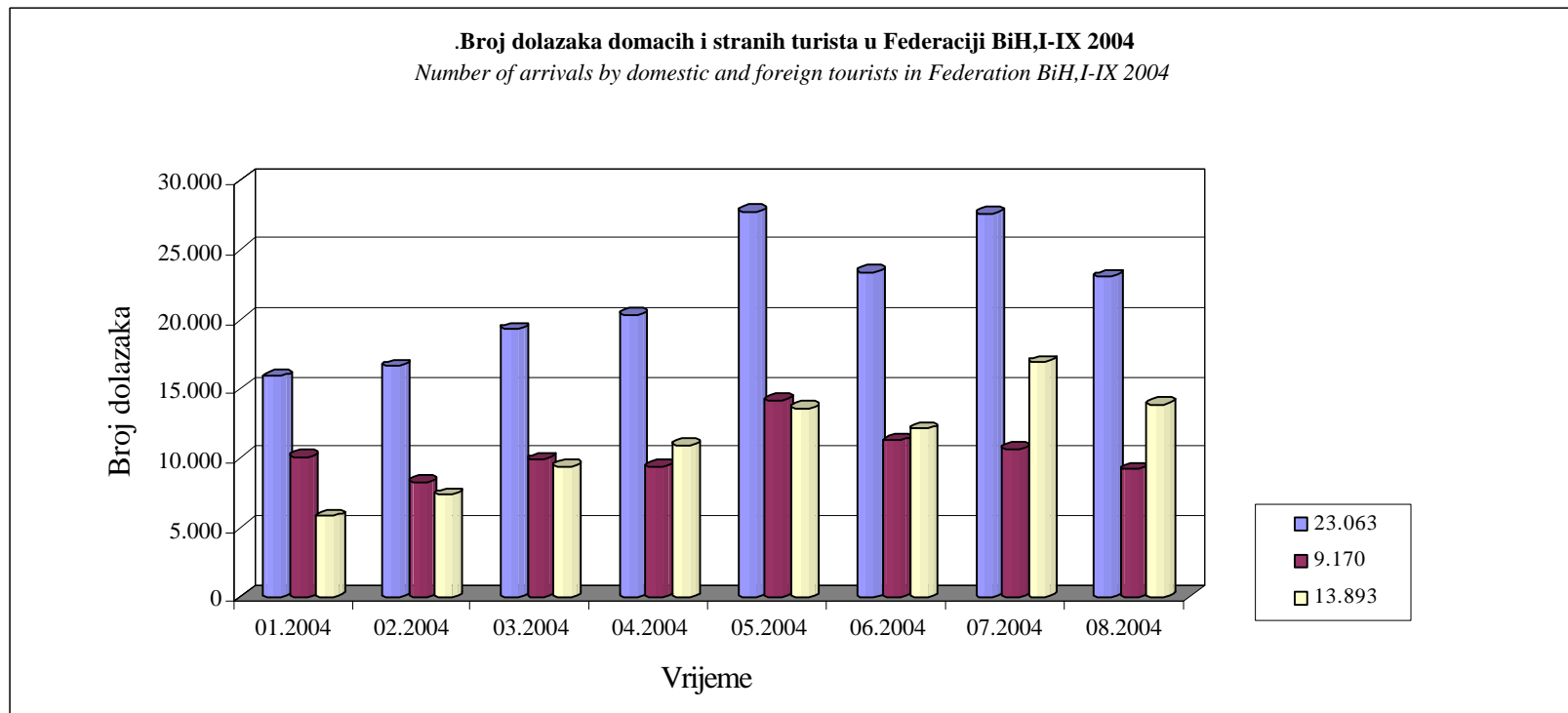
NIVO OBRADJE FEDERACIJA BiH
 DATA PROCESSING - LEVEL FEDERATION of B&H

5 -2.1 Dolasci turista po zemlji prebivališta / Tourist arrivals by country of residence

Dolasci turista po zemlji prebivališta / Tourist arrivals by country of residence											
	01.2004	02.2004	03.2004	04.2004	05.2004	06.2004	07.2004	08.2004	09.2004	01-09.2004	
Ukupno	15.901	16.622	19.276	20.312	27.732	23.385	27.593	23.063	26.743	200.627	Total
Domaci	10.097	8.250	9.896	9.386	14.141	11.283	10.682	9.170	10.599	93.504	Domestic
Inostrani	5.804	7.372	9.380	10.926	13.591	12.102	16.911	13.893	16.144	106.123	Foreign
Hrvatska	1.651	1.764	2.156	1.906	2.613	2.168	3.081	1.933	2.182	19.454	<i>Croatia</i>
Srbija I Crna Gora	908	1.174	1.593	1.495	1.659	1.572	1.703	1.297	1.660	13.061	Serbia and Monte Negro
Makedonija	141	122	169	214	162	195	174	123	237	1.537	<i>Macedonia</i>
Slovenija	661	858	1.117	1.030	1.324	1.416	1.804	1.506	1.803	11.519	<i>Slovenia</i>
Albanija	17	9	23	114	113	26	29	20	28	379	<i>Albania</i>
Austrija	241	314	375	462	538	486	785	473	585	4.259	<i>Austria</i>
Belgija	64	68	65	110	101	54	120	107	121	810	<i>Belgium</i>
Bugarska	13	28	126	90	30	18	50	132	35	522	<i>Bulgaria</i>
Ceška	12	39	53	54	77	159	466	564	510	1.934	<i>Czech Republic</i>
Danska	64	36	69	86	39	64	164	60	103	685	<i>Denmark</i>
Finska	11	21	23	106	50	75	44	30	36	396	<i>Finland</i>
Francuska	134	132	128	217	594	454	281	596	701	3.237	<i>France</i>
Grčka	22	42	29	104	40	49	54	24	42	406	<i>Greece</i>
Holandija	118	52	118	228	190	248	298	393	235	1.880	<i>Netherlands</i>
Irska	19	51	43	76	83	63	90	73	71	569	<i>Ireland</i>
Island	1		3	4	8	4	11	10	9	50	<i>Iceland</i>
Italija	278	260	482	716	1.325	604	1.125	1.267	2.254	8.311	<i>Italy</i>
Izrael	1	7	6	16	20	21	32	11	44	158	<i>Israel</i>
Luksemburg	4	3	2	8	14	6	5	6	8	56	<i>Luxembourg</i>
Madarska	50	57	59	124	163	342	367	280	465	1.907	<i>Hungary</i>
Norveška	28	24	127	41	63	124	305	108	156	976	<i>Norway</i>
Poljska	39	25	14	17	73	341	576	1.200	410	2.695	<i>Poland</i>
Portugal	6	7	11	19	19	23	19	53	30	187	<i>Portugal</i>
Rumunija	25	61	42	109	50	34	19	16	66	422	<i>Romania</i>
Rusija	49	22	31	62	36	25	29	60	60	314	<i>Russia</i>
Njemacka	313	440	562	1.145	1.338	674	997	795	930	7.194	<i>Germany</i>
Slovačka	37	7	21	16	32	180	365	258	67	983	<i>Slovakia</i>
Španija	78	141	65	82	135	104	191	336	392	1.524	<i>Spain</i>
Švajcarska	25	48	63	96	115	124	211	123	121	926	<i>Switzerland</i>
Švedska	79	82	171	234	196	212	551	137	270	1.932	<i>Sweden</i>
Turska	125	298	219	728	518	725	798	365	273	4.049	<i>Turkey</i>
Velika Britanija	150	214	310	266	307	384	457	445	458	2.991	<i>Great Britain</i>
Ostale europske zemlje	37	105	180	176	196	98	202	256	359	1.609	<i>Other in Europe</i>
Australija	15	14	23	19	44	58	164	97	58	492	<i>Australia</i>
Egipat	4	10	10	10	15	4	17	7	5	82	<i>Egypt</i>
Iran	4	32	7	10	8	6	17	4	15	103	<i>Iran</i>
Japan	26	66	104	82	139	67	77	22	115	698	<i>Japan</i>
Kanada	35	44	46	49	86	84	179	59	92	674	<i>Canada</i>
Kina	9	58	5	15	6	7	7	7	27	141	<i>China</i>
Novi Zeland	3	5	7	6	17	12	17	24	10	101	<i>New Zealand</i>
SAD	229	345	591	446	708	567	705	453	736	4.780	<i>USA</i>
Ostale izvan europske zemlje	107	247	139	168	317	209	326	191	359	2.063	<i>Other non European countries</i>

NIVO OBRADJE FEDERACIJA BiH
DATA PROCESSING - LEVEL FEDERATION of B&H

Grafikon 3:
Graph 3:



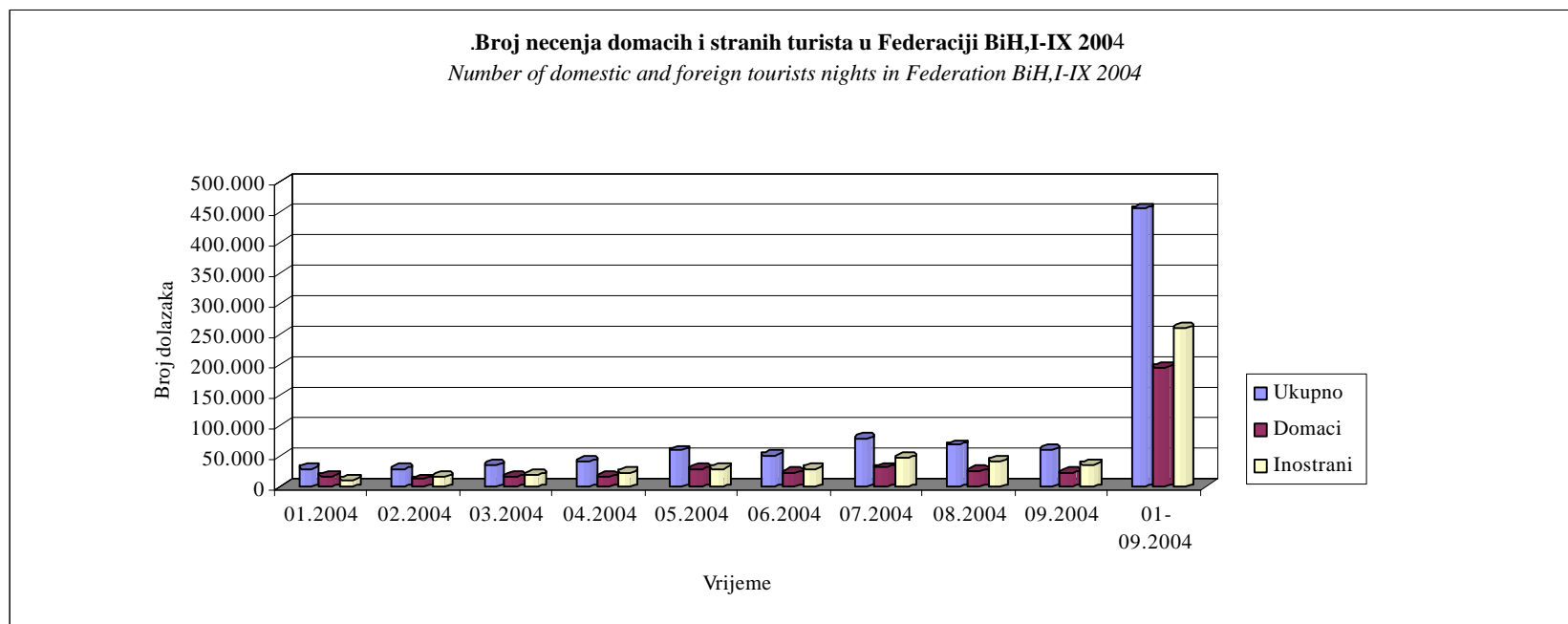
NIVO OBRADJE FEDERACIJA BiH
 DATA PROCESSING - LEVEL FEDERATION of B&H

5 -2.2 Nocenja turista po zemlji prebivališta / *Tourist overnights by country of residence*

	Nocenja turista po zemlji prebivališta / <i>Tourist nights by country of residence</i>										
	01.2004	02.2004	03.2004	04.2004	05.2004	06.2004	07.2004	08.2004	09.2004	01-09.2004	
Ukupno	30.242	28.865	35.872	41.103	59.454	52.645	79.132	68.865	60.021	456.199	Total
Domaci	18.267	12.767	16.030	16.480	28.947	22.790	31.023	26.584	22.985	195.873	Domestic
Inostrani	11.975	16.098	19.842	24.623	30.507	29.855	48.109	42.281	37.036	260.326	Foreign
Hrvatska	3390	3334	4087	4046	4931	5126	7692	5524	4115	42.245	<i>Croatia</i>
Srbija I Crna Gora	1335	1685	2540	2288	2755	2232	2858	2079	2926	20.698	<i>Serbia and Monte Negro</i>
Makedonija	283	197	309	405	343	380	644	248	454	3.263	<i>Macedonia</i>
Slovenija	1130	1714	2016	1799	2290	3425	6281	6339	4599	29.593	<i>Slovenia</i>
Albanija	30	30	65	254	2290	73	68	62	56	2.928	<i>Albania</i>
Austrija	452	633	729	842	312	938	1317	1129	1087	7.439	<i>Austria</i>
Belgija	117	216	115	307	190	88	307	225	325	1.890	<i>Belgium</i>
Bugarska	24	78	371	177	83	42	112	180	94	1.161	<i>Bulgaria</i>
Češka	23	102	132	147	192	708	2108	2995	3213	9.620	<i>Czech Republic</i>
Danska	121	85	156	201	105	129	516	148	265	1.726	<i>Denmark</i>
Finska	29	39	56	265	142	186	80	77	79	953	<i>Finland</i>
Francuska	355	251	276	583	815	802	566	1175	955	5.778	<i>France</i>
Grčka	40	98	67	162	99	114	207	41	98	926	<i>Greece</i>
Holandija	340	102	389	697	492	535	853	783	533	4.724	<i>Netherlands</i>
Irska	35	103	115	190	208	119	178	189	122	1.259	<i>Ireland</i>
Island	6		11	12	26	8	26	14	14	117	<i>Iceland</i>
Italija	717	657	1145	1672	2027	1624	2171	2428	3384	15.825	<i>Italy</i>
Izrael	2	9	20	29	59	50	157	19	72	417	<i>Israel</i>
Luksemburg	4	5	3	11	36	11	6	8	18	102	<i>Luxembourg</i>
Mađarska	90	106	101	240	307	1728	1575	575	1172	5.894	<i>Hungary</i>
Norveška	66	58	247	77	149	232	684	263	307	2.083	<i>Norway</i>
Poljska	143	54	33	33	192	1878	3790	7480	2115	15.718	<i>Poland</i>
Portugal	9	20	28	29	35	51	24	87	63	346	<i>Portugal</i>
Rumunija	35	93	110	238	101	98	42	46	180	943	<i>Romania</i>
Rusija		102	57	100	203	89	58	175	119	903	<i>Russia</i>
Njemačka	626	1110	1146	4137	5712	1312	4306	2448	2230	23.027	<i>Germany</i>
Slovačka	42	25	54	44	67	849	2217	1880	192	5.370	<i>Slovakia</i>
Španija	133	369	263	229	373	252	341	553	708	3.221	<i>Spain</i>
Švajcarska	52		125	233	335	200	429	317	225	1.916	<i>Switzerland</i>
Švedska	233	196	623	511	481	398	2158	467	537	5.604	<i>Sweden</i>
Turska	287	1389	476	1478	1721	2349	1769	751	742	10.962	<i>Turkey</i>
Velika Britanija	495	589	819	640	772	912	794	875	953	6.849	<i>Great Britain</i>
Ostale europske zemlje	56	233	375	231	483	194	442	355	655	3.024	<i>Other in Europe</i>
Australija	31	46	48	40	116	140	248	230	125	1.024	<i>Australia</i>
Egipat	17	23	35	17	50	8	154	25	23	352	<i>Egypt</i>
Iran	10	72	41	42	23	43	35	13	38	317	<i>Iran</i>
Japan	59	233	387	195	364	219	161	55	345	2.018	<i>Japan</i>
Kanada	106	102	90	116	194	203	288	164	269	1.532	<i>Canada</i>
Kina	12	130	5	19	9	15	16	9	40	255	<i>China</i>
Novi Zeland	8	11	14	12	45	24	41	61	24	240	<i>New Zealand</i>
SAD	712	1012	1769	1302	1612	1456	1648	1340	2185	13.036	<i>USA</i>
Ostale izvan europske zemlje	270	655	392	570	844	593	738	441	1162	5.665	<i>Other non European countries</i>

NIVO OBRADJE FEDERACIJA BiH
DATA PROCESSING - LEVEL FEDERATION of B&H

Grafikon 4:
Graph 4:



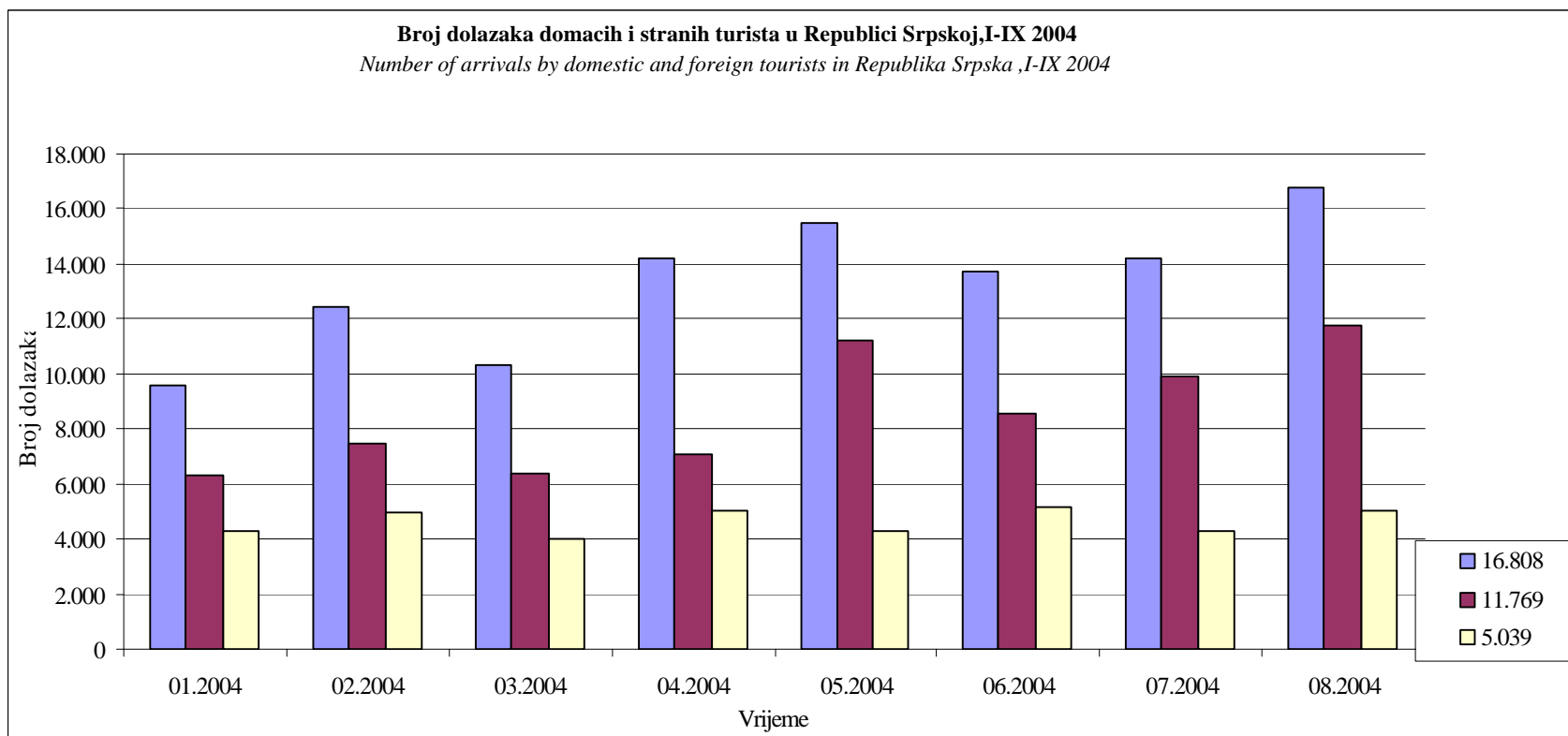
NIVO OBRADE REPUBLIKA SRPSKA

DATA PROCESSING - LEVEL REPUBLIC SRPSKA

5 -3.1 Dolasci turista po zemlji prebivališta / Tourist arrivals by country of residence

Dolasci turista po zemlji prebivališta / Tourist arrivals by country of residence											
	01.2004	02.2004	03.2004	04.2004	05.2004	06.2004	07.2004	08.2004	09.2004	01-09.2004	
Ukupno	8.761	9.580	12.423	10.334	14.167	15.488	13.737	14.195	16.808	115.493	Total
Domaci	5112	6.332	7.482	6.356	7.054	11.230	8.559	9.910	11.769	73.804	Domestic
Inostrani	3649	4.287	4.941	3.978	5.026	4.258	5.178	4.285	5.039	40.641	Foreign
Hrvatska	344	306	367	303	324	310	308	358	395	3.015	Croatia
Srbija I Crna Gora	2599	2.906	2.956	2.057	3.130	2.371	2.818	1.873	2.614	23.324	Serbia and Monte Negro
Makedonija	20	36	42	80	60	71	173	44	62	588	Macedonia
Slovenija	152	304	342	273	352	242	270	335	262	2.532	Slovenia
Albanija	2		2		1	4	51		2	62	Albania
Austrija	57	76	159	294	147	103	85	116	153	1.190	Austria
Belgija	5	7	13	10	16	10	15	9	12	97	Belgium
Bugarska	7	4	67	3	54	18	8	5	32	198	Bulgaria
Češka	3	3	12	5	27	30	57	43	23	203	Czech Republic
Danska	11	15	10	11	9	12	28	29	28	153	Denmark
Finska	6	7	7	13	2	20	1	2	11	69	Finland
Francuska	25	17	64		25	27	49	175	66	448	France
Grčka	6	3	16	121	59	68	114	15	42	444	Greece
Holandija	17	12	25	36	19	52	67	40	35	303	Netherlands
Irskaa	2	13	10	3	4	6	3	5	12	58	Ireland
Island		1		2	1					4	Iceland
Italija	88	97	125	156	140	200	138	441	259	1.644	Italy
Izrael	3	4		3	3	12		5	7	37	Israel
Luksemburg				5						5	Luxembourg
Mađarska	4	7	21	28	11	32	36	38	73	250	Hungary
Norveška	11	14	51	8	7	17	44	50	86	288	Norway
Poljska	9	8	6	6	29	22	18	65	21	184	Poland
Portugal	2		2	1	8	5	5	4		27	Portugal
Rumunija	11	1	7	1	8	14	67	9	7	125	Romania
Rusija	26	18	16	19	19	36	15	8	27	184	Russia
Njemačka	44	104	144	176	182	167	238	218	181	1.454	Germany
Slovačka	4	4	19	20	18	23	22	10	44	164	Slovakia
Španija	13	14	17	10	16	13	25	29	29	166	Spain
Švajcarska	6	12	24	20	19	28	95	13	39	256	Switzerland
Švedska	7	25	35	31	57	25	69	33	61	343	Sweden
Turska		10	4	8	11	4	44	10	9	100	Turkey
Velika Britanija	63	94	205	90	118	119	66	75	161	991	Great Britain
Ostale europske zemlje		16	12		20	21	30	32	46	204	Other in Europe
Australija	4	3	1	1	6	8	16	4	17	60	Australia
Egipat				1						1	Egypt
Iran						1				1	Iran
Japan	4	24	30	13	8	12	31	3	25	150	Japan
Kanada	7	15	58	9	11	24	21	13	28	186	Canada
Kina	8	11	7		3		19	4	3	55	China
Novi Zeland			2	1	1	7	2	1	1	15	New Zealand
SAD	49	86	113	102	100	106	115	120	116	907	USA
Ostale izvaneuropske zemlje		8	20		21	18	15	50	50	204	Other non European countries
	11			11							

Grafikon 5:
Graph 5:



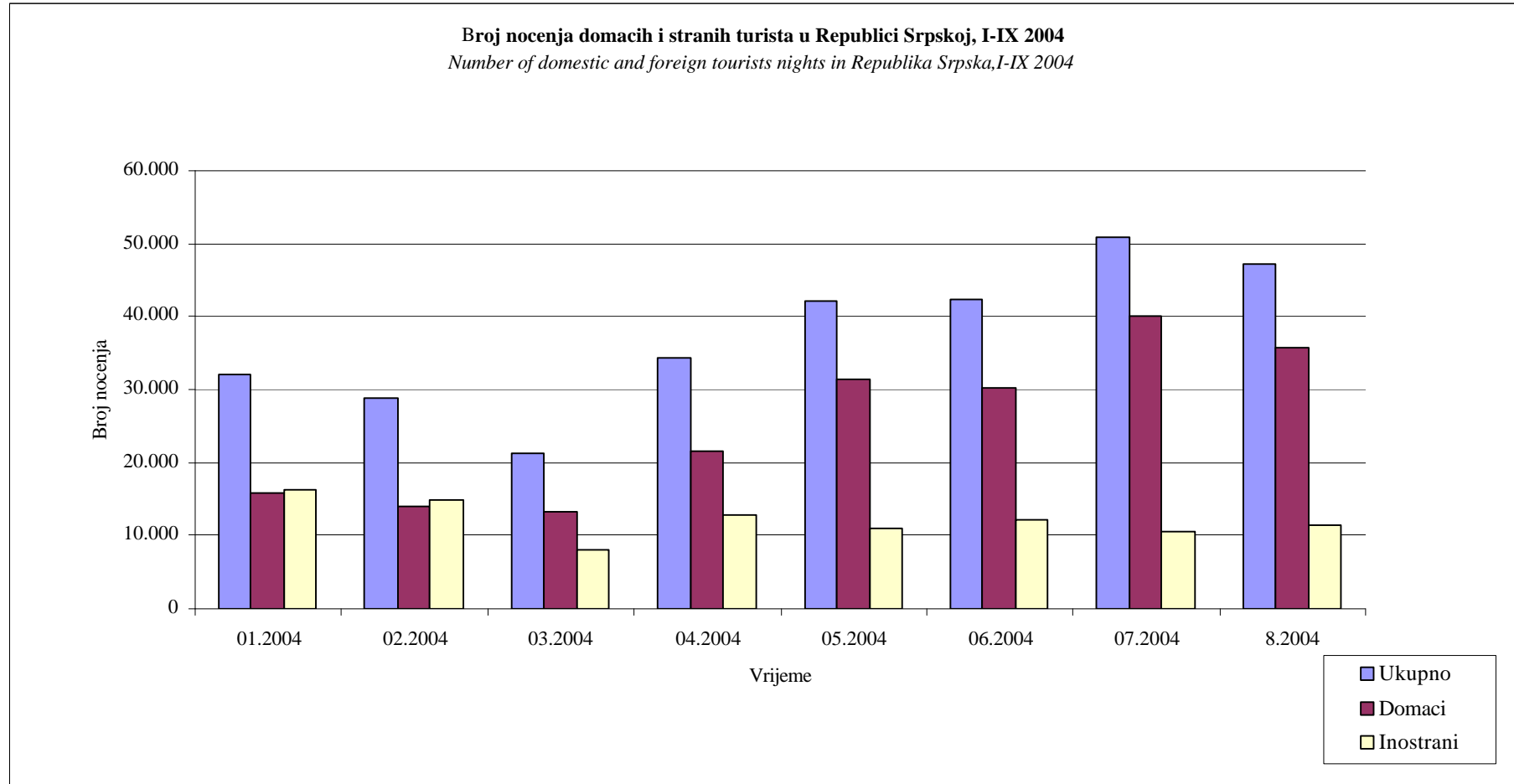
NIVO OBRADE REPUBLIKA SRPSKA
DATA PROCESSING - LEVEL REPUBLIC SRPSKA

5 -3.2 Nojewa turista po zemlji prebivališta / *Tourist overnights by country of residence*

	Nocenja turista po zemlji prebivališta / <i>Tourist nights by country of residence</i>										
	01.2004	02.2004	03.2004	04.2004	05.2004	06.2004	07.2004	8.2004	09.2004	01-09.2004	
Ukupno	26.633	32.102	28.838	21.306	34.386	42.234	42.463	50.754	47.108	325.824	Total
Domaci	12626	15.764	13.981	13.332	21.488	31.298	30.311	40.121	35.769	214.690	Domestic
Inostrani	14007	16.338	14.857	7.974	12.898	10.936	12.152	10.633	11.339	111.134	Foreign
Hrvatska	1502	797	647	485	684	648	817	904	1034	7.518	<i>Croatia</i>
Srbija I Crna Gora	11118	13088	10.638	4.814	9.299	7.362	6.974	5.507	6.112	74.912	<i>Serbia and Monte Negro</i>
Makedonija	57	39	60	147	195	122	457	109	130	1.316	<i>Macedonia</i>
Slovenija	240	1090	471	365	545	352	503	686	375	4.627	<i>Slovenia</i>
Albanija	6		2		2	12	196		2	220	<i>Albania</i>
Austrija	93	116	159	370	204	146	137	179	218	1.622	<i>Austria</i>
Belgija	6	10	13	30	24	14	21	10	15	143	<i>Belgium</i>
Bugarska	19	4	88	5	127	48	13	5	80	389	<i>Bulgaria</i>
Ceška	3	5	29	11	157	60	172	90	100	627	<i>Czech Republic</i>
Danska	20	26	17	14	15	16	37	116	62	323	<i>Denmark</i>
Finska	30	7	7	58	2	28	2	3	13	150	<i>Finland</i>
Francuska	45	28	89	95	32	46	113	342	152	942	<i>France</i>
Grčka	15	5	19	135	227	115	336	27	69	948	<i>Greece</i>
Holandija	32	23	45	90	26	123	115	63	67	584	<i>Netherlands</i>
Irska	3	26	28	3	5	12	3	5	12	97	<i>Ireland</i>
Island		1		8	2					11	<i>Iceland</i>
Italija	160	142	230	238	185	301	190	1.039	329	2.814	<i>Italy</i>
Izrael	8	4		3	7	21		8	8	59	<i>Israel</i>
Luksemburg				7						7	<i>Luxembourg</i>
Madarska	7	9	22	36	15	49	39	57	143	377	<i>Hungary</i>
Norveška	15	19	344	22	9	22	83	71	348	933	<i>Norway</i>
Poljska	12	24	9	7	87	62	24	76	29	330	<i>Poland</i>
Portugal	2		2	3	8	9	5	8		37	<i>Portugal</i>
Rumunija	26	1	10	1	17	32	200	93	15	395	<i>Romania</i>
Rusija	77	88	18	30	73	80	55	50	79	550	<i>Russia</i>
Njemacka	97	176	213	275	259	300	238	1.039	364	2.961	<i>Germany</i>
Slovacka	22	31	45	32	46	8	91	22	93	390	<i>Slovakia</i>
Španija	16	21	27	40	21	21	36	39	99	320	<i>Spain</i>
Švajcarska	9	18	38	84	26	61	140	23	107	506	<i>Switzerland</i>
Švedska	16	45	81	57	78	60	123	42	114	616	<i>Sweden</i>
Turska		10	5	9	15	8	147	12	11	217	<i>Turkey</i>
Velika Britanija	169	197	673	196	231	334	134	129	457	2.520	<i>Great Britain</i>
Ostale europske zemlje	21	17	14	12	31	40	53	91	87	366	<i>Other in Europe</i>
Australija	7	4	3	1	7	9	30	13	45	119	<i>Australia</i>
Egipat				1						1	<i>Egypt</i>
Iran	8					3				11	<i>Iran</i>
Japan	7	91	77	57	12	18	78	3	83	426	<i>Japan</i>
Kanada	29	21	387	13	14	68	46	31	93	702	<i>Canada</i>
Kina	10	11	7		4		21	5	3	61	<i>China</i>
Novi Zeland			6	1	1	16	2	1	1	28	<i>New Zealand</i>
SAD	90	128	213	155	221	221	190	202	217	1.637	<i>USA</i>
Ostale izvan europske zemlje	18	10	121	43	54	31	61	219	173	730	<i>Other non European countries</i>

NIVO OBRADE REPUBLIKA SRPSKA
DATA PROCESSING - LEVEL REPUBLIC SRPSKA

Grafikon 6:
Graph 6:



6. STANOVNIŠTVO
POPULATION

STANOVNIŠTVO

Metodološka objašnjenja

Ovdje se daju samo kraca objašnjenja definicija jedinice promatranja.

Definicija jedinice promatranja

U statistici je jedinica promatranja rođenih svako rodeno i mrtvorodeno dijete.

Kao živorodeno smatra se ono dijete koje poslije rođenja, čak i za najkrace vrijeme pokazuje znake života (disanje, odnosno kucanje srca) bez obzira na trajanje trudnoce majke. Ako dijete ubrzo po rođenju umre, onda se najprije registruje kao živorodeno, a zatim kao umrlo. Ako je dijete rodeno, odnosno izvadeno iz tijela majke bez ikakvih znakova života, tj. ako nije disalo niti pokazivalo neki drugi znak života, kao što je kucanje srca ili pokreti mišica, a nošeno je duže od 28 sedmica (približno 7 mjeseci), smatra se mrtvorodenim. Ne registruje se kao rođenje izbacivanje mrtvog ploda koji je bio nošen manje od 28 sedmica. Za prikupljanje statistickih podataka o živorodenoj i mrtvorodenoj djeci služi statisticki listić o rođenju.

U statistici je jedinica promatranja umrlih svako umrlo lice. Za prikupljanje podataka o umrlim licima služi statisticki listić o slucaju smrti. Umrlo je svako živorodeno lice kod kojeg je nastupio trajni prestanak svih vitalnih funkcija koje zapocinju rođenjem bez mogućnosti ponovnog oživljavanja. Ovdje nisu ukljuceni mrtvorodeni. Umrlo dojenčadi smatraju se djeca koja su umrla prije navršene prve godine života.

Kod statistike skopljenih brakova jedinica promatranja je svaki zakonito skopljeni brak, a kod statistike razvoda svaki brak koji je pravosnažnom presudom nadležnog suda razveden, poništen, odnosno proglašen nevažecim. Za prikupljanje podataka o skopljenim brakovima služi statisticki listić o skopljenom braku, a o razvedenim brakovima statisticki listić o razvedenom braku.

Podaci dani u tabelama su rezultat statistickih istraživanja koja se provode u entiteskim zavodima za statistiku, a dobijeni su na osnovu mjesečnih izvještaja maticara.

Vitalni indeks je odnos između broja živorodenih i broja umrlih.

POPULATION

Notes on Methodology

In this text we present only the definitions for the observation units

Definitions of the observation units

In statistics, the unit of observation of a born person includes both live births and stillborn babies.

A live birth is any child who exhibits signs of life at birth. Live birth is the complete expulsion or extraction from its mother of the product of conception, irrespective of the duration of the pregnancy, which, after such separation, breathes or shows any other evidence of life such as heartbeat, pulsation of the umbilical cord, or definite movements of voluntary muscles, whether or not the umbilical cord has been cut or the placenta detached. If a product of such a birth dies, it is first registered as live-birth and then as dead. For collection of data on live-born and stillborn children a statistical questionnaire about birth is employed.

In statistics, the unit of observation of a dead person is every dead person. For collection of data on dead persons, a statistical questionnaire about death is employed. A dead person is every live-born person in whom there is permanent disappearance of all evidence of life at any time after live birth has taken place, without chance of resuscitation. Stillborn children are not included here. A dead infant is considered to be a child who dies at an age of less than one year.

In statistics regarding marriages, the unit of observation is every legal marriage, and in statistics regarding divorces, every marriage that was divorced, revoked, or proclaimed invalid by a valid decision of the municipal court in charge. For data collection regarding marriages and divorces a statistical questionnaire is employed for each.

Data presented in the tables are gathered by statistical surveys realised in the Institutions for statistics in the entities, collected through monthly reports of registrars.

The vital index is a ratio between live births and death.

NIVO OBRADJE BOSNA I HERCEGOVINA
DATA PROCESSING - LEVEL BOSNIA AND HERZEGOVINA

6 - 1.1 Prirodno kretanje stanovništva po mjesecima

Natural demographic trends

- prethodni podaci / previous dates

Mjesec / Month	Živorodeni / Livebirths	Umrli / Deaths	Prirodni priraštaj / Natural increase ment	Umrli dojencad / Infant deaths	Broj sklopljenih brakova / Number of marriages	Broj razvedeni h brakova / Number of divorces	Vitalni indeks / Vital index
01.04	2.238	2.434	-196	20	1.091	54	0,92
02.04	2.554	2.859	-305	19	1.503	106	0,89
03.04	2.674	2.919	-245	19	1.175	76	0,92
04.04	2.621	2.605	16	21	1.707	91	1,01
05.04	2.718	2.450	268	22	1.780	92	1,11
06.04	2.993	2.530	463	28	1.540	89	1,18
07.04	3.201	2.399	802	17	2.472	74	1,33
08.04	3.075	2.427	648	17	2.809	95	1,27
09.04	3.094	2.374	720	10	2.142	111	1,30
01-09.04	25.168	22.997	2.171	173	16.219	788	1,09

NIVO OBRADJE FEDERACIJA BOSNE I HERCEGOVINE
DATA PROCESSING - LEVEL FEDERATION B&H

6 - 2.1 Prirodno kretanje stanovništva po mjesecima

Natural demographic trends

- prethodni podaci / previous dates

Mjesec / Month	Živorodeni / Livebirths	Umrli / Deaths	Prirodni priraštaj / Natural increase ment	Umrli dojencad / Infant deaths	Broj sklopljenih brakova / Number of marriages	Broj razvedeni h brakova / Number of divorces	Vitalni indeks / Vital index
01.04	1.394	1.243	151	10	636	26	1,12
02.04	1.659	1.591	68	14	944	47	1,04
03.04	1.750	1.676	74	14	805	40	1,04
04.04	1.698	1.480	218	15	1.100	38	1,15
05.04	1.801	1.404	397	14	1.040	48	1,28
06.04	1.965	1.500	465	22	984	30	1,31
07.04	2.024	1.380	644	13	1.617	55	1,47
08.04	1.993	1.386	607	14	1.775	40	1,44
09.04	1.976	1.337	639	7	1.359	50	1,48
01-09.04	16.260	12.997	3.263	123	10.260	374	1,25

6 - 3.1 Prirodno kretanje stanovništva po mjesecima

Natural demographic trends

- prethodni podaci / previous dates

Mjesec / Month	Živorodeni / Livebirths	Umrli / Deaths	Prirodni priraštaj / Natural increasem ent	Umrli dojencad / Infant deaths	Broj sklopljenih brakova / Number of marriages	Broj razvedeni h brakova / Number of divorces	Vitalni indeks / Vital index
01.04	844	1.191	-347	10	455	28	0,71
02.04	895	1.268	-373	5	559	59	0,71
03.04	924	1.243	-319	5	370	36	0,74
04.04	923	1.125	-202	6	607	53	0,82
05.04	917	1.046	-129	8	740	44	0,88
06.04	1.028	1.030	-2	6	556	59	1,00
07.04	1.177	1.019	158	4	855	19	1,16
08.04	1.082	1.041	41	3	1.034	55	1,04
09.04	1.118	1.037	81	3	783	61	1,08
01-09.04	8.908	10.000	-1.092	50	5.959	414	0,89

BHAS
AGENCIJA ZA STATISTIKU BOSNE I HERCEGOVINE
AGENCY FOR STATISTICS OF BOSNIA AND HERZEGOVINA

Trg Bosne i Hercegovine 1

Tel: (387 33) 22 06 22

Faks: (387 33) 22 06 22

e-mail: bhas@bih.net.ba

Web site: www.bhas.ba

U narednim biltenima Agencija za statistiku Bosne i Hercegovine ce publikovati podatke o robnom prometu BiH sa inostranstvom, transportu, šumarstvu, turizmu, industriji, trgovini, gradevinarstvu i ugostiteljstvu.

Next publications will cover data on foreign trade of B&H, transport, forestry, tourism, industry, trade, construction and hotels and restaurants.